

WEATHER

Forecast	Min.	Max.	Prob.
Monday, March 8	14	21	1.85
Tuesday, March 9	14	21	0.00
Wednesday, March 10	14	21	0.00
Thursday, March 11	14	21	0.00
Friday, March 12	14	21	0.00
Saturday, March 13	14	21	0.00
Sunday, March 14	14	21	0.00

The Chelsea Standard

SEVENTY-EIGHTH YEAR—No. 36

14 Pages This Week

CHELSEA, MICHIGAN, THURSDAY, MARCH 10, 1960

10c per Copy

SUBSCRIPTION \$3.00 PER YEAR

QUOTE
They never sought in vain
that sought the Lord aright.
—Burns

ALBER UNOPPOSED FOR VILLAGE PRESIDENT

Plans Progressing Rapidly for Minstrel Show Organization

7-Man Executive Group Headed By Leo Bishop

The committee in charge of preparations for a community minstrel show to be held here next month, announced the following: announcement of the progress of plans for the event.

Your 25th Anniversary Celebration executive committee members had thought that their tenure of office had expired with the passing of 1959, wish to acquaint with the present status of "in the planning" minstrel show.

Considerable preliminary work has been completed and there is a good deal of organizational work to be done before the actual planning and rehearsals of "Chelsea's Oldtime Minstrel Show and Vaudeville Extravaganza" will begin.

A seven-man executive committee has been formed for the show, consisting of Leo Bishop, general chairman; David Strieter, treasurer; J. Mayer, secretary; Robert Daniels, publicity division chairman; "Vince" Burg, program division chairman; Wallace Wood, show division chairman; and Dr. P. E. Sharrard, show division chairman.

Remaining committees, numbering in all, will be filled by the seven now being appointed by the division heads and soon there will be more than 250 people actively working to provide the successful show you have reason to expect.

This show will be sponsored by all of you, the community as a whole, primarily for the purpose of again seeing some of the talent, spirit and general good fellowship of our anniversary activities.

Proceeds from the sale of tickets and above operating costs will be turned over to a local project which will benefit our community and which has not, as yet, been decided.

Your "Chelsea Oldtime Minstrel Show & Vaudeville Extravaganza" (Continued on page eight)

Max Hepburn Elected President Of Rod-Gun Club

Chelsea Rod and Gun club, with 56 members present, held the annual meeting Tuesday evening at the American Legion Home, principal business of the evening being a vote of approval for "construction of a club house on club property."

Officers for the coming year were also elected as follows: Max Hepburn, president; Howard Anderson, first vice-president; John Miller, second vice-president; Paul Morley, secretary; George Dos, treasurer; and Victor Kohsman, Harry Mertens, Ishmael Pickles, and Calvin Summers, Jr., directors.

Others business included adoption of two-by-law changes and announcement of the names of three new members—Wilbur Hindener, Thomas Merkell and Mark Kernan.

The traditional roast beef lunch, marking the final meeting of the club year, was served following the business session.

Young People Observing 4-H Club Week

1,200 young people in Washtenaw county pause this week to observe National 4-H Club week, March 6 to 12. They are the boys and girls enrolled in 4-H Club projects this current year.

National 4-H Club week is designed to acquaint young people and adults with opportunities in 4-H work. Jim Hutchinson, county 4-H extension agent, states that the 4-H Club program is open to all boys and girls, 10 to 21 years old. There are projects which appeal to a variety of interests from gardening and dairy to electricity.

(Continued on page seven)

Bulldogs Lose To Leslie in Tourney Final

Hustling Team Never Gave Up But Couldn't Score When Needed

After winning nine out of their last ten games, the Chelsea Bulldogs were eliminated from State Tournament competition, as the Leslie Blackhawks defeated the Bulldogs, 68-48, last Saturday night to win the District Tournament championship.

Chelsea had advanced to the district finals by defeating Dexter, 64-47, and Stockbridge, 87-43, while Leslie had disposed of Manchester and Pinckney.

A hustling but cold Chelsea team was unable to hit the hoop with any consistency and found themselves missing many easy shots, as well as missing 19 of 39 free throw attempts. Meanwhile, Leslie's fine forward, Jerry Klinger, and 8'5" center, Larry Rouse, were having a good shooting night as they collected 18 and 15 points, respectively.

In the first period of play, the Bulldogs were unable to score a field goal and collected just six free throws, to trail, 13-6.

In the second quarter Leslie and Chelsea both scored 17 points, each team hit on five baskets and seven free throws to leave the floor at half time with Chelsea trailing, 23-30.

The third period found the Bulldogs again unable to hit well, as they were outscored, 16-15.

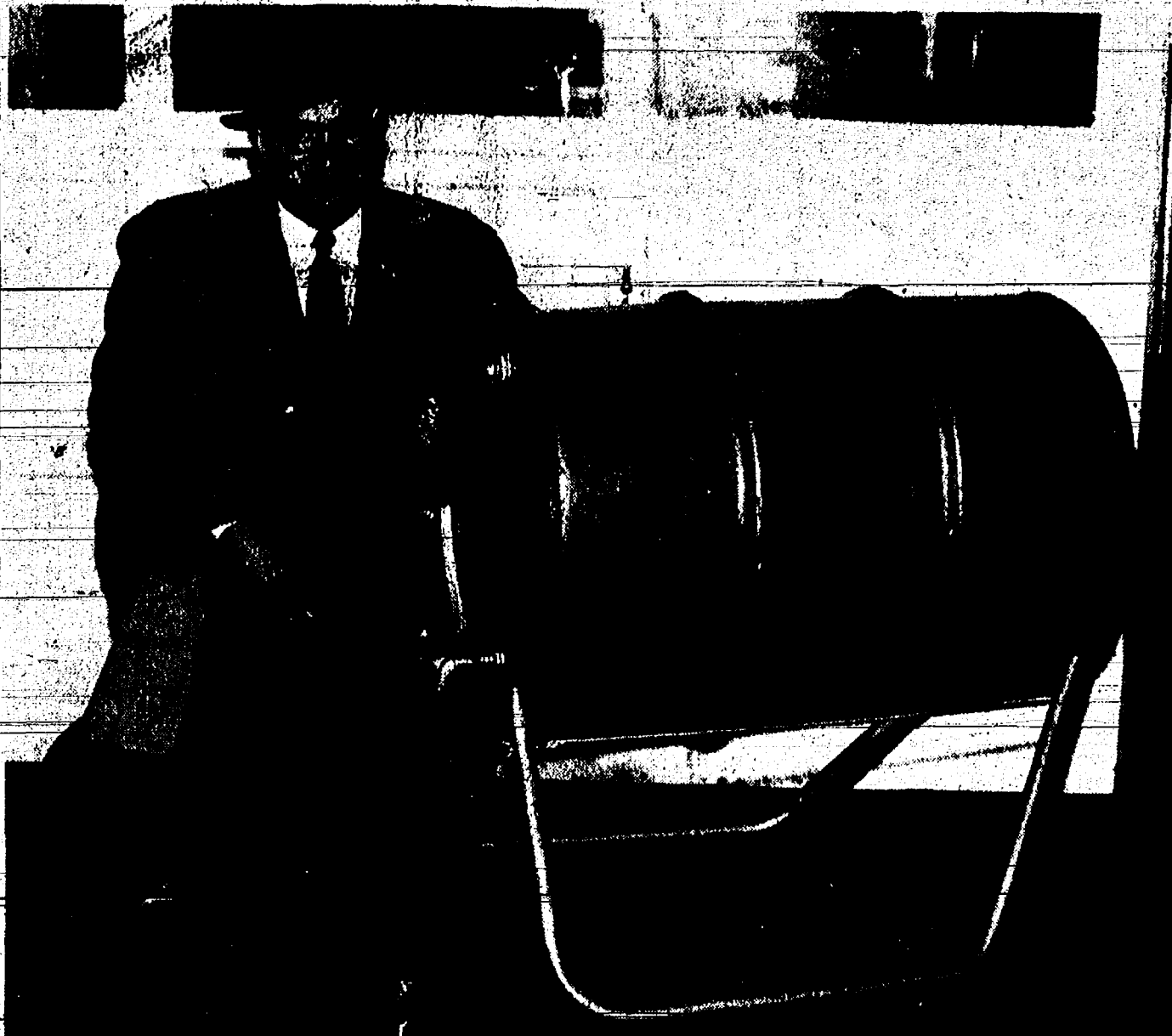
Going into the fourth quarter trailing, 38-46, and victory still within sight, Chelsea pulled to within six points only to see the Blackhawks blister the hoop with 19 points, and put the game well out of reach of the battling Bulldogs, who at no time let up or indicated that they would crack.

The Bulldogs ended their season with a 18-won, 7-lost record. It has been a good season, a season marked with many exciting moments, many joyful hours, and a few heartaches. But most of all, it has been a season with endless demonstrations of desire and determination to win, something we hope these boys will carry with them in this very competitive world in which they are going.

Senior boys who will not be back, come next season, and who have contributed a great deal to the team are Charles Cameron, Dalice Ferris, Matt Murphy, Jack Patrick and George Wilson. Boys who will be back next year are Alton and Homer Nixon, David McLaughlin, Mike Marsh, Ed Lauson, Daryl Keizer, Donald Sexton, Danny Mayer, Charles Koenig, and members of this year's Junior Varsity team.

Scoring for the Leslie game was as follows: Homer Nixon, 18; Jack Patrick, 11; Dave McLaughlin, 9; Dalice Ferris, 8; Alton Nixon, 2; Charles Cameron and George Wilson, each one point.

Scoring for the Stockbridge game was Dave McLaughlin, 13; Jack Patrick, 9; Matt Murphy, 6; Alton Nixon, 8; Homer Nixon, 6; Dalice Ferris, 6; Mike Marsh, 2; Ed Lauson, 2; Donald Sexton, 1; and Larry Cattell, 1.



DEVELOPS NEW PRODUCT—L. E. Riemen-schneider is shown with a simplified barrel stand which he has developed and placed in the hands of patent attorneys. This product was developed to fill the need for a simple, economical, yet rugged barrel stand that may be quickly attached to either a filled or an empty barrel and readily rocked into position to permit easy withdrawal of the barrel's contents. It is constructed of 1 1/4-inch tubing with heavy welded inserts reinforcing the ends. The tubes are notched on either end to accept the rim of a standard 55-gallon steel drum and are securely held in position by 5/16-inch rods fastened with wing nuts. While the product was developed for use by 2-CYCO fuel customers, it is expected that this product will find additional markets in the petroleum, agricultural and industrial fields.

Seeks Third Term In Annual Election To Be Held Monday

24th Birthday Makes E. Chandler 96 Years Old

Edward Chandler, who had been ill the past two weeks, was feeling better on his birthday, Monday, Feb. 29, and a few friends came to help him celebrate the occasion. He was observing his 23rd birthday although he is actually 96 years old. He is spending the winter at the Cavanaugh Lake home of Mrs. Mildred Hopper.

Present for the birthday celebration were Mr. and Mrs. Alfred Lindauer, Mrs. David Mohrlock, Fred Sager, Fred Hoffman and the honor guest's daughter, Mrs. Lyle Haselswerdt.

He was presented with a gift from the group and ice cream and birthday cake was served.

The birthday cake had been baked by Mrs. Mohrlock.

The four men played euchre during the evening and Alfred Lindauer was the prizewinner.

Lively Campaign Develops for 3 Trustee Positions

Donald Alber, People's party candidate for village president, is unopposed in his bid for a third term in Monday's village election. Also unopposed is George L. Winans, Independent party candidate for a second one-year term as village clerk.

Other People's party candidates are Sylvia Ferguson, treasurer; William K. Blaess, John Pierson and Victor Kohsman, trustees for two-year terms; Lynn Kern, assessor; and Dorothy Nielsen and James D. Shadon, library board directors for three-year terms.

In addition to Winans the Independent party candidates are Wallace Wood, treasurer; Donald Baldwin, Harvey Lixey and Stephen Clark, trustees for two-year terms; and Mabel Fox and Maribeth Soule, library board directors for three-year terms.

Blaess, Kohsman and Lixey are incumbent trustees who seek re-election.

Other incumbents up for re-election are Thomas C. Smith, assessor, and Mabel Fox, library board director.

Voting machines will be used for the election which will take place in Sylvan Town Hall. Polls will be open from 7 a.m. until 8 p.m.

Area Boards Of Review Hold Sessions

Boards of review were in session in all area townships one or two days this week and some will meet again next week.

In addition the Chelsea Village Board of Review will be held next Monday and Tuesday in the Municipal building. Hours will be from 9 a.m. until 12 noon and from 1 p.m. until 4 p.m.

Sylvan township Board of Review met at Sylvan Town Hall Tuesday and yesterday and will meet again Monday and Tuesday, March 14 and 15, from 9 a.m. until 12 noon and from 1 p.m. until 4 p.m.

Lyndon township Board of Review met Tuesday, March 8, at Lyndon Town Hall, and will meet again next Tuesday, from 9 a.m. until 4 p.m.

Sharon township held its Board of Review Tuesday, March 8.

Chelsea, Stanton To Trade Mayors

Chelsea and Stanton have been paired for the annual exchange of mayors program which is to be a feature of Government day of Michigan Week, May 15-21.

Government day is scheduled for Monday, May 16.

Following the annual drawing held last month at the new Lansing city hall, the Institute for Community Development and Services at Michigan State University, which handles details of the exchange, sent information to Chelsea's village president, Donald Alber, and to the mayors and village presidents of the state's more than 600 incorporated communities.

Although spring elections may result in personnel changes in the office of mayor or village president in many cities and villages, the Institute is urging all governing bodies to contact the community select a student mayor or village president to welcome the visiting chief executive and be with him throughout the day; and that communities plan how to hold open house in all government buildings to show off their fire departments, police departments, public works facilities and get all citizens better acquainted with the many services they receive from their tax dollars.

This has been the customary procedure in Chelsea during past exchange-of-mayors day programs and definite plans will be made by the Village Council following next week's election.

Stanton, with a population of approximately 1100 is located 40 or 80 miles northeast of Grand Rapids.

Other area cities and villages are paired as follows: Ann Arbor—Marlette; Ypsilanti—Standish; Stockbridge—Otsville; Grass Lake—Port Austin; and Manchester—Carson City; Dexter—Grandville.

Fire Department Called for Garage Blaze

Chelsea firemen were called out late Saturday night when the roof of a small unoccupied cement block building at 13652 Old US-12, east, was discovered to be on fire. The roof was destroyed.

The property is owned by Freeman G. Butler of Roscommon.

Mrs. Earl Willis is a patient at the U. of M. Women's hospital at Ann Arbor. Her room number is 329.

Fire Department Called for Garage Blaze



MYSTERY FARM NO. 89—Is this another area farm that has been in one family for many years? This is the 89th in the series of farm photos published each week without identification in The Standard. If you recognize the place please call The Standard office at once, GR 5-3581. The owner is entitled to a free mounted photo of the farm if he calls at The Standard office by Saturday.



OPEN HOUSE—This 1960 model x-ray machine, designed with the latest safety features, is part of the modern equipment in the new office of Dr. Victor R. Hanson on Old US-12, west of M-92. Open house for the public will be held at the new office building from 1:00 until 4:30 p.m. Sunday afternoon. The x-ray machine is at the north side of the building and is to be made available to other physicians of the community who may wish to use it. Patients and patients will not need to go through the main part of the building to reach the x-ray room since it has its own entrance and private patient's dressing room. Also available for use by other doctors is a new EKG machine for electrocardiograms. Patients' gowns, specially designed by Mrs. Hanson, are in grey and yellow, matching the decor of the entire office which features blue, green, grey and yellow throughout. Mrs. Hanson planned and carried out the decoration and layout of the offices. She also decorated a frothy, fully-basinet in mint green with touches of yellow, where babies may be placed while their mothers are in the x-ray office for check-up. Outer construction of the new building is of cedar block and cedar. Slocum Contractors were the builders.

Co-Operative Nursery Plans Possible Second Session for Next Year

As a result of interest displayed by those who attended a Chelsea Co-Operative Nursery open house two weeks ago, plans are being formulated for a possible second session of the nursery classes to accommodate additional members.

Mrs. David Sanborn, membership and orientation chairman for the nursery, said yesterday that parents who would like to enroll their children for the 1960 fall semester should contact her at once since it is desirable that the children be registered during the spring semester. This would provide an opportunity for the children to visit the nursery and become oriented to nursery procedure while it is still in session.

The nursery is located in the former Beach rural school on Chelsea-Dexter road.

Mrs. Sanborn may be contacted by telephone at her home.

Honored at Open House

Michael Foster, home on leave from the U. S. Navy for 10 days, left early this morning to report to his ship, the USS Intrepid, at Norfolk Va. His parents, Mr. and Mrs. Dudley Foster, held open house for relatives in his honor Sunday afternoon.

School Bands Rated High In Festival

Chelsea Junior High school band received an "excellent" or second place rating in Saturday's district band festival, held at Chelsea High school. No first place, or "superior" ratings were awarded to any of the bands which participated.

Chelsea High school's senior band received a third place "good" rating.

Listed by the judges as the Chelsea Junior band's strong points were spirit, discipline, attitude, training, restraint in playing, good beginning, instrumentation and good tone.

One of the judges gave his impression of the Chelsea Junior High band as follows: "Fine musicianship and phrasing; good tone quality and melody instruments."

Another judge, commenting on the Chelsea Junior High group, said "This is a fine young group which will develop into a fine band. I have enjoyed hearing them. There were numerous times when it sounded like a first division group."

Ratings are determined by average concert performance and sight reading.

"Excellent" ratings (second place) were won by Senior High bands of Saline, Huron, Lincoln, Okemos and Manchester high schools and by Junior High bands of Chelsea and Saline.

Third place, with a "good" rating, went to Chelsea, Clarencerville, Schafer and Summerfield Senior High bands and Manchester and Fellsouth Junior High bands.

"Fair" ratings (fourth place) went to Dexter and Willow Run Senior High schools and Clara Ford Junior High school.

Judges gave as their opinion of Chelsea High's Senior band: training, appearance, spirit, discipline, horn section; balance, blend and rhythmic stability.

Chelsea High's weak points were listed as intonation, inner parts, low brass sound, woodwind and technique.

Clarencerville and Ida school bands did not participate as scheduled. Because of the deep snow, the buses did not make the trip. People who worked as volunteers in the school cafeteria throughout the day included Mrs. Carl Sanderson, Mrs. C. Clark, Mrs. Arnold Lehman, Mrs. Dean Hopburn, Mrs. Herman Ashley, Mrs. George Frisinger, Mrs. Virginia Settz, Mrs. Francis Smyser, Mrs. Elgin Wilson, Mrs. Carl Schwiager, Mr. and Mrs. Robert Harris, Mr. and Mrs. Elwyn Beach, Mrs. Vernon Parks, Mrs. Curtis Farley, Mrs. Harold Brooks, Mrs. W. Hanson and Mrs. Dale Smith.

Also on duty was Mrs. Lucille Olson, school cafeteria director. Gayle Groves, instrumental music director in Chelsea schools, said the entire festival was carried out as planned beforehand.

Dairy Dinner Set March 20 At Chelsea

Washtenaw county's outstanding dairy farmers will be honored at the annual Dairy Banquet to be held Saturday, March 10 at Chelsea High school.

Certificates of Merit will be awarded to farmers who qualify for five-year production averages of over 400 and 500 lbs. of butterfat. Recognition will be given to those who produce over 400 lbs. of butterfat on a one-year average, as well as owners of cows which have a life production of more than 100,000 lbs. of milk.

The 1960 Dairy Princess will be crowned at the banquet. This contest is open to all unmarried girls between the ages of 16 and 26 with a dairy farm background. Girls eligible and wanting to enter this contest should contact Ernest Girbach, Don Johnson or their 4-H club leader.

"The Sharp Keepers" 1957 Michigan Barber Shop Quartet Championships will be on hand to entertain. This event is sponsored by the Washtenaw County Dairy Council which is made up of the dairy organizations and processors throughout the county. The objectives of the council are to coordinate and promote the activities relating to the dairy industry of the county.

Norman Randall, President of the Dairy Council urges everyone to get tickets as early as possible. Tickets are available from all council members.

Ralph Guenther was in Saginaw from Sunday through Tuesday attending the Michigan Professional Photographers Association meeting.

WHO KNOWS?

1. What outstanding war event took place on Aug. 14, 1945?
2. What four nations signed the "Charter of Quito"?
3. Name the capital of Ecuador?
4. A Presidential candidate must be at least—what—to qualify?
5. How was Puerto Rico secured by the U. S.?
6. In what country was Catherine the Great born?
7. Police in what countries carry no guns?
8. What is the average size of the American women's shoes?
9. Can you name three of the largest islands of the Philippines?
10. Who was the Republican Party's first presidential candidate? (Answers on page five)

News Briefs . . .

HOT MONEY!

Miami, Fla.—Hot money put Dewitt Addison in the Miami jail. He tried to exchange \$280 in scotch bills at a bank in suburban Coral Gables. Police arrested him and charged him with the robbery of a Vero Beach supermarket.

SUNK!

Jacksonville, Fla.—Whoever stole that 16-foot aluminum canoe from the front yard of Mrs. Ralph Y. Smith had better watch out. She says it has a hole in the bottom patched with a piece of adhesive tape.

County-Wide Chest X-Ray Program Set

Intensified tuberculosis case-finding will begin Tuesday, March 15, when a two week chest x-ray survey of Washtenaw county communities starts. Dr. Otto K. Engelke, Washtenaw County Health Department director, has announced that four x-ray units from the Michigan Department of Health will be made available to the local health department for nine days each to x-ray people without charge in all sections of the county.

These units have visited the county regularly since 1935 to offer x-rays to all those individuals who will take the time to stop by the registration booth and complete a registration card. The unit will be in the vicinity of the Municipal building in Chelsea from 1 p.m. until 8 p.m., Thursday, March 17, and from 10 a.m. until 6 p.m. Friday, March 18.

The unit will be at Broad and Main street in Dexter from 2 p.m. until 8 p.m. Thursday, March 24 and from 10 a.m. until 6 p.m. Friday, March 25.

Each year, more new cases of tuberculosis are discovered through chest x-ray surveys. Nearly all of these persons are unaware of the fact that they are infected. Cases found during surveys are nearly always in the early stages and, therefore, respond better to treatment, it was said.

X-ray units, such as will be in the area, can take more than 100 x-ray films per hour, eliminating waiting periods for the x-ray. Dr. Engelke reminded residents also that there is no unnecessary radiation, that reports are mailed directly to the person having the x-ray and to the family doctor named by him to receive the report of the x-ray.

X-rays will be taken at Manchester, Monday and Tuesday, March 21 and 22. On Monday the unit will operate from noon until 6 p.m. and on Tuesday it will operate from noon until 8 p.m. It will be located at the Main Street bridge.

News Briefs . . .

Winston Salem, N.C.—Detective Sgt. E. I. Weatherman and W. S. Sumrutt left their patrol car unattended for 30 minutes while they conducted an investigation. When they returned, they attempted to reach headquarters. They couldn't. Someone had stolen the microphone.

CAREFUL THIEF—A methodical and careful thief was caught in the act of unscrewing the hinges on the back door of an El Paso restaurant, police reported. They identified the man as Camacho Reyes and charged him with attempted burglary.

FALSE ALARM—The burglar alarm in the Jewel House of the Tower of London—home of the crown jewels—rang out recently. Five police cars raced through the tower gates. The troop of guards unlimbered their rifles. All gates were closed and locked. It was a false alarm, caused by an electrical short circuit.

VOTE INDEPENDENT



HARVEY LIXEY
For Trustee

Lives at 719 South Main Street, is married and the father of 4 children. He graduated from Chelsea High School and served in the U. S. Army in World War II. He is employed of Federal Screw Works. He is president of UAW-CIO Local 437, president of the Holy Name Society of St. Mary's Church, and a member of the Knights of Columbus. He is presently a trustee on the Council and has served on the following committees: curb and sidewalk, light and water, sewer and budget. Harvey is actively seeking re-election to the Council.

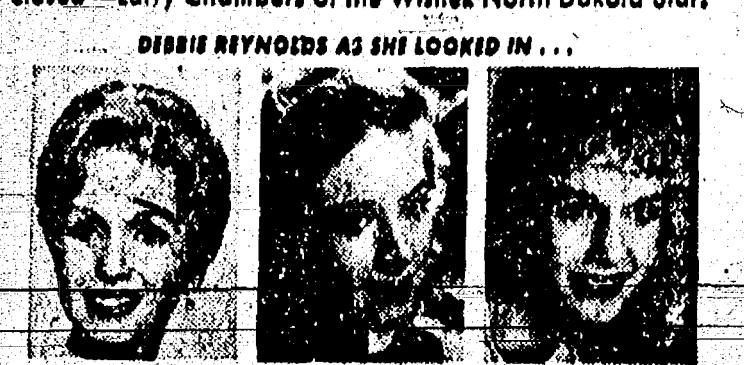
Vote Independent Ticket
at Village Election
Monday, March 14

Clipboard
by JOANNE WALTERS
special correspondent
seventeen MAGAZINE

ELVIS PRESLEY due home—you know when—wants to play only straight roles . . . MAY BRITT and GARDNER McKay will go strong . . . ANNETTE LON her lawsuit against WALT DISNEY

VIC DAMONE's prowling around Hollywood guessing who has the curliest hair . . . Nothing at all between TUESDAY WELD and "Sugarfoot" WILL TUCHINS . . . JANET LEIGH and TONY CURTIS to Italy for three months . . . My five month old "mystery picture" contest is over—LUCY VILHAUER of Lodi, California won herself \$20 by naming DEBBIE REYNOLDS as the girl in the middle, \$10 goes to the editor of the paper she enclosed—Larry Chambers of the Wishek North Dakota Star.

DEBBIE REYNOLDS AS SHE LOOKED IN . . .



Whatever became of EDD BYRNES?—Told you . . . ROCK HUDSON really miffed at not being able to co-star with MARLYN MONROE . . . LIZ TAYLOR's recent bout with pneumonia was pretty serious . . . DEBBIE and GLENN FORD's romance is strictly for the typewriters . . . Bet you didn't know that MERLE JOHNSON's screen name "TROY DONAHUE" came from the same terrible brain that gave us "TAB" and "ROCK" . . . GARY CROSBY and NANCY SINATRA a big item—both Dads approve. See you next month!

The NATIONAL OUTLOOK
By RALPH ROBEY

★ Problem of Economic Growth

Everyone agrees that it would be desirable for this country to grow more rapidly in so far as production is concerned. Unfortunately the desire for more rapid growth and the realization of that desire are quite different matters.

Among the reasons for wanting more rapid growth are that it would help us before the rest of the world, that Russia is growing more rapidly than we are, and that if we are to take care of our projected population growth and continue to improve our standard of living, we have to step up our output per capita, as well as in the aggregate.

Each of these three reasons deserves careful consideration. Strongest Nation

As to the first, there is no question that economically we today are by far the strongest nation in the world. No other country comes even close to equalling our output of goods and services. This is good, but it may not be good enough. We are in the midst of not only a cold war, but also an economic and ideological war. The statement is being made day after day, and more or less from one end of the world to the other, that individual enterprise cannot produce as effectively, or as efficiently, as a centrally planned and directed economy. Perhaps not many persons living in this nation believe that, but a distressing number in foreign lands are questioning this. To convince this questioning multitude it is necessary for us to do better.

On the basis of all the statistics that are available it is clear that Russia is currently growing more rapidly than the United States. Of course Russian statistics have to be taken with a grain of salt. But even allowing for this, there obviously is no room for complacency. Neither does it help to rationalize the difference by saying that Russia is a relatively undeveloped country and in consequence is operating from a low

BOTTLED and HEATING GAS SERVICE

More than 3,600 lbs. extra milk per lactation . . . 38% over previous production. These results at General Mills FACT FARM, U.S.A., show how much the Larro SUREMILK program can boost the milk production of an average dairy cow.

Our complete dairy feeds made with Larro SUREMILK concentrate give your herd the same balanced nutrition. Ask us for details.

NOW! Special 2-bag guarantee
Just use 2 bags of Larro SUREMILK concentrate to mix a dairy feed for one of your cows. Then if you're not satisfied send your sales slip with a letter to General Mills, Inc., Dairy Feed Dept., Minneapolis 26, Minnesota and the cost of the Larro SUREMILK concentrate will be refunded.

Larro SUREMILK program produces up to 38% more milk than ordinary feeding methods

9,637 LBS. OF MILK

13,332 LBS. OF MILK

Larro SUREMILK program produces up to 38% more milk than ordinary feeding methods

More than 3,600 lbs. extra milk per lactation . . . 38% over previous production. These results at General Mills FACT FARM, U.S.A., show how much the Larro SUREMILK program can boost the milk production of an average dairy cow.

Our complete dairy feeds made with Larro SUREMILK concentrate give your herd the same balanced nutrition. Ask us for details.

NOW! Special 2-bag guarantee
Just use 2 bags of Larro SUREMILK concentrate to mix a dairy feed for one of your cows. Then if you're not satisfied send your sales slip with a letter to General Mills, Inc., Dairy Feed Dept., Minneapolis 26, Minnesota and the cost of the Larro SUREMILK concentrate will be refunded.

Blaess Elevator Co.
PHONE GR 9-6511
Four Mills Lake Chelsea, Mich.

United Lenten Services Held Wednesdays

The Rev. S. D. Kinde, pastor of the First Methodist church, was the speaker for the united community Lenten service held last night at the Methodist Home Chapel. The service was in charge of St. Barnabas Episcopal church, with the Rev. Allan Reed presiding.

The Rev. Kinde's sermon topic was "My Christian Faith—and Great Living," and he used as his text the 24th verse of the second chapter of Peter I, in the revised standard version of the Bible, "Christ also suffered for you, leaving you an example that you should follow in his steps."

The speaker explained that Jesus, hanging upon the cross, had nothing left but his faith—his unquenchable belief that the hand of God was in all that could happen to him. This faith strengthened and sustained him.

Faith had made him a great man throughout his life; it would now keep him in the hour of greatest trial.

Brought out also by the Rev. Kinde was the fact that the disciples learned, through daily experience, that faith in God gives people hope, peace of mind and the challenge of a great cause to live for. He said the centuries have verified the truth that to be rich, alone, or to be politically powerful, or both, are not the makings of true greatness; that humbleness of heart, faith in God and a life of service for others make for living at its best.

The Rev. Kinde summed up his sermon by saying that Christians, with their faith strong, are able to face any cross given them for the day, knowing that God takes even the evil to contribute to the good in carrying out His will in the world. He concluded with a verse from a familiar hymn:

"Must Jesus bear the cross alone
And all the world go free?
No, there's a cross for everyone
And there's a cross for me."

The March 10 united service is to be held at the Congregational church and the Rev. E. J. Weiss, Superintendent of the Methodist Home will be the speaker.

CAUGHT BY PRIVATE METER
Capital policemen usually do not ticket congressmen when they park illegally on official business. So Representative Stratton (R-N.Y.) figured he was safe when he parked by a meter at the railroad station and caught a train for a speaking engagement. But the meter was not a "public meter" it was a private meter on private property. When Stratton returned, the proprietor handed him a bill for \$112.40—a dime for each of 112 half-hours.

Stratton has protested to the District of Columbia government. But, since he parked on private property, there seems little the city officials can do.

THUMB BITER
Tyler, Tex.—A woman, who bit off a liquor control agent's thumb during a liquor raid on her house, has been ordered to pay him \$500 damages. Mrs. Lillie Reed must pay \$40 a month to Ralph Poland or spend three years in prison.

can, or would be, maintained year after year.

Our problem is to get faster growth while maintaining our freedom. There are certain policies which would assure this, next week we shall outline some of the more important of these policies.

Farmers May Redeem Grains On Price Support

With maturity dates approaching for a number of grains which are under price support in this area, Mrs. Carolyn Stump of the Washtenaw County Agricultural Stabilization and Conservation office today reminded farmers that they should be alert to market prices that will enable them to redeem their grain at a profit.

Mrs. Stump pointed out that under new legislation, effective first with last year's crops, so-called "equity" payments are no longer made in connection with the take-over of commodities pledged as collateral for price support loans. For crops earlier than 1958, equity payments were made when the market price of a commodity under price support was above the loan plus charges.

While equity payments will not be made, producers may continue to obtain any equity they may have in loan collateral by repaying the loan before maturity, then regaining full ownership of the commodity for whatever disposition they may choose to make.

"Farmers who follow increases in local grain prices in this program as it was intended," Mrs. Stump said. "The price support rate puts a floor under prices and offers price protection at harvest time. If prices rise to a point where farmers can sell on the open market and still repay their

loans plus interest with a profit it is better for them to do so rather than deliver their grain to the government, which already holds large stocks."

Bible Verse To Study

"Therefore, now a man end ways and your doing, and the voice of the Lord, your God."

1. Who was the author of above warning?
2. What was his position?
3. By what nickname was known among his people?
4. Where may this verse be found?

(Answers on page three)

The happiness of married life depends upon making small sacrifices with readiness and cheerfulness.—John Selden.

SERTA
Smooth
Top
Mattresses
\$36.00
MEABON'S

If You Plan To Build or Remodel Your Home Call Us for . . .

FREE ESTIMATES OR BIDS

PLUMBING, WIRING and HEATING

All Work Guaranteed with 1 Year Free Service
WE SELL FOR LESS - WE WILL SAVE YOU MONEY
Hours: Daily, 8-5:30; Thursday, 8-12; Friday, 8 a.m. to 8 p.m.
EMERGENCY SERVICE CALLS: GR 5-8175

HILLTOP PLUMBING, HEATING & ELECTRICAL CONTRACTORS

201 SOUTH MAIN STREET
Chelsea, Mich.
Phone GR 5-7201

MORE than just a furnace . . .

GASAVER

in mild weather, just half the GASAVER burner jets supply plenty of heat . . . in cold weather, all jets burn. No overheating, no fuel waste. Burners today for the money-saving details.

your **WILLIAMSON** dealer

JOHN W. STEELE
SHEET METAL
521 Garfield Chelsea, Mich. Ph. GR 9-4451

From Planning to Living!
BUILDING? REPAIRING? RENOVATING?
Springtime starts your plans rolling . . . brings dreams of a better home nearer.

Take Home and Study Our
HOUSE PLAN BOOKS
These books include hundreds of plans to choose from. We have them for you to use . . . without obligation.

Open - 7:30 a.m. to 5:30 p.m.

Finkbeiner Lumber Co.
Phone GR 9-3881
On Old US-12 Just off S. Main St.

MARTIN STEINBACH, OWNER

We'll put "wings" on your car
You'll think your car has sprouted wings, the way it responds after filling up with our new PURE gas.
You'll like the way the pop, power and performance steps up when you fill up with PURE Gas and Oil. Our batteries will assure you quick starts, too!

PURE OIL PRODUCTS
HANKERD'S SERVICE
TIRES — BATTERIES — TUNE-UPS — BRAKE SERVICE
Phone GR 5-7411
Chelsea, Mich.

FINE FAITH WATCHES
They are all that the name "FAITH" implies. Accurate timepieces of fine quality and modern design at very moderate prices. We are glad to show them. A signed guarantee with every "FAITH" watch.

Walter F. Kantlehner
JEWELER and OPTOMETRIST
"Where Gems and Gold Are Fairly Sold"
102 East Middle Street Phone GR 9-6721

Hot water, and plenty of it, right around the clock. Do the dishes, a week's laundry, bathe the whole brood and there's still oceans of hot water on tap when you need it. Replace now with a thrifty, speedy gas water heater that operates at one low rate 24 hours a day. There's a size and model to keep up with your family's needs

At your Gas Company or dealer showroom

So much more for so much less—
GAS naturally
MICHIGAN CONSOLIDATED GAS COMPANY

The Way the Ball Bounces

With Tom Johnston

All-Area Nominations Sought

It is still the busy time of the season for the "T. J." and "T. J." have run into some fellow players already thinking about the season. I'm still waiting to hear from the South Lyon High, Clinton, South Lyon, Willow Run, along with Ann Arbor, still remain in contention for high, still remain in contention for regional titles, and so we will be covering and broadcasting games.

After this week-end, there will be a team from this area that will be able to follow. I figure it will be University High. It has been looking very good in their recent outings, and have the depth which is so needed to take the tournament. Chelsea just looked against Leslie in the Chelsea district final. The Bulldogs had toughest possible late season game, and with an important performance for them twice a week through the Leslie game, they were all of the credit they can for the police and ability which show. Coach Bob Taylor in eyes did a fine job with his

water's quip: "I showed much movement at the end of the game and looked like a different man than the one we had watched in the season. Tom Walsh

Big Ten Drops

Rose Bowl Pact...

Big Ten Conference officials met at Columbus, O., this past week. One item on the agenda was the Rose Bowl contract. As expected, the proposal ended in a five-year deadlock, thus killing the 14-year old pact with Pacific Coast schools. But the item that shocked the Collegiate athletic world was the announcement that the Big Ten was pulling out of all post season competition.

MSU, Michigan Drop

Now, let's take a look on the national sports scene. Michigan and Michigan State both finished out their Big Ten basketball seasons Monday night with losses. Indiana defeated Michigan State, 86-80, and Iowa turned back the Wolverines, 68-63.

Michigan State went into the season defending the Big Ten basketball crown but finished way back in 8th place. Michigan, not optimistic at the start of the cage wars, finished last in 10th place. But both teams had players who ranked high in individual scoring. Michigan State's Horace Walker

was the Big Ten's third highest point-getter for the season with 444 points. Michigan's John Tidwell was 5th highest Big Ten scorer with 313 points. And MSU's Lance Olson was 8th highest Big Ten scorer with a 266-point total.

Big Ten Drops

Rose Bowl Pact...

Big Ten Conference officials met at Columbus, O., this past week. One item on the agenda was the Rose Bowl contract. As expected, the proposal ended in a five-year deadlock, thus killing the 14-year old pact with Pacific Coast schools. But the item that shocked the Collegiate athletic world was the announcement that the Big Ten was pulling out of all post season competition.

MSU, Michigan Drop

Now, let's take a look on the national sports scene. Michigan and Michigan State both finished out their Big Ten basketball seasons Monday night with losses. Indiana defeated Michigan State, 86-80, and Iowa turned back the Wolverines, 68-63.

Michigan State went into the season defending the Big Ten basketball crown but finished way back in 8th place. Michigan, not optimistic at the start of the cage wars, finished last in 10th place. But both teams had players who ranked high in individual scoring. Michigan State's Horace Walker

holes... well, that's a different story. It happened in 1942... and on the tough Tam O'Shanter golf course near Chicago.

Most of the spectators were following Byron Nelson, the defending champion in the Tam. Nelson always seemed to play his best golf before a large audience and this time he didn't let the fans down.

After the first eight holes of the third round Lord Byron was under par. The ninth was a long par-five hole. Nelson hit a solid drive... and then followed it with another to put him far down the fairway. His chip shot went dead to the pin and he pushed in an easy putt for a birdie four.

Nelson made the turn and started on the backstretch. The 10th hole was another par five... a good hole for a long hitter like the husky Nelson. The veteran whacked a solid drive down the middle and then looked the situation over.

Nelson decided to use a three-iron... feeling he could get enough distance to land on the green or close to it. It was a shot most golfers dream about... but never come near. The ball sailed straight and low... cleared the bunker and bounced on the green. It rolled to a stop only eight feet from the pin.

Nelson tapped it in for an eagle three.

The 11th hole was a short par-three... the kind professionals usually birdie. Nelson used a six-iron. His shot was high and landed 20 feet from the cup. The ball bounced by the pin... and then spun back. The spin carried it back into the cup for a hole-in-one.

The fans broke into a mighty roar. Some ducked under the restraining ropes and ran up to Nelson, slapping him on the back and pumping his hand. He had shot a birdie... an eagle... and a hole-in-one on consecutive holes. Five under par for three holes.

Nelson shot another birdie on the 18th, and he needed an eight-foot putt on the 18th for another birdie and a course record. There was a \$500 prize for breaking the record.

As Lord Byron lined up the putt, George May, the tournament sponsor, came over and whispered something in his ear. Nelson tapped the ball... and it rolled in an arch toward the hole. It stopped... two inches away. It took another putt to tie the course record of 65.

Later, Nelson was asked what May had whispered. Byron answered, "He offered me \$1,000 if I sunk that putt. Boy, the pressure was just too much."

Carol Heiss Tops

Carol Heiss of New York made it look almost easy as she won her fifth straight world figure skating title.

The blonde gold medal winner of the recent Winter Olympics retained her figure skating championship with a dazzling performance at Vancouver, British Columbia.

Her point total in the world competition was more than at Squaw Valley, and she had to be better too, because the second and third place finishers were at their best.

America's hope for future Olympics—Barbara Roles of Temple City, Calif., was third at Vancouver.

Kentucky Derby...

That time of year is nearing when the sports world eyes Louisville, Ky.

Actually, the Kentucky Derby is still nine weeks off. But Derby talk is starting to fill the air. A total of 142 horses have been nominated for the 98th running on May 7.

The list is longer by a dozen than 1959 and boasts of the eighth largest list in Derby history.

Such top three-year olds as "Bally Ache," "Victoria Park" and "Flow Line," to name a few, are expected to compete in the event. Calumet Farm has nominated seven horses for the Louisville event, the same number as victories Calumet owns in the Derby.

The 92nd running of the Belmont Stakes, the third leg of the triple crown—has drawn one more nomination than the Kentucky Derby.

That event is slated for June 11 at Belmont Park, N. Y.

Champion Lord Byron...

Playing five-under par golf isn't considered an extraordinary feat by today's tournament professionals. On some courses five under par won't even get a golfer in the lead.

But five under par for three

TV TODAY AND TOMORROW

By Rolf Hordester, Feature Editor TV Guide Magazine

LLOYD BRIDGES will be joined in "Valley of Decision," a CBS special March 20, by Diana Van der Vlis, Bibi Osterwald, Cameron Prud'homme and Nancy Wickwire. Peter Lind Hayes and Mary Healy now doing an audition film for their projected Four Star comedy series, Suburbia, about Westchester, N. Y.,... Donna Reed and the family on her ABC show will move into a newer, more luxurious home next fall, evidently to provide new story backgrounds.

Audition film for CBS's projected Defenders now in production with author Reginald Rose on the scene. E. G. Marshall and Robert Reed are featured. ABC scheduled its public affairs show on "Korea, the Forgotten Front" for Tuesday night, March 29 at 10... The Roaring Twenties, new hour-long action-adventure series, will probably go into ABC's Saturday night lineup.

A DOCUMENTARY treatment of how Ed Wynn switched from TV comedy to heavy drama set for Desilu Playhouse April 15. "Titled: Man in the Funny Suit." Wynn's first heavy role was on Playhouse 94. "Requiem for a Heavyweight," and playing themselves on the Desilu show, headed. Ed and son Keenan will be author Rod Serling and producer Ralph Nelson... Alfred Hitchcock Presents moves over to NBC next season after five years on CBS... Chester Morris and Robert Sterling signed as continuing

stars in CBS's projected 601-Park Avenue series, to be produced in New York by Herb Brodtkin. Morris plays a hotel security officer; the hotel... Fannie Flaster appears on The Twentieth Century in April when the show deals with New York's late mayor, Fiorella La Guardia... Joe E. Brown does the commentary on an hour-long Bertram Mills circus special for ABC March 31.

MARIA SCHELL signed for the title role in "Ninotchka," a Special Tonight on ABC April 20... The home life of Bridgette Bardot and her family is the subject of an hour-long special to be taped in Paris by General Artists Corp. The French star and her actor-husband, Jacques Charrier, have okayed the project... John Raitt has completed the test film for his own series, Jim Dandy, which airs soon as an episode of Death Valley Days... "Tennessee Ernie Ford Meets King Arthur" is the title of the April 12 Starline... NBC's Project 20 planning a "Life of Christ" show for next year, which would involve stop-action filming of great paintings. Tonsorial note: Bob (Maynard) Denver loses his beatnik chin-splach in an upcoming episode of Dobie Gillis... Joanna (21 Beacon Street) Barnes is moving to 333 Montgomery, new Screen Gems series.

Standard Want Ads get results!

PERSONALS

Mrs. John Mast of Dexter visited Wednesday afternoon at the home of her sister, Mrs. Christina Nicolai, and her brother, John Bauer, who was celebrating his 87th birthday. Another sister, Mrs. Ricka Clark, is staying at the Nicolai home after returning from an Ann Arbor hospital.

Several members of North Lake Extension club attended the Building and Flower Show in Detroit on Tuesday. Included were Mrs. Lee Ferguson, Mrs. Alvin Lesser, Mrs. Phillip Futscher, Mrs. Homer Stofor, Mrs. Max Kalmbach and Mrs. William Schaules.

It is necessary to be almost a genius to make a good husband—Balzac.

For best keeping quality, notes should be stored in a cool, dark place, according to home economists.

The auto is here to stay, even if many motorists aren't.

KLUMPP BROS. GRAVEL CO.

4950 Loveland Road
Post Office: Grass Lake, Mich.
Phone Chelsea
GR 9-2712 or GR 5-7541
Stones 1 1/2", 1", 3/4", 1/2", 3/8"

CONCRETE SAND
FILL DIRT - TOP DIRT
BULDOZING



Green Stamps help keep MICHIGAN PRICES DOWN!

Like the ads of local merchants that you see in this newspaper, S&H Green Stamps boost business. At the same time they help keep prices down.

Here is why: When a store sells more, it can sell for less, since bigger volume brings lower costs.

Stores that use S&H Green Stamps must sell competitively. Michigan housewives are expert shoppers. They read the ads. They check and compare prices. And they can't be fooled!

Trading stamps are being saved today by two out of three American families—about 35 million in all. And their use is still growing in this and other States.

For the best values, shop at the stores in your community that give S&H Green Stamps.

Since 1898... America's Only Nationwide Stamp Plan

MICHIGAN DIVISION
THE SPERRY AND HUTCHINSON COMPANY
7401 Second Avenue - Detroit, Michigan

SUPER DISCOUNT FURNITURE SALE

We Must Sell Now Due to My Ill Health!

Friday, Saturday, Sunday, March 11-12-13
10 a.m. - 9 p.m.

TERMS: 10% Down, 24 months to pay.

- | | |
|--|--|
| 5-CELL FLASHLIGHT .99c | 5- to 15-CUP COFFEE MAKER...\$8.90 |
| IRONING BOARD PAD & COVER .99c | ASSORTED LAMPS...\$5.95 |
| SHEET BLANKET .99c | 1/4-in. HEAVY DUTY ELECTRIC DRILL \$11.95 |
| 4-PT. HAND SAW .99c | PORTABLE MIXER...\$9.95 |
| WALL CAN OPENER .99c | 3-PC. LUGGAGE...\$11.95 |
| LOOP TWIST RUG .99c | 8-PC. BEDROOM SUITES |
| IRONING BOARD \$5.95 | Include: dresser, mirror, bookcase, bed, chest of drawers, box spring and mattress, 2 lamps. |
| 72"x90" BED BLANKET...\$3.98 | ALL FOR \$139.00 |
| STEAM OR DRY IRON...\$8.90 | 10-Pc. Living Room Suites |
| 4"x12" LINOLEUM...\$3.99 | Include 2-pc. living suite, 2 step tables, 1 coffee table, 2 lamps, 1 4'x6' rug, 2 handsome plaques. |
| PORTABLE SEWING MACHINE...\$49.00 | ALL FOR \$139.00 |
| TEA OR COFFEE TABLE...\$5.95 | 10-PC. BUNK BED SETS |
| BUTTON-FREE MATTRESS OR BOX SPRING \$27.95 | Include 2 twin beds, guard rails, ladder, dresser, mirror, 2 mattresses and springs. |
| TANK VACUUM SWEEPER...\$17.95 | ALL FOR \$119.00 |
| | 9x12 NYLON RUG...\$29.95 |
| | DINETTE SETS...\$36.88 |

Harry's Furniture Store
On US-112 Between Saline and Clinton

VOTE INDEPENDENT



WALLACE WOOD For Treasurer

Born in Wayne, Michigan, Dec. 13, 1916. A graduate of Chelsea High School. Wall is an underwriter for State Farm Mutual Insurance Co. and Branch Manager of the Secretary of State's office. He is a member of the Chelsea Methodist Church, Kiwanis Club, Chelsea Community Fair Association and an associate member of the Chelsea Chamber of Commerce. His Main Street office makes him available at all times for payment of village taxes and other village treasurer's business.

Vote Independent Ticket at Village Election
Monday, March 14

NOTICE KRAFTY PRODUCTS Upholstering Co.

announces their new location
425 N. MAIN ST.
GREGORY, MICH.

Temporary headquarters during construction of our new building, will be in my home at the same address.

Savings up to 40% on rebuilding, restyling and reupholstering furniture.

A SHORT DRIVE TO GREGORY IS A BIG SAVINGS TO YOU!
Phone Alpine 6-2800

Take Time Out for a Milk "Pick-Up"!

When you need new "get-up-and-go"... take a milk break!

When you "raid the ice box" at evening's end, reach first for milk... and pour yourself a glass full of good health!

WEINBERG DAIRY

QUALITY PASTEURIZED DAIRY PRODUCTS

Old US-12 Phone GR 5-5771

SALE OF REGULAR \$1.00

BRACELETS

"THREE ON-THE-ARM"

65¢

A wonderful variety of 48 styles.

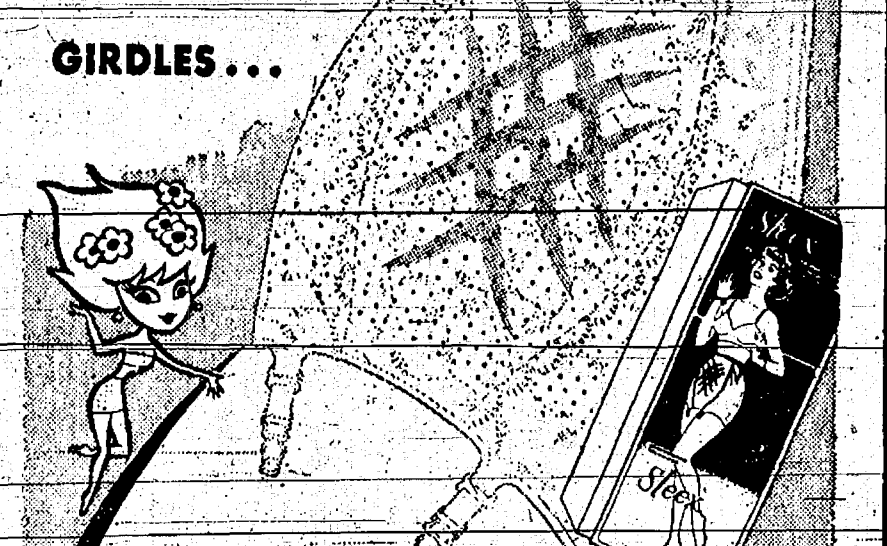
ANDERSON'S

GO GO GO SEE A BIG MOVIE PATRONIZE YOUR LOCAL THEATRE

DON'T CONFUSE BRAND NEW

Sleex

WITH OTHER RUBBER GIRDLES...



Sleex* The only girdle in the world that gives you:

- | | | |
|---|--|---|
| 1 The ORIGINAL downy, soft, cool... cool cotton lining! | 2 Better fit because it's molded to shape... not "dipped"! | 3 22 hidden slimmers for extra figure control |
|---|--|---|
- ...because it's miracle molded of pure Aire-lon* rubber

NEW! Exclusive criss-cross controls hold you... front, back, over hips, 22 hidden controllers firm and flatten, remain invisible!

NEW! Original downy soft, cool cotton lining. Easiest to slip on and off!

NEW! Only SLEEX has stretch strength and slimming power that never washes or wears out!

NEW! Luxurious lingerie look, rich lace pattern. Machine washable. Dries in minutes.

8⁹⁵ 10⁹⁵
(XL \$9.95) (XL \$11.95)

Many New Styles Just Unpacked



MACSHORE CLASSICS

THE PRICELESS LOOK \$3.98

Perfect example of the Priceless Look: MACSHORE'S lovely notched-collar blouse, detailed to look MUCH more expensive! The fine fabric is little or no iron Dacron.

WHITE AND COLORS. 30 TO 38

ANDERSON'S

RENT • SELL • BUY • TRADE • HIRE • SERVICE • WANTED • HELP WANTED • EMPLOYMENT • OPPORTUNITIES

WANT ADS

FARM LOANS!

Buy land, livestock, refinance. Free Appraisals - Fast Service

LAND BANK

ROBERT HALL, MGR.
2921 Jackson Ave.
Ann Arbor, Mich.
Telephone NOrmandy 5-6159

FOR SALE—Entire flock of 85 Blacktop ewes due to lamb April 15. R. J. Glassel, 3429 E. Territorial Rd., Leslie, Phone JU 9-3204.

FOR RENT—4-room brick house, 2 bedrooms. Full basement. Oil heat. All modern. 8 miles north-west of Chelsea. Lake privileges. Call Stockbridge Ulysses 1-4082 after 5 p.m.

DIE MAKERS

DIE TRY-OUT

58-HOUR WEEK

Journymen only, top wages, all benefits, long program.

REPUBLIC DIE & TOOL CO.

45094 Van Born Rd.
Wayne, Mich.

THIRD ANNUAL FISH FRY, St. James Parish Hall, Dexter, March 11, 5 to 7 p.m. Adults \$1.25; children 75 cents; children under 5 free.

FOR SALE—Full-size maple bed. Complete with spring and almost new mattress. Price \$25. Mrs. Willard Guest, Phone GR 5-4382.

REAL ESTATE

FOR SALE

Chelsea Main street business building for rent. Owners will remodel for offices or business to suit.

7-room dwelling on east side of Chelsea. A neat home with basement, gas heat, bath, hardwood floors. Immediate possession.

Modern lake home west of Chelsea. Has large frontage and good beach.

Vacant building site on US-12 east of Chelsea.

130-acre farm. Fine buildings. Level land. Located on paved road.

To inspect these properties call

A. POMMERENING

BROKER

Phone GR 5-5491

SEPTIC TANKS CLEANED \$25.00. Phone HI 9-7771. Wash-tanaw Sanitation Service, Whitmore Lake.

FOR SALE—A large dog house, hand corn sheller, grain bag filler, and chicken brooder. Phone GR 9-7323.

CLOGGED

SEWER

Reynolds Sewer

Service

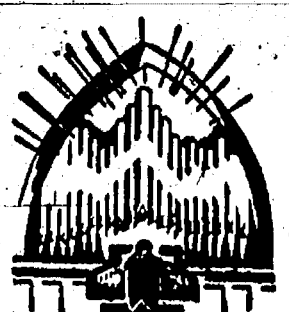
We Clean Sewers Without Digging. Drains Cleaned Electrically. FREE ESTIMATES.

2-YEAR GUARANTEE. Phone Ann Arbor NO 2-5277.

"Sewer Cleaning Is Our Business—Not a sideline!"

GOODWILL OF JACKSON needs appliances of all kinds, furniture, dishes, clothing, papers and magazines if tied in bundles. Call Wesley Morrison 341-4182 for pickup. Truck in Chelsea Tues. day, March 15.

APPLES FOR SALE—Spies, Kings, Jonathans, Bellflowers, Wagner, Steel Reds, Greenings, E. Heininger, 2571 N. Lima Center Rd., Phone GR 9-7610. No Sunday sales.



PEACE and SYMPATHY

... pervades our repose rooms and chapel... music from our organ soft and mellow... our staff kindly, courteous and competent... experienced as funeral directors for three generations.

Staffan Funeral Home

Funeral Directors for Three Generations

124 PARK STREET

WANT ADS

CARPENTER WORK—That attic

can be used for a few dollars. Estimates free. GR 5-8327 after 4.

FOR SALE—Baled hay. First and second cutting. Phone GR 5-5892.

FOR SALE

TRANSPLANTS, Flower and Vegetable Seed. Ready to grow. Just add water.

Arctic Bay Tarpaulls from 5x7 to 12x14. From \$3.95 to \$10.95

Westinghouse Electric Light Bulbs and Fluorescent Tubes in all popular sizes.

Gates Truflex V Belts, from 18 to 90 inch in 1/2" and 3/4" width.

De Con Rat Killer with Durrfin.

Black Flag, with Durrfin.

Fertilize your lawn early. We sell Milorgonite, Vigoro and Sadler's Triple X, 10-6-4.

Fertilizer Spreaders, all sizes from \$5.95 to \$19.50

MERKEL BROS.

FORD TRACTORS and equipment. Also New Holland machinery. Sales and service. Cobb & Schreier, Stockbridge, Phone Ulysses 1-4082.

PLAN TO ATTEND K. of C. annual St. Patrick's Day ham dinner, family style, Sunday, Mar. 20, St. Mary's School Hall, 12-3 p.m. Adults, \$1.50; children, 75 cents. 37

FOR SALE—Full-size maple bed. Complete with spring and almost new mattress. Price \$25. Mrs. Willard Guest, Phone GR 5-4382.

FOR SALE—Full-size maple bed. Complete with spring and almost new mattress. Price \$25. Mrs. Willard Guest, Phone GR 5-4382.

FOR SALE—Full-size maple bed. Complete with spring and almost new mattress. Price \$25. Mrs. Willard Guest, Phone GR 5-4382.

FOR SALE—Full-size maple bed. Complete with spring and almost new mattress. Price \$25. Mrs. Willard Guest, Phone GR 5-4382.

FOR SALE—Full-size maple bed. Complete with spring and almost new mattress. Price \$25. Mrs. Willard Guest, Phone GR 5-4382.

FOR SALE—Full-size maple bed. Complete with spring and almost new mattress. Price \$25. Mrs. Willard Guest, Phone GR 5-4382.

FOR SALE—Full-size maple bed. Complete with spring and almost new mattress. Price \$25. Mrs. Willard Guest, Phone GR 5-4382.

FOR SALE—Full-size maple bed. Complete with spring and almost new mattress. Price \$25. Mrs. Willard Guest, Phone GR 5-4382.

FOR SALE—Full-size maple bed. Complete with spring and almost new mattress. Price \$25. Mrs. Willard Guest, Phone GR 5-4382.

FOR SALE—Full-size maple bed. Complete with spring and almost new mattress. Price \$25. Mrs. Willard Guest, Phone GR 5-4382.

FOR SALE—Full-size maple bed. Complete with spring and almost new mattress. Price \$25. Mrs. Willard Guest, Phone GR 5-4382.

FOR SALE—Full-size maple bed. Complete with spring and almost new mattress. Price \$25. Mrs. Willard Guest, Phone GR 5-4382.

FOR SALE—Full-size maple bed. Complete with spring and almost new mattress. Price \$25. Mrs. Willard Guest, Phone GR 5-4382.

FOR SALE—Full-size maple bed. Complete with spring and almost new mattress. Price \$25. Mrs. Willard Guest, Phone GR 5-4382.

FOR SALE—Full-size maple bed. Complete with spring and almost new mattress. Price \$25. Mrs. Willard Guest, Phone GR 5-4382.

FOR SALE—Full-size maple bed. Complete with spring and almost new mattress. Price \$25. Mrs. Willard Guest, Phone GR 5-4382.

FOR SALE—Full-size maple bed. Complete with spring and almost new mattress. Price \$25. Mrs. Willard Guest, Phone GR 5-4382.

FOR SALE—Full-size maple bed. Complete with spring and almost new mattress. Price \$25. Mrs. Willard Guest, Phone GR 5-4382.

FOR SALE—Full-size maple bed. Complete with spring and almost new mattress. Price \$25. Mrs. Willard Guest, Phone GR 5-4382.

FOR SALE—Full-size maple bed. Complete with spring and almost new mattress. Price \$25. Mrs. Willard Guest, Phone GR 5-4382.

FOR SALE—Full-size maple bed. Complete with spring and almost new mattress. Price \$25. Mrs. Willard Guest, Phone GR 5-4382.

FOR SALE—Full-size maple bed. Complete with spring and almost new mattress. Price \$25. Mrs. Willard Guest, Phone GR 5-4382.

FOR SALE—Full-size maple bed. Complete with spring and almost new mattress. Price \$25. Mrs. Willard Guest, Phone GR 5-4382.

FOR SALE—Full-size maple bed. Complete with spring and almost new mattress. Price \$25. Mrs. Willard Guest, Phone GR 5-4382.

FOR SALE—Full-size maple bed. Complete with spring and almost new mattress. Price \$25. Mrs. Willard Guest, Phone GR 5-4382.

FOR SALE—Full-size maple bed. Complete with spring and almost new mattress. Price \$25. Mrs. Willard Guest, Phone GR 5-4382.

FOR SALE—Full-size maple bed. Complete with spring and almost new mattress. Price \$25. Mrs. Willard Guest, Phone GR 5-4382.

FOR SALE—Full-size maple bed. Complete with spring and almost new mattress. Price \$25. Mrs. Willard Guest, Phone GR 5-4382.

FOR SALE—Full-size maple bed. Complete with spring and almost new mattress. Price \$25. Mrs. Willard Guest, Phone GR 5-4382.

FOR SALE—Full-size maple bed. Complete with spring and almost new mattress. Price \$25. Mrs. Willard Guest, Phone GR 5-4382.

FOR SALE—Full-size maple bed. Complete with spring and almost new mattress. Price \$25. Mrs. Willard Guest, Phone GR 5-4382.

FOR SALE—Full-size maple bed. Complete with spring and almost new mattress. Price \$25. Mrs. Willard Guest, Phone GR 5-4382.

FOR SALE—Full-size maple bed. Complete with spring and almost new mattress. Price \$25. Mrs. Willard Guest, Phone GR 5-4382.

FOR SALE—Full-size maple bed. Complete with spring and almost new mattress. Price \$25. Mrs. Willard Guest, Phone GR 5-4382.

FOR SALE—Full-size maple bed. Complete with spring and almost new mattress. Price \$25. Mrs. Willard Guest, Phone GR 5-4382.

FOR SALE—Full-size maple bed. Complete with spring and almost new mattress. Price \$25. Mrs. Willard Guest, Phone GR 5-4382.

FOR SALE—Full-size maple bed. Complete with spring and almost new mattress. Price \$25. Mrs. Willard Guest, Phone GR 5-4382.

FOR SALE—Full-size maple bed. Complete with spring and almost new mattress. Price \$25. Mrs. Willard Guest, Phone GR 5-4382.

FOR SALE—Full-size maple bed. Complete with spring and almost new mattress. Price \$25. Mrs. Willard Guest, Phone GR 5-4382.

FOR SALE—Full-size maple bed. Complete with spring and almost new mattress. Price \$25. Mrs. Willard Guest, Phone GR 5-4382.

FOR SALE—Full-size maple bed. Complete with spring and almost new mattress. Price \$25. Mrs. Willard Guest, Phone GR 5-4382.

FOR SALE—Full-size maple bed. Complete with spring and almost new mattress. Price \$25. Mrs. Willard Guest, Phone GR 5-4382.

FOR SALE—Full-size maple bed. Complete with spring and almost new mattress. Price \$25. Mrs. Willard Guest, Phone GR 5-4382.

FOR SALE—Full-size maple bed. Complete with spring and almost new mattress. Price \$25. Mrs. Willard Guest, Phone GR 5-4382.

FOR SALE—Full-size maple bed. Complete with spring and almost new mattress. Price \$25. Mrs. Willard Guest, Phone GR 5-4382.

FOR SALE—Full-size maple bed. Complete with spring and almost new mattress. Price \$25. Mrs. Willard Guest, Phone GR 5-4382.

FOR SALE—Full-size maple bed. Complete with spring and almost new mattress. Price \$25. Mrs. Willard Guest, Phone GR 5-4382.

FOR SALE—Full-size maple bed. Complete with spring and almost new mattress. Price \$25. Mrs. Willard Guest, Phone GR 5-4382.

FOR SALE—Full-size maple bed. Complete with spring and almost new mattress. Price \$25. Mrs. Willard Guest, Phone GR 5-4382.

FOR SALE—Full-size maple bed. Complete with spring and almost new mattress. Price \$25. Mrs. Willard Guest, Phone GR 5-4382.

FOR SALE—Full-size maple bed. Complete with spring and almost new mattress. Price \$25. Mrs. Willard Guest, Phone GR 5-4382.

WANT ADS

TOP BARGAINS

IN USED CARS

1955 FORD 2-Dr. Auto. trans., 6 cylinder. One owner.

1958 CHEVROLET. A beautiful 2-tone bronze finish, 6 cylinder, standard shift. One owner.

1959 ENGLISH FORD. 4 passenger, 40 miles per gallon. In excellent condition.

1955 CHEVROLET Station Wagon. 4 Dr. Spasenger. V-8 engine, standard transmission.

1955 CHEVROLET Bel Air Hrd. Top. Turq. and ivory 2-tone. All the extras.

1953 COUNTRY SQUIRE 9-passenger wagon. A real family car.

Palmer Motor Sales, INC.

Phone GR 5-9271

Washenaw County's Oldest Ford Dealer - Since 1911

WANTED TO RENT in Chelsea, a 3-bedroom house. Phone Dexter HA 6-5552.

FOR RENT—3-room furnished apartment. Heat furnished. TV antenna. Adults only. Phone GR 5-6891.

FOR KIWANIS RUMMAGE SALE pick-up phone GR 5-6851. GR 5-5511; GR 9-2892 or GR 9-4121.

FOR KIWANIS RUMMAGE SALE pick-up phone GR 5-6851. GR 5-5511; GR 9-2892 or GR 9-4121.

FOR KIWANIS RUMMAGE SALE pick-up phone GR 5-6851. GR 5-5511; GR 9-2892 or GR 9-4121.

FOR KIWANIS RUMMAGE SALE pick-up phone GR 5-6851. GR 5-5511; GR 9-2892 or GR 9-4121.

FOR KIWANIS RUMMAGE SALE pick-up phone GR 5-6851. GR 5-5511; GR 9-2892 or GR 9-4121.

FOR KIWANIS RUMMAGE SALE pick-up phone GR 5-6851. GR 5-5511; GR 9-2892 or GR 9-4121.

FOR KIWANIS RUMMAGE SALE pick-up phone GR 5-6851. GR 5-5511; GR 9-2892 or GR 9-4121.

FOR KIWANIS RUMMAGE SALE pick-up phone GR 5-6851. GR 5-5511; GR 9-2892 or GR 9-4121.

FOR KIWANIS RUMMAGE SALE pick-up phone GR 5-6851. GR 5-5511; GR 9-2892 or GR 9-4121.

FOR KIWANIS RUMMAGE SALE pick-up phone GR 5-6851. GR 5-5511; GR 9-2892 or GR 9-4121.

FOR KIWANIS RUMMAGE SALE pick-up phone GR 5-6851. GR 5-5511; GR 9-2892 or GR 9-4121.

FOR KIWANIS RUMMAGE SALE pick-up phone GR 5-6851. GR 5-5511; GR 9-2892 or GR 9-4121.

FOR KIWANIS RUMMAGE SALE pick-up phone GR 5-6851. GR 5-5511; GR 9-2892 or GR 9-4121.

FOR KIWANIS RUMMAGE SALE pick-up phone GR 5-6851. GR 5-5511; GR 9-2892 or GR 9-4121.

FOR KIWANIS RUMMAGE SALE pick-up phone GR 5-6851. GR 5-5511; GR 9-2892 or GR 9-4121.

FOR KIWANIS RUMMAGE SALE pick-up phone GR 5-6851. GR 5-5511; GR 9-2892 or GR 9-4121.

FOR KIWANIS RUMMAGE SALE pick-up phone GR 5-6851. GR 5-5511; GR 9-2892 or GR 9-4121.

FOR KIWANIS RUMMAGE SALE pick-up phone GR 5-6851. GR 5-5511; GR 9-2892 or GR 9-4121.

FOR KIWANIS RUMMAGE SALE pick-up phone GR 5-6851. GR 5-5511; GR 9-2892 or GR 9-4121.

FOR KIWANIS RUMMAGE SALE pick-up phone GR 5-6851. GR 5-5511; GR 9-2892 or GR 9-4121.

FOR KIWANIS RUMMAGE SALE pick-up phone GR 5-6851. GR 5-5511; GR 9-2892 or GR 9-4121.

FOR KIWANIS RUMMAGE SALE pick-up phone GR 5-6851. GR 5-5511; GR 9-2892 or GR 9-4121.

FOR KIWANIS RUMMAGE SALE pick-up phone GR 5-6851. GR 5-5511; GR 9-2892 or GR 9-4121.

FOR KIWANIS RUMMAGE SALE pick-up phone GR 5-6851. GR 5-5511; GR 9-2892 or GR 9-4121.

FOR KIWANIS RUMMAGE SALE pick-up phone GR 5-6851. GR 5-5511; GR 9-2892 or GR 9-4121.

FOR KIWANIS RUMMAGE SALE pick-up phone GR 5-6851. GR 5-5511; GR 9-2892 or GR 9-4121.

FOR KIWANIS RUMMAGE SALE pick-up phone GR 5-6851. GR 5-5511; GR 9-2892 or GR 9-4121.

FOR KIWANIS RUMMAGE SALE pick-up phone GR 5-6851. GR 5-5511; GR 9-2892 or GR 9-4121.

FOR KIWANIS RUMMAGE SALE pick-up phone GR 5-6851. GR 5-5511; GR 9-2892 or GR 9-4121.

FOR KIWANIS RUMMAGE SALE pick-up phone GR 5-6851. GR 5-5511; GR 9-2892 or GR 9-4121.

FOR KIWANIS RUMMAGE SALE pick-up phone GR 5-6851. GR 5-5511; GR 9-2892 or GR 9-4121.

FOR KIWANIS RUMMAGE SALE pick-up phone GR 5-6851. GR 5-5511; GR 9-2892 or GR 9-4121.

FOR KIWANIS RUMMAGE SALE pick-up phone GR 5-6851. GR 5-5511; GR 9-2892 or GR 9-4121.

FOR KIWANIS RUMMAGE SALE pick-up phone GR 5-6851. GR 5-5511; GR 9-2892 or GR 9-4121.

FOR KIWANIS RUMMAGE SALE pick-up phone GR 5-6851. GR 5-5511; GR 9-2892 or GR 9-4121.

FOR KIWANIS RUMMAGE SALE pick-up phone GR 5-6851. GR 5-5511; GR 9-2892 or GR 9-4121.

FOR KIWANIS RUMMAGE SALE pick-up phone GR 5-6851. GR 5-5511; GR 9-2892 or GR 9-4121.

FOR KIWANIS RUMMAGE SALE pick-up phone GR 5-6851. GR 5-5511; GR 9-2892 or GR 9-4121.

FOR KIWANIS RUMMAGE SALE pick-up phone GR 5-6851. GR 5-5511; GR 9-2892 or GR 9-4121.

FOR KIWANIS RUMMAGE SALE pick-up phone GR 5-6851. GR 5-5511; GR 9-2892 or GR 9-4121.

FOR KIWANIS RUMMAGE SALE pick-up phone GR 5-6851. GR 5-5511; GR 9-2892 or GR 9-4121.

FOR KIWANIS RUMMAGE SALE pick-up phone GR 5-6851. GR 5-5511; GR 9-2892 or GR 9-4121.

FOR KIWANIS RUMMAGE SALE pick-up phone GR 5-6851. GR 5-5511; GR 9-2892 or GR 9-4121.

FOR KIWANIS RUMMAGE SALE pick-up phone GR 5-6851. GR 5-5511; GR 9-2892 or GR 9-4121.

FOR KIWANIS RUMMAGE SALE pick-up phone GR 5-6851. GR 5-5511; GR 9-2892 or GR 9-4121.

FOR KIWANIS RUMMAGE SALE pick-up phone GR 5-6851. GR 5-5511; GR 9-2892 or GR 9-4121.

FOR KIWANIS RUMMAGE SALE pick-up phone GR 5-6851. GR 5-5511; GR 9-2892 or GR 9-4121.

FOR KIWANIS RUMMAGE SALE pick-up phone GR 5-6851. GR 5-5511; GR 9-2892 or GR 9-4121.

FOR KIWANIS RUMMAGE SALE pick-up phone GR 5-6851. GR 5-5511; GR 9-2892 or GR 9-4121.

FOR KIWANIS RUMMAGE SALE pick-up phone GR 5-6851. GR 5-5511; GR 9-2892 or GR 9-4121.

FOR KIWANIS RUMMAGE SALE pick-up phone GR 5-6851. GR 5-5511; GR 9-2892 or GR 9-4121.

FOR KIWANIS RUMMAGE SALE pick-up phone GR 5-6851. GR 5-5511; GR 9-2892 or GR 9-4121.

FOR KIWANIS RUMMAGE SALE pick-up phone GR 5-6851. GR 5-5511; GR 9-2892 or GR 9-4121.



"Hey! The Browns got

FURNACE DUST FILTERS

20x20x1 — 16x20x1
20x25x1 — 16x25x1

80¢ each

W. E. FARRELL
SHEET METAL

INDUSTRIAL AND GENERAL SHEET METAL WORK

115 WEST MIDDLE STREET—CHELSEA

PHONE Greenwood 9-2011

STANDARD ADS ARE A GOOD SHOPPING GUIDE

Rural Correspondence

• Items of Interest About People You Know •

NORTH FRANCISCO

Mrs. Chester Notten accompanied Mr. and Mrs. Truman Lehman to Jackson Sunday afternoon to visit their brother, Ralph Kalmbach, who returned home last week after being a patient at Foote hospital. Mr. and Mrs. Clarence Lehman were Sunday afternoon callers of Mrs. Ione Moschel and Mrs. Laura Reithmiller of Waterloo.

Jimmy Strobel and girl friend of Jackson, were Sunday visitors of Mr. and Mrs. Clarence Lehman. Mr. and Mrs. Emil Thomas of Ann Arbor were Wednesday eve-

ning guests of her mother, Mrs. E. T. Quist.

Mr. and Mrs. Rudolph Rohde and family called on his uncle, Walter Niebling, at St. Joseph Mercy hospital, Ann Arbor, Sunday afternoon.

Mrs. Nina Wahl entertained her children and their families at a chicken dinner on Sunday, the occasion celebrating the birthdays of five members of the family.

Carol Clark was a Saturday night guest of her grandmother, Mrs. Nina Wahl.

Harley Loveland and grandson, Stephanie, called on the former's

mother, Mrs. Leonard Loveland

last Wednesday.

Mr. and Mrs. Roy Miller were Wednesday evening dinner guests of Mr. and Mrs. T. G. Riemschneider. The dinner was in honor of Mr. Riemschneider's birthday.

Mr. and Mrs. Ben Wilke of Ann Arbor visited Mr. and Mrs. John Hartman Sunday afternoon.

Gib Main returned to St. Joseph Mercy hospital, Ann Arbor Tuesday.

FOUR MILE LAKE

Mr. and Mrs. David Elkins of Chelsea were Saturday evening visitors of Mr. and Mrs. Merritt Honbaum.

Mr. and Mrs. Floyd Fowler and son, Richard, and Mr. and Mrs. Earle Pettibone spent Sunday in Farmington and visited Mr. and Mrs. Roy Pettibone.

Mrs. William Wierich spent Sunday visiting her mother, Mrs. Mary Reames of Gregory.

Mr. and Mrs. Gary Wright and family, of Chelsea, were Sunday dinner guests of her parents, Mr. and Mrs. Burton Wright and family.

Mrs. John Fischer, Mr. and Mrs. Harvey Fischer and son, Marvin, were Sunday afternoon visitors of their daughter, Mrs. Jerry Kelley and family, of Wayne. They also called on Mr. and Mrs. David Fischer and family, of Hamburg.

Mr. and Mrs. Jerold Heydauff and family, and Mr. and Mrs. William Rudolph, of Michigan Center, were Sunday dinner guests of Mrs. Heydauff's parents, Mr. and Mrs. Conrad Turner, of Dexter. It was a birthday anniversary honoring Mr. Turner.

Mr. and Mrs. Thomas Masterson attended the Builders and Flower Show in Detroit a week ago Monday.

Mr. and Mrs. Reamph Hadley

(Political Advertisement)

VOTE INDEPENDENT

Agents are rich! Phil Kellogg bought David Niven's Pacific Palisades home for \$100,000. David kept two acres on which he'll build a new one.

Anna Kashfi is about to sign to make a picture in Italy. She'll try to take her son along. Marlon Brando will battle her every step of the way.

Today's Picture Review:

THE BRAMBLE BUSH

"The Bramble Bush" is a sort of "Peyton Place" type of thing, with plenty of controversial subjects raised in it, including the issue of "mercy" killing.

The scene is a New England coastal town where a youngish man is slowly and painfully dying of Hodgkins' disease. He has sent for his best friend, a doctor, to attend him during his ordeal.

It is a very reluctant homecoming for the doctor, who has reason to hate the town with a passion. The dying man has a very beautiful wife, and before you can say "Jack Robinson," the doctor has fallen for her, but hard. The natural course of events follows, with inevitable complications, and the doctor, torn by remorse for his behavior, and the agony of watching his good friend suffer, decides to give in to his patient's own request to end his life. An overdose of morphine does the trick, and when this becomes known, the doctor goes on trial for murder.

The principals are Richard Burton as the doctor, Barbara Rush as the wife, Angie Dickinson as the nurse who is secretly in love with the doctor, Jack Carson as the lawyer, Henry Jones as the newsman, and Tom Drake as the dying man.

Vote Independent Ticket at Village Election Monday, March 14

LOOK! LOOK! LOOK!

AUCTION

FRIDAY, MARCH 11, 7 p.m.

LOCATION: On US-112 Between Saline and Clinton at HARRY'S AUCTION

This is our second auction for 1960 due to illness. Overloaded. Must sell. All new merchandise. Buy at lowest prices ever.

TERMS: 10% Down, 24 months to pay

FURNITURE

Living Room Suites
3-Piece Sectionals
Bedroom Suites
7-Piece Dinettes
Recliners
Occasional Chairs
Mattresses
Box Springs
Hollywood Beds
Step Tables
Chests of Drawers
9'x12' Rugs
Linoleum
Lamps
TV Sets
Hi-Fi Sets

DRY GOODS

Bed Sheets
Bedspreads
Pillow Cases
Towels
Blankets

APPLIANCES

Washers and Dryers
Electric and Gas Stoves
Refrigerators
Automatic Toasters
Electric Skillets
Coffee Makers

TOOLS

Saws
Drills
Hand Tools

1001 OTHER ITEMS — COME ONE — COME ALL!

H & L Brennan, Distributors, Inc.

1001 OTHER ITEMS — COME ONE — COME ALL!

H & L Brennan, Distributors, Inc.

1001 OTHER ITEMS — COME ONE — COME ALL!

H & L Brennan, Distributors, Inc.

1001 OTHER ITEMS — COME ONE — COME ALL!

H & L Brennan, Distributors, Inc.

1001 OTHER ITEMS — COME ONE — COME ALL!

H & L Brennan, Distributors, Inc.

1001 OTHER ITEMS — COME ONE — COME ALL!

H & L Brennan, Distributors, Inc.

1001 OTHER ITEMS — COME ONE — COME ALL!

H & L Brennan, Distributors, Inc.

1001 OTHER ITEMS — COME ONE — COME ALL!

H & L Brennan, Distributors, Inc.

1001 OTHER ITEMS — COME ONE — COME ALL!

H & L Brennan, Distributors, Inc.

1001 OTHER ITEMS — COME ONE — COME ALL!

H & L Brennan, Distributors, Inc.

1001 OTHER ITEMS — COME ONE — COME ALL!

H & L Brennan, Distributors, Inc.

1001 OTHER ITEMS — COME ONE — COME ALL!

H & L Brennan, Distributors, Inc.

1001 OTHER ITEMS — COME ONE — COME ALL!

H & L Brennan, Distributors, Inc.

1001 OTHER ITEMS — COME ONE — COME ALL!

H & L Brennan, Distributors, Inc.

1001 OTHER ITEMS — COME ONE — COME ALL!

H & L Brennan, Distributors, Inc.

1001 OTHER ITEMS — COME ONE — COME ALL!

H & L Brennan, Distributors, Inc.

1001 OTHER ITEMS — COME ONE — COME ALL!

H & L Brennan, Distributors, Inc.

'60 MERCURY

now priced \$31 under Ford Galaxie*

'60 MERCURY

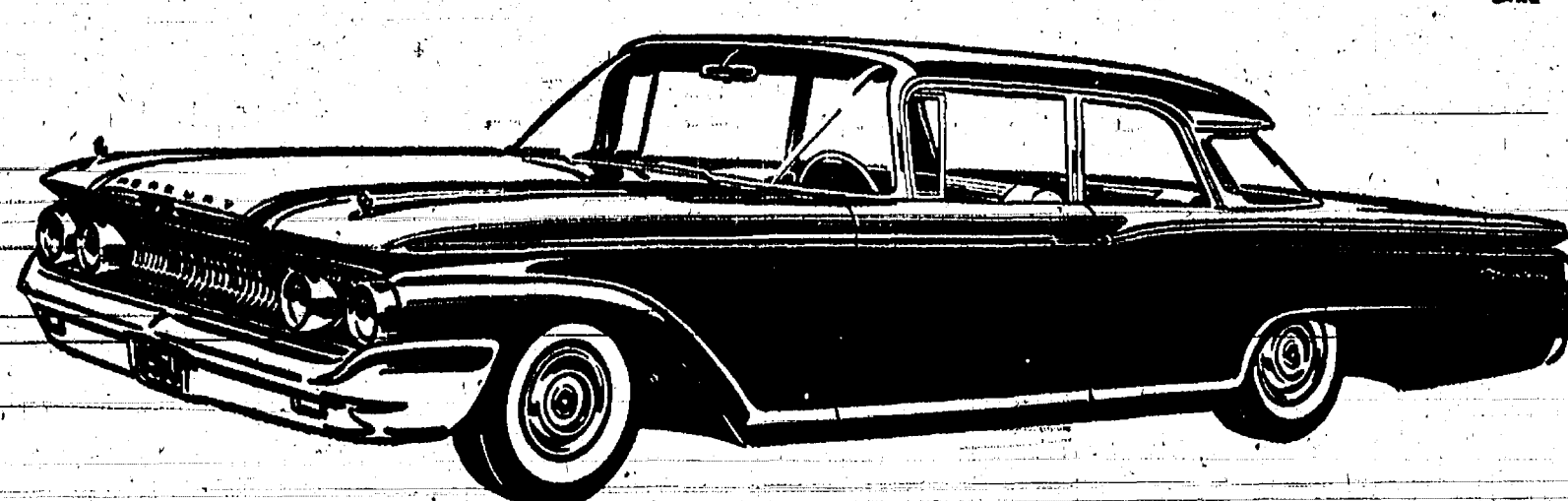
now priced \$66 under Chevrolet Impala*

'60 MERCURY

now priced \$63 under Plymouth Fury*

'60 MERCURY

now priced as America's Best Buy



*Label price of Mercury Monterey vs. lowest-priced competitive V-8 sedan models, plus transportation charges and local sales tax. Get in and get our deal—today!

SEE YOUR LOCAL MERCURY DEALER

CHELSEA IMPLEMENT COMPANY, INC.

3231 Manchester Road

Chelsea, Michigan

mother, Mrs. Leonard Loveland

last Wednesday.

Mr. and Mrs. Roy Miller were Wednesday evening dinner guests of Mr. and Mrs. T. G. Riemschneider. The dinner was in honor of Mr. Riemschneider's birthday.

Mr. and Mrs. Ben Wilke of Ann Arbor visited Mr. and Mrs. John Hartman Sunday afternoon.

Gib Main returned to St. Joseph Mercy hospital, Ann Arbor Tuesday.

FOUR MILE LAKE

Mr. and Mrs. David Elkins of Chelsea were Saturday evening visitors of Mr. and Mrs. Merritt Honbaum.

Mr. and Mrs. Floyd Fowler and son, Richard, and Mr. and Mrs. Earle Pettibone spent Sunday in Farmington and visited Mr. and Mrs. Roy Pettibone.

Mrs. William Wierich spent Sunday visiting her mother, Mrs. Mary Reames of Gregory.

Mr. and Mrs. Gary Wright and family, of Chelsea, were Sunday dinner guests of her parents, Mr. and Mrs. Burton Wright and family.

Mrs. John Fischer, Mr. and Mrs. Harvey Fischer and son, Marvin, were Sunday afternoon visitors of their daughter, Mrs. Jerry Kelley and family, of Wayne. They also called on Mr. and Mrs. David Fischer and family, of Hamburg.

Mr. and Mrs. Jerold Heydauff and family, and Mr. and Mrs. William Rudolph, of Michigan Center, were Sunday dinner guests of Mrs. Heydauff's parents, Mr. and Mrs. Conrad Turner, of Dexter. It was a birthday anniversary honoring Mr. Turner.

Mr. and Mrs. Thomas Masterson attended the Builders and Flower Show in Detroit a week ago Monday.

Mr. and Mrs. Reamph Hadley

(Political Advertisement)

VOTE INDEPENDENT

Agents are rich! Phil Kellogg bought David Niven's Pacific Palisades home for \$100,000. David kept two acres on which he'll build a new one.

Anna Kashfi is about to sign to make a picture in Italy. She'll try to take her son along. Marlon Brando will battle her every step of the way.

Today's Picture Review:

THE BRAMBLE BUSH

"The Bramble Bush" is a sort of "Peyton Place" type of thing, with plenty of controversial subjects raised in it, including the issue of "mercy" killing.

The scene is a New England coastal town where a youngish man is slowly and painfully dying of Hodgkins' disease. He has sent for his best friend, a doctor, to attend him during his ordeal.

It is a very reluctant homecoming for the doctor, who has reason to hate the town with a passion. The dying man has a very beautiful wife, and before you can say "Jack Robinson," the doctor has fallen for her, but hard. The natural course of events follows, with inevitable complications, and the doctor, torn by remorse for his behavior, and the agony of watching his good friend suffer, decides to give in to his patient's own request to end his life. An overdose of morphine does the trick, and when this becomes known, the doctor goes on trial for murder.

The principals are Richard Burton as the doctor, Barbara Rush as the wife, Angie Dickinson as the nurse who is secretly in love with the doctor, Jack Carson as the lawyer, Henry Jones as the newsman, and Tom Drake as the dying man.

Vote Independent Ticket at Village Election Monday, March 14

LOOK! LOOK! LOOK!

AUCTION

FRIDAY, MARCH 11, 7 p.m.

LOCATION: On US-112 Between Saline and Clinton at HARRY'S AUCTION

This is our second auction for 1960 due to illness. Overloaded. Must sell. All new merchandise. Buy at lowest prices ever.

TERMS: 10% Down, 24 months to pay

FURNITURE

Living Room Suites
3-Piece Sectionals
Bedroom Suites
7-Piece Dinettes
Recliners
Occasional Chairs
Mattresses
Box Springs
Hollywood Beds
Step Tables
Chests of Drawers
9'x12' Rugs
Linoleum
Lamps
TV Sets
Hi-Fi Sets

DRY GOODS

Bed Sheets
Bedspreads
Pillow Cases
Towels
Blankets

APPLIANCES

Washers and Dryers
Electric and Gas Stoves
Refrigerators
Automatic Toasters
Electric Skillets
Coffee Makers

TOOLS

Saws
Drills
Hand Tools

1001 OTHER ITEMS — COME ONE — COME ALL!

H & L Brennan, Distributors, Inc.

1001 OTHER ITEMS — COME ONE — COME ALL!

H & L Brennan, Distributors, Inc.

1001 OTHER ITEMS — COME ONE — COME ALL!

H & L Brennan, Distributors, Inc.

1001 OTHER ITEMS — COME ONE — COME ALL!

H & L Brennan, Distributors, Inc.

1001 OTHER ITEMS — COME ONE — COME ALL!

H & L Brennan, Distributors, Inc.

1001 OTHER ITEMS — COME ONE — COME ALL!

H & L Brennan, Distributors, Inc.

1001 OTHER ITEMS — COME ONE — COME ALL!

H & L Brennan, Distributors, Inc.

1001 OTHER ITEMS — COME ONE — COME ALL!

H & L Brennan, Distributors, Inc.

1001 OTHER ITEMS — COME ONE — COME ALL!

H & L Brennan, Distributors, Inc.

1001 OTHER ITEMS — COME ONE — COME ALL!

H & L Brennan, Distributors, Inc.

1001 OTHER ITEMS — COME ONE — COME ALL!

H & L Brennan, Distributors, Inc.

1001 OTHER ITEMS — COME ONE — COME ALL!

H & L Brennan, Distributors, Inc.

1001 OTHER ITEMS — COME ONE — COME ALL!

H & L Brennan, Distributors, Inc.

1001 OTHER ITEMS — COME ONE — COME ALL!

H & L Brennan, Distributors, Inc.

1001 OTHER ITEMS — COME ONE — COME ALL!

H & L Brennan, Distributors, Inc.

1001 OTHER ITEMS — COME ONE — COME ALL!

H & L Brennan, Distributors, Inc.

1001 OTHER ITEMS — COME ONE — COME ALL!

H & L Brennan, Distributors, Inc.

of near Unadilla were Saturday

evening dinner guests of Mr. and Mrs. Laurence Noah and family.

Mrs. Irene Colling and Thomas Colling and children, of Stockbridge, Mr. and Mrs. Eugene Doherty, Mary Jane and Danny, and Margaret Chule were Sunday afternoon callers of Frances and Herbert McIntee.

Mrs. Donna Ramsay of Ann Arbor was a Monday evening dinner guest of Mr. and Mrs. Laurence Noah and family.

WATERLOO

Mr. and Mrs. Theron Foster and daughter and family, Mr. and Mrs. Vern Glenn and children, of Ypsilanti, were Sunday dinner guests at the home of Mr. and Mrs. Will Barber. Mrs. Foster and Mrs. Barber are sisters.

Mr. and Mrs. James Beach of Ypsilanti spent Sunday at the home of Mr. and Mrs. Leigh Beeman.

Mr. and Mrs. Clarence Lehman and Mr. and Mrs. Roland Lehman

Mrs. John Fischer, Mr. and Mrs. Harvey Fischer and son, Marvin, were Sunday afternoon visitors of their daughter, Mrs. Jerry Kelley and family, of Wayne. They also called on Mr. and Mrs. David Fischer and family, of Hamburg.

Mr. and Mrs. Jerold Heydauff and family, and Mr. and Mrs. William Rudolph, of Michigan Center, were Sunday dinner guests of Mrs. Heydauff's parents, Mr. and Mrs. Conrad Turner, of Dexter. It was a birthday anniversary honoring Mr. Turner.

Mr. and Mrs. Thomas Masterson attended the Builders and Flower Show in Detroit a week ago Monday.

Mr. and Mrs. Reamph Hadley

(Political Advertisement)

VOTE INDEPENDENT

Agents are rich! Phil Kellogg bought David Niven's Pacific Palisades home for \$100,000. David kept two acres on which he'll build a new one.

Anna Kashfi is about to sign to make a picture in Italy. She'll try to take her son along. Marlon Brando will battle her every step of the way.

Today's Picture Review:

THE BRAMBLE BUSH

"The Bramble Bush" is a sort of "Peyton Place" type of thing, with plenty of controversial subjects raised in it, including the issue of "mercy" killing.

The scene is a New England coastal town where a youngish man is slowly and painfully dying of Hodgkins' disease. He has sent for his best friend, a doctor, to attend him during his ordeal.

It is a very reluctant homecoming for the doctor, who has reason to hate the town with a passion. The dying man has a very beautiful wife, and before you can say "Jack Robinson," the doctor has fallen for her, but hard. The natural course of events follows, with inevitable complications, and the doctor, torn by remorse for his behavior, and the agony of watching his good friend suffer, decides to give in to his patient's own request to end his life. An overdose of morphine does the trick, and when this becomes known, the doctor goes on trial for murder.

The principals are Richard Burton as the doctor, Barbara Rush as the wife, Angie Dickinson as the nurse who is secretly in love with the doctor, Jack Carson as the lawyer, Henry Jones as the newsman, and Tom Drake as the dying man.

Vote Independent Ticket at Village Election Monday, March 14

LOOK! LOOK! LOOK!

AUCTION

FRIDAY, MARCH 11, 7 p.m.

LOCATION: On US-112 Between Saline and Clinton at HARRY'S AUCTION

This is our second auction for 1960 due to illness. Overloaded. Must sell. All new merchandise. Buy at lowest prices ever.

TERMS: 10% Down, 24 months to pay

FURNITURE

Living Room Suites
3-Piece Sectionals
Bedroom Suites
7-Piece Dinettes
Recliners
Occasional Chairs
Mattresses
Box Springs
Hollywood Beds
Step Tables
Chests of Drawers
9'x12' Rugs
Linoleum
Lamps
TV Sets
Hi-Fi Sets

DRY GOODS

Bed Sheets
Bedspreads
Pillow Cases
Towels
Blankets

APPLIANCES

Washers and Dryers
Electric and Gas Stoves
Refrigerators
Automatic Toasters
Electric Skillets
Coffee Makers

TOOLS

Saws
Drills
Hand Tools

1001 OTHER ITEMS — COME ONE — COME ALL!

H & L Brennan, Distributors, Inc.

1001 OTHER ITEMS — COME ONE — COME ALL!

H & L Brennan, Distributors, Inc.

1001 OTHER ITEMS — COME ONE — COME ALL!

H & L Brennan, Distributors, Inc.

1001 OTHER ITEMS — COME ONE — COME ALL!

H & L Brennan, Distributors, Inc.

1001 OTHER ITEMS — COME ONE — COME ALL!

H & L Brennan, Distributors, Inc.

1001 OTHER ITEMS — COME ONE — COME ALL!

H & L Brennan, Distributors, Inc.

1001 OTHER ITEMS — COME ONE — COME ALL!

H & L Brennan, Distributors, Inc.

1001 OTHER ITEMS — COME ONE — COME ALL!

Club and Social Activities

KINDER KLUB

Kinder Klub, with 18 members and three guests present, held a meeting Tuesday evening at the home of Mrs. George Heydlauff. Her assisting hostesses were Mrs. Arden Musbach and Mrs. Alan Conklin.

Following the business session, James Hein, assistant manager of the Waterloo Recreation Area, showed slide pictures to illustrate a talk on the state park program.

The next regular club meeting will be held March 22 at the home of Mrs. George Winchester.

LIMANEERS

Limaneers, with 12 members present, met Thursday afternoon at the home of Mrs. Harry Pruden.

Assisting hostesses for a noon pot-luck dinner were Mrs. Carl Schlosser and Mrs. John Metzger. During the business session plans were discussed for a St. Patrick's day remembrance for the group's two adopted patients at Ypsilanti State Hospital—a 12-year-old boy and a middle-aged man.

The two had also been remembered for St. Valentine's day. It was reported at Thursday's meeting.

The next Limaneers meeting is scheduled for April 7 at the home of Mrs. Irvin Lousberry.

MODERN MOTHERS

Modern Mothers Child Study club met Tuesday evening with Mrs. William Adams, co-hostess, as Mrs. Paul Kalmbach.

A feature of the roll call period was identification of baby pictures of members' husbands.

The program period at the meeting included a "white elephant" auction with Mrs. Ray Steinbach and Mrs. Philip Vogel serving as auctioneers.

Refreshments were served by the hostess and co-hostess, Mrs. Paul Kalmbach.

The next social meeting will be held March 22 at the home of Mrs. Wilbur Werner while the next business session is scheduled for April 12 and will include election of officers.

The nominating committee includes Mrs. William Wade, Mrs. Donald Bussler and Mrs. Paul Boehler.

Library Volunteers

Volunteer workers in the school libraries include Mrs. Walfrid Impola who spends each Wednesday afternoon at North Elementary school, and Mrs. Bob Fitzsimmons who does typing of book cards and catalogue copy at her home.

North and South Elementary school libraries each have step-up stools now supplied through the efforts of Custodian H. T. Moore.

Fun Night Enjoyed By Members of Woman's Club

Mrs. John Hale, a past president of the Woman's Club of Chelsea, presided at Tuesday's regular meeting which was held at McKune Memorial Library.

During the business session Miss Mabel Fox urged members to write to their representative in Congress asking him to support the proposed bill for school construction and maintenance.

A "fun night" program which followed was in charge of Mrs. Paul Maroney, Mrs. Charles McSweeney and Mrs. George Walworth.

Those who served refreshments were Mrs. Sallie Smith and Miss Nina Belle Wurster.

Mrs. Richard Kern Elected President of Child Study Club

Chelsea Child Study club members at their regular meeting Tuesday evening, discussed two of the club's projects—the March 29 fashion show and the April 30 spring planning meeting in which all Chelsea Child Study clubs are co-operating as the hostess group for club representatives of the entire area.

Mrs. Paul Schable, Jr., reminding members of the fashion show, announced that a dress rehearsal is to be held at 1:30 p.m. Monday, March 28.

Tuesday's meeting was held at the home of Mrs. Theodore Faust with Mrs. Lawrence Dietle and Mrs. John Pilkington as co-hostesses.

Two petitions were discussed at the meeting—one on the subject of a proposed pilot area for the study of mental health of children with a view toward forestalling emotional upsets in adult life, and the other on the subject of the proposed state constitutional convention.

New officers were unanimously elected as follows: Mrs. Richard Kern, president; Mrs. John Pilkington, first vice-president; Mrs. J. R. Seitz, second vice-president; Mrs. J. J. McCarthy, secretary; Mrs. Harold Dove, treasurer; and Mrs. Paul Schable, Jr., auditor.

The next meeting, March 22, has been designated as "Fun with Fun" and will be held at the Junior High school. Members are to wear play clothes to the meeting.

World Day of Prayer Service Attended by 60 Women of Community

A united World Day of Prayer service, held Friday afternoon at St. Barnabas Episcopal church, was attended by approximately 60 women of the community.

An offering of \$46.78 received at the service is being sent to the National Council of Churches headquarters to be used for interdenominational mission work through the Divisions of Home and Foreign Missions.

Principal beneficiaries in the Division of Home Missions are ministries among agricultural migrants, low-income farming communities and American Indians.

The Division of Foreign Missions work includes education for Christian leadership; Christian literature for women and girls; and friendly relations with foreign students.

This year's service, used at gatherings throughout the world and in many different languages, was entitled "Laborers Together with God."

Each year a different group prepares the service and this year it was prepared by the Women's Inter-Church Council of Canada.

Mrs. Robert Harris of the Methodist church acted as reader at the service.

Assisting her as leaders were Mrs. Jeremiah MacDougall, of St. Barnabas church, acting for Mrs. Edmund Kayser; Mrs. Wilbert Grieb of St. Paul's Evangelical and Reformed church; Mrs. Raymond Schairer of the Methodist church; Mrs. Harvey Meppelink of the Assembly of God; and Mrs. Robert Wagner of the Congregational church.

Soloist for the service was Mrs. Fredrick Belser. Accompanied on the organ by Mrs. Judson Goltra, she sang "He Shall Feed His Flock" from Handel's "Messiah".

Ushers for the service were Mrs. George McKelighan and Mrs. Allan Reed, of St. Barnabas church.

Following the service tea was served at the church with Mrs. S. D. Kinde and Mrs. Paul M. Schnake pouring.

The tea table was centered with an attractive arrangement of greens and straw flowers prepared by Mrs. R. K. Taylor.

Mrs. David Colquhoun of St. Barnabas, assisted by Mrs. John Rossiter of Dexter and Mrs. Eugene Garvey was in charge of the tea.

Members of the committee in charge of arrangements for the United World Day of Prayer service here included Mrs. Wilbert Grieb and Mrs. LeRoy Satterthwaite of St. Paul's church; Mrs. Jeremiah MacDougall and Mrs. Judson Goltra of St. Barnabas church; Mrs. Franklin Gee and Mrs. Graham Sprague of the Congregational church; and Mrs. Robert Turner and Mrs. Benjamin Bower of the Methodist church.

Mrs. Brett Schneiders honored Saturday on 25th Anniversary.

Mr. and Mrs. George Brett Schneiders were honored Saturday evening, March 5, when 85 friends arrived to surprise them on their 25th wedding anniversary.

The evening was spent playing cards. Later, refreshments were served, including a three-tiered anniversary cake baked and decorated by Mrs. Duane Landwehr.

Mr. and Mrs. Brett Schneiders were presented with a silver money tree and other gifts.

Mrs. Brett Schneiders is the former Mary Kathryn Visel. She and Mr. Brett Schneiders were married March 5, 1935 at St. Mary's rectory. They have lived since their marriage at their present home at 6120 Sibley Rd.

Guests present for the occasion were from Ann Arbor, South Lyon, Grass Lake and Chelsea.

At an honors convocation last week at St. Mary's College, Notre Dame, Ind., the name of Ellen Keusch of Chelsea, was included on the Dean's List. The distinction was awarded for exceptionally high scholarship during the first semester of the 1959-60 Academic year.

Miss Keusch, valedictorian of the 1959 class at Chelsea High school, is a freshman at St. Mary's Notre Dame.

She is the daughter of Mr. and Mrs. John Keusch, 409 Washington St.

COLONIAL MANOR NURSING HOME 236 East Middle Street PHONE GR 9-1491

Efficient Nursing Care Day and Night IN BEAUTIFUL CHELSEA

BECKER MEMORIALS 6033 Jackson Road ANN ARBOR, MICHIGAN

YOUNG AT HEART Nantucket, Mass.—After 30 years as town assessor, George E. Grimes has announced his candidacy for his 11th three-year term. Grimes doesn't think that he's too old. He is 92.

When there is an income tax, the just man will pay more and the unjust less on the same amount of income.—Plato.

(Political Advertisement)

VOTE INDEPENDENT

MARIBETH SOULE For Library Board

Married and mother of 5 children, lives at 409 Madison Street. Maribeth attended Western Michigan University, is past president of the Kinder Klub and a member of the Methodist Church and the Chelsea Cooperative Nursery.

Vote Independent Ticket at Village Election

Monday, March 14

MPSC Grants Revenue Increase To Telephone Co.

Lansing—The Michigan Public Service Commission has granted Michigan Bell Telephone Co. an increase in revenues approximating \$4 million.

After taxes, the increase will net the company less than \$2 million.

The order is disappointing and discouraging, said William M. Day, president of Michigan Bell.

Although the company has asked the MPSC to use its own discretion in determining the amount of additional revenue needed, the company contended its evidence supported an increase up to \$25 million a year.

The increase will not become effective until specific rates are proposed by the company and approved by the Commission.

Explaining his disappointment over the low increase, Day said: "Our big problem in the last decade of rising costs has been to operate the business at a satisfactory return on investment in a climate of regulation. The price adjustments we have been permitted to make have been too little and too late to resolve the problem. The price of our service will have gone up only about one-third since 1940, while the price of almost everything else has more than doubled."

Day said evidence demonstrated that the company needed up to \$25 million additional revenue "to give the company the financial strength required to render the quality of service demanded and deserved by our customers."

Company plans for the future will have to be reviewed, the telephone company president said, especially its construction program for improvement and expansion of its service.

"All our operations exert a powerful influence on the economy of the state and we are reluctant to make any decision that might curtail that impact," Day said.

One Minute SPORTS QUIZ

1. Who won the recent winter Olympic Games?

2. What countries came in second and third?

3. What country finished fourth?

4. Where are the Chicago White Sox training this spring?

5. In what sport is Jack Fleck well known?

(Answers on page eight)

It is not every calamity that is a curse, and early adversity is often a sharp blessing.—James Sharp.

Ellen Keusch Honored for Scholastic Achievement At St. Mary's College

At an honors convocation last week at St. Mary's College, Notre Dame, Ind., the name of Ellen Keusch of Chelsea, was included on the Dean's List. The distinction was awarded for exceptionally high scholarship during the first semester of the 1959-60 Academic year.

Miss Keusch, valedictorian of the 1959 class at Chelsea High school, is a freshman at St. Mary's Notre Dame.

She is the daughter of Mr. and Mrs. John Keusch, 409 Washington St.

COLONIAL MANOR NURSING HOME 236 East Middle Street PHONE GR 9-1491

Efficient Nursing Care Day and Night IN BEAUTIFUL CHELSEA

BECKER MEMORIALS 6033 Jackson Road ANN ARBOR, MICHIGAN

YOUNG AT HEART Nantucket, Mass.—After 30 years as town assessor, George E. Grimes has announced his candidacy for his 11th three-year term. Grimes doesn't think that he's too old. He is 92.

When there is an income tax, the just man will pay more and the unjust less on the same amount of income.—Plato.

(Political Advertisement)

VOTE INDEPENDENT

MARIBETH SOULE For Library Board

Married and mother of 5 children, lives at 409 Madison Street. Maribeth attended Western Michigan University, is past president of the Kinder Klub and a member of the Methodist Church and the Chelsea Cooperative Nursery.

Vote Independent Ticket at Village Election

Monday, March 14

Girl Scouts Plan Open House Event at Junior High Gym

As one of the principal highlights of Girl Scout Week in Chelsea, area troop members and their leaders will hold open house tomorrow evening, March 11, in the Junior High school gymnasium.

They extend a special invitation to their friends, their families and all people of the community, with fathers of Girl Scouts particularly reminded to attend since the open house and a special program planned for the evening will take the place of the Father and Daughter programs of former years.

As part of the open house a pageant will be presented, beginning at 7:30 p.m.

Written by the girls of Mariner Troop 71 under the supervision of their leader, Mrs. Warren Eisenbeiser, each episode of the pageant will be a demonstration of a service performed in the community by the troop enacting the part.

Marching in the Memorial Day parade will be enacted by the girls of Troop 496 to open the pageant.

The remaining scenes will be as follows: "Girls at Troop Meeting Making Tray Favors," Troop 495; "Scouts Performing Flag Ceremony for Chelsea Kiwanis Club," Troop 149; "Scouts Taking Christmas Gifts to Chelsea Social Service," Troop 148; "Christmas Caroling in the Community," Troop 48; "Making Rhythm Toys for the Nursery School," Troop 77; and "Visiting Girl Scouts Adopted Grandmother at Nursing Home," Troop 49.

The pageant will be concluded by the new prospective Brownie Troop which will give the "Brownie Promise," as Episode No. VIII, followed by Episode No. IX, a tribute to Juliette Gordon Lowe, founder of the Girl Scouts in the United States.

Nine Girl Scouts will take their places on the stage and sing "My Country 'Tis of Thee." As they sing, the Juliette Low fund will be collected.

For this fund, each girl contributes a penny for each year of her age, the money being designated for a central fund which is used to maintain the birthplace of Juliette Low in Savannah, Ga., a beautiful home many Girl Scouts visit each year.

This year, on Oct. 31, marks the 100th anniversary of her birth. Exhibits arranged by the Girl Scouts will be on display before and after the pageant.

Observe 4-H Week . . . (Continued from page one)

trical and handicraft to home improvement and foods. Club meetings also offer an opportunity for members to discuss topics outside their projects. They may choose to study career possibilities or educational opportunities available to them.

Jim Hutchinson extends an invitation to young people and adults to take part in the Washtenaw county 4-H Club program. If you'd like to know more about 4-H work or are interested in organizing a club, just contact 4-H office at the county building.

4-H Clubs in the county are celebrating National 4-H Club week with displays and posters in their communities and a county-wide 4-H party at the Tappan Junior High school in Ann Arbor to end the week on March 12.

Nationally, 4-H Club Week will be highlighted as six outstanding 4-H Club members present the annual 4-H "Report to the Nation" to President Eisenhower in Washington, D. C. One of the six delegates is a girl from Michigan—Janet Long of Milford. She was selected during National Club Congress in Chicago last fall.

Dr. Russell Mawby, state 4-H Club leader, is also a part of the delegation to Washington, representing all of the nation's state 4-H Club leaders.

Twice Slimmed Front and Back in Social Whirl by Warner's

Coming and going, you'll look (and feel) a whole size smaller in your new Social Whirl by Warner's. Five famous circles, embroidered front and back, concentrate slimming power where you need it most—over tummy and derriere. Be twice slimmed in a new, lightweight Social Whirl by Warner's.

Popular High waisted Girdle in power net with down-stretch of satin elastic to sleek hips. (Rayon-Nylon-Rubber-Cotton) White. Sizes 28 to 32.

16.50

High-Waisted Girdle in nylon taffeta with extra hip control from around stretch of marquisette elastic. Panels all-nylon. Elastic: rayon-rubber-polyester, cotton. White, sizes 28-32.

13.50

CORSET SHOP — SECOND FLOOR

Goodyear's ANN ARBOR

STORE HOURS: 9:30 A.M. to 5:30 P.M.

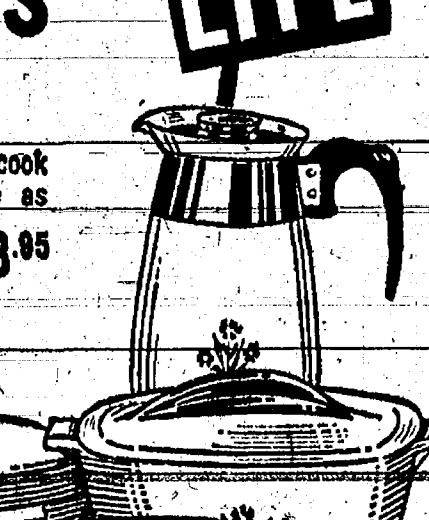
Phone NO 3-4171

Special Offer from

MERKEL'S

TRY CORNING WARE IN YOUR OWN HOME FOR 10 days

World's most beautiful freeze, cook and serve ware for as little as \$3.95



CORNING WARE

1. Corning Ware Percolator 6 cup . . . \$ 9.95	8 cup . . . \$10.95
2. Deluxe skillet with cradle and detachable handle . . . \$12.95	
3. Corning Ware Skillet 7" . . . \$3.95	8" . . . \$ 5.95
10" . . . \$ 8.95	
4. Saucepans 1 qt. . . \$3.95	1 1/2 qt. . . \$ 4.50
2 qt. . . \$ 4.95	2 1/2 qt. . . \$ 6.95

Try it in your home for 10 days. See how easy you can freeze, broil, bake, fry and serve in one beautiful dish. If not completely satisfied, return Corning Ware and full purchase price will be refunded. Guaranteed against breakage from hottest hot . . . coldest cold.

Give beautiful Corning Ware Sets from \$14.95 to \$34.95

MERKEL BROS.

BEAUTIFUL HOME FURNISHINGS

MERKEL BROS. floor fashions

Now on display in our WINDOWS featuring

Armstrong VINYL CORLON

COLORS . . . DESIGNS TO MEET EVERY TASTE AND BUDGET

MERKEL BROS.

Beautiful Home Furnishings



MARIBETH SOULE For Library Board

Married and mother of 5 children, lives at 409 Madison Street. Maribeth attended Western Michigan University, is past president of the Kinder Klub and a member of the Methodist Church and the Chelsea Cooperative Nursery.

Vote Independent Ticket at Village Election

Monday, March 14

WATER REPELLENT SERVICE

Any Outer Wear SNOW SUITS - JACKETS RAIN COATS - TOPCOATS Treated with

REP 100

During March

75¢

plus cleaning charge.

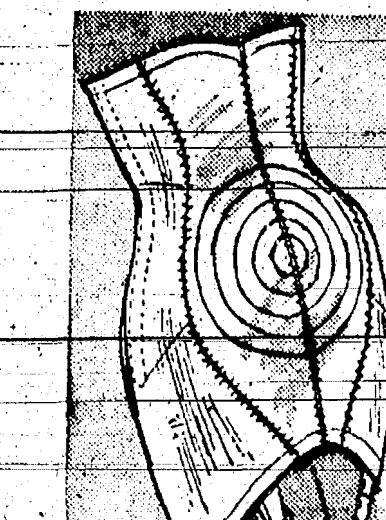
PARKER'S

EXPERIENCED CLEANERS

Phone GR 9-6701 Chelsea 113 Park St.


Twice Slimmed Front and Back in Social Whirl by Warner's

Coming and going, you'll look (and feel) a whole size smaller in your new Social Whirl by Warner's. Five famous circles, embroidered front and back, concentrate slimming power where you need it most—over tummy and derriere. Be twice slimmed in a new, lightweight Social Whirl by Warner's.



Popular High waisted Girdle in power net with down-stretch of satin elastic to sleek hips. (Rayon-Nylon-Rubber-Cotton) White. Sizes 28 to 32.

16.50



High-Waisted Girdle in nylon taffeta with extra hip control from around stretch of marquisette elastic. Panels all-nylon. Elastic: rayon-rubber-polyester, cotton. White, sizes 28-32.

13.50

CORSET SHOP — SECOND FLOOR

Goodyear's

ANN ARBOR

STORE HOURS: 9:30 A.M. to 5:30 P.M.

Phone NO 3-4171

Community Calendar

Friendly club Monday, March 14, at the home of Mrs. Harold Knott. Co-hosts: Mrs. Lucille Olson. Pot-luck supper at 6:30 p.m.

Spaghetti dinner at St. Mary's church hall, Manchester, Thursday, March 17. Serving 5 p.m.-8 p.m. Tickets now available from any member. Price: adults, \$1.25; children under 12, 50 cents. adv.36

Deborah Circle of the Methodist WSCS, Wednesday, March 16, 9 a.m., at the home of Mrs. William Marsh.

Methodist Mr. and Mrs. club bowling at Sylvan Alley Saturday, March 12, 8:30 p.m. Later going to the home of Mr. and Mrs. Dale Smith, 98 Cedar Lake.

Mission Circle of St. Paul's church, Alma Meserve leader, Tuesday, March 15, 7:30 p.m. at the home of Amanda Koch.

Chat 'n' Seau of the Congregational church Tuesday evening, March 15, at the home of Mrs. Harold Knott.

Father & Son banquet of the Sharon EUB church at Rows Corners which was postponed March 3 will be held Thursday, March 10 at 7 p.m.

St. Paul's Good Will and Christian Service circle trip to Detroit Home for Children and Aged Tuesday, March 15. Meet at church 11:15 a.m. Bus leaves 11:30 a.m. For late cancellations call Mrs. Wilbert Grieb or Mrs. Floyd Walz Monday, March 14 so others on waiting list may go.

Jerusalem Farm Bureau Thursday, March 10, 8:30 p.m., at the home of Mr. and Mrs. George Erke.

Special communication, Olive Lodge No. 155, F&AM, Tuesday, March 8, 7:30 p.m. Entered Apprentice degree. Lunch following.

Ruth-Naomi Chapter of the Congregational church, Wednesday, March 9, 9 a.m., at the home of Mrs. Vernon Parks.

Girl Scout Birthday Week open house Friday, March 11, 7:30 p.m., Junior High school gym.

Lima Center Extension club Wednesday, March 9, 10:30 a.m., at Lima Community Hall. Hostess: Mrs. Darwin Downer. Lesson: "The Friendly Cup." Members to bring antique dishware or other old dishes, three cups and a small dish of food to pass.

OES Past Matrons, Wednesday, March 9, at the home of Mrs. Elmer Lindemann, 513 McKinley. Pot-luck dinner, 12:30 p.m.

Chelsea Camera club Monday, March 7, 7:30 p.m., at McKune Memorial Library. President Ralph Frisch will conduct tour of Chelsea-Products photography rooms. Members to bring pictures of sunsets; sleeping animals or people; action or movement.

Afternoon Philathea Circle of Methodist church, Wednesday, March 16 to be held at Methodist Home Chapel, 12:30 luncheon.

Afternoon Philathea Circle guests of Evening Philathea Circle, Tuesday, March 15, 8 p.m. in Methodist church social center.

Chat 'n' Seau Tuesday, March 15, 7:30 p.m., at the home of Mrs. Harold Knott. Co-hosts: Mrs. Otto Lulek.

Sylvan Extension Club Thursday, March 17, at the home of Mrs. Oscar Kalmback, 12 o'clock luncheon. Wrapped "white elephant" sale. Program: Discussion of spring party and program planning for the year.

Fidelity Circle Thursday, March 17, 1:30 p.m. at home of Marjorie Faust. June Burghart, leader.

Willing Workers Circle, Tuesday, March 15, 8 p.m. at home of Joyce Dietle who will also be the leader.

Michigan State Nurses Association, Washtenaw District, Thursday, March 10, 8 p.m., St. Joseph Mercy hospital auditorium, Ann Arbor. Speaker: David H. Kruger, assistant to director, Labor and Industrial Relations Center, MSU. Topic: "The Economic Status of Nurses."

Chelsea-Rebekah Lodge will hold an Easter-Bake Sale April 16. Place and committee to be announced at a later date. adv.36

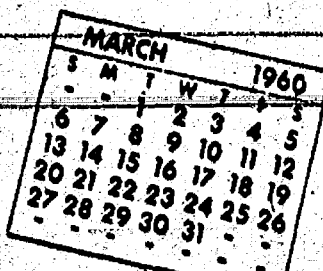
VFW social meeting and guest night, Monday, March 14, 8 p.m., at the home of Mrs. J. A. Keeler. Jackson St. Committee: Mrs. Mac Packard, Mrs. Charles Carly, Mrs. Dore Barker and Mrs. Blanche Barkley.

Sylvan-Lima Farmers' Guild, Monday evening, March 14, at Lima Community Hall.

K. of C. annual family style St. Patrick's Day ham dinner Sunday, March 20, 12:30 p.m., St. Mary's school hall. Adults \$1.50; children 75 cents. adv.37

PNG club Thursday, March 17, 7:30 p.m., at the home of Mrs. Gene Coltre. Co-hostess: Mrs. Ross Munro.

Jerusalem Home Extension club Tuesday, March 15, 8 p.m., at the



MARCH IS YOUTH MONTH—Governor William Milliken hands proclamation designating March, 1960, as Youth Month to Bela Feher of Stephens, Michigan State University sophomore, as Jane Rhoades (far right), Lansing Sexton High school graduate, and Sandra Eiker, Wyandotte, MSU sophomore, watch. The Governor called on all Michigan people to "encourage our young people in their endeavors and to instill in them the principles of good citizenship and patriotism; that they may be spurred to meet the challenge of their times and to work for continued progress of Michigan, our nation, the world, so that all peoples may live in freedom and dignity."

Deadline Set Monday for Fluoride Dental Program

Children who will enter kindergarten this fall and those in the second, fifth and eighth grades whose parents wish them to participate in the fluoride dental decay preventive program this summer should be registered by next Monday, March 14.

School children will receive forms at school for registration, while pre-school children may be registered by calling John Thompson, GR 9-3424, or Mrs. John Chaplin, GR 9-2582.

Fee for the course of treatment is \$3.00.

The topical fluoride program is being offered for administration during summer vacation. It is sponsored by the State and County Department of Health in conjunction with the PTA health committee. The clinic will be held in July, exact dates to be announced later.

The treatment consists of a cleaning of the teeth and four applications of sodium fluoride. Indications are that tooth decay in children is reduced by as much as 40 per cent by the treatment. Treatment should be applied every three years; therefore children in the 2nd, 5th and 8th grades and children who will enter kindergarten this fall should be registered in the program.

Total Eclipse Of Moon Next Sunday

James Hoffmeyer, eighth grade science teacher at Chelsea Junior High school, has called attention to the fact that a total eclipse of the moon will take place during the early morning hours next Sunday.

Hoffmeyer said that while the total eclipse of the moon will last from 2:45 a.m. until 4:15 a.m., the moon itself will be visible as a coppery red orb because some of the sun's rays, refracted around the earth, reach the moon.

The shadow of the earth as it comes between the sun and the moon, will begin to be visible here from 45 minutes to one and one-half hours prior to the total eclipse.

Area residents who get up to see the eclipse Sunday morning will also have the opportunity of viewing five morning stars—Jupiter which rises shortly after 2 a.m.; Mars at 2:30 a.m.; Saturn, shortly after 3 a.m.; and Venus and Mercury. The latter two, however, will be so close to the sun that they will be difficult to distinguish.

Hoffmeyer said that with good field glasses it will be possible to see two or three of the moons around Jupiter.

Minstrel Plans ...

(Continued from page 3)

general chairman, Leo Bishop, has a list of projects already suggested by various townspeople and urges that anyone with a project idea notify him immediately so that all ideas may be given full consideration at the first meeting when there will be a sufficient number of people present to enable your chairman to obtain a representative vote.

The show will be held in Chelsea High school auditorium April 21, 22 and 23, and rehearsals will start immediately after the arrival of your director—Who? Why Jim Egbert of "Remembering When" fame, of course. He will arrive April 9, do the actual casting of the show roles and start getting the show into shape. There will be more than 100 of you men and women, boys and girls in the show and in order to speed casting time we need your immediate help. Will any and all of you please contact Dr. Sharrard, P. F. Niehaus or David Strieter and tell them what you want to do—be in the show, work on a committee, sell tickets, or just plain join in the fun. Give them your name and phone number and say whether you are representing yourself as an individual, or a club group, or maybe even a Brush or Belle chapter.

Lets everyone report in quickly and all get into the act.

Show dates are for the week after Easter and rehearsals will be carefully planned so as not to interfere with Lenten services.

A bank account does not show who is rich or poor—only who has money. People are rich or poor from the inside, not from the outside.

BIRTHS

A daughter, Ann Marie, Friday, March 4, to Mr. and Mrs. Charles H. Burgess, 747 Taylor St.

A daughter, Friday, March 4, to Mr. and Mrs. Dale Gilbert of Pontiac. The baby is a great-granddaughter of Mrs. Adam Alber.

Sports Quiz Answers

1. Russia.
2. Sweden and the United States.
3. Germany (West and East combined).
4. Sarasota, Fla.
5. Golf.

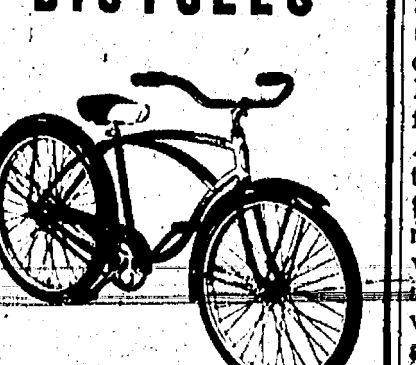
In 1502, on his fourth voyage to the New World, Columbus ran into a hurricane, and lost 20 out of his 30 ships.

NOW ON DISPLAY

NEW 1960 MODELS

Schwinn

BICYCLES



Here's top-flight Schwinn styling at a low, low price. Famous Schwinn Quality construction. Comes in 28, 24 and 20-inch models. SEE IT NOW!

\$37.95 to \$69.95

TERMS - TRADE-INS

MERKEL BROS.

Adult Study Class Being Offered at Methodist Church

The Rev. Louis C. Calster is teaching an adult study class in the social center of the First Methodist church from 8 to 7:30 p.m. each Sunday evening, and all adults interested are invited to attend.

"Luke's Portrait of Christ" is the subject of the series of classes which will continue each Sunday through April 3.

Those who attend are asked to bring a sack lunch. Coffee is furnished.

The planning committee includes Mrs. Robert Harris, Mrs. Loring Bates and Mrs. Raymond Schairer.

Expressway Contract Let

Listed among contracts let March 1 at Lansing by the Michigan State Highway Department is one in the Chelsea area.

The contract is for 2.3 miles of US-12 expressway (Interstate 94) including two structures and service roads, east from the Washtenaw-Jackson county line to the New York Central railroad tracks southwest of Chelsea.

Pierson Contracting Co., of Saginaw, submitted the low bid of \$769,905.

Completion date is June 30, 1961.

Structures in the section include an interchange to carry Kalmbach Rd. over the expressway. It will be 236 feet in length and will carry a 26-foot roadway.

Also included is a grade separation to carry Notten Rd. over the expressway. It will be 211 feet long and will carry a 26-foot roadway.

The contract calls for one new lane to carry east-bound traffic and reconstruction of existing US-12 to carry west-bound traffic.

With this section of US-12 under contract only 26 miles of the 217-mile US-12 expressway will remain to be let—10 miles in Washtenaw county and 16 miles in Berrien county. The entire route is expected to be let by May 25.

This latest 2.3-mile stretch will connect at the Washtenaw-Jackson county line with other portions of the expressway now under construction in Jackson county.

Kiwanis Goals Outlined by Lt. Governor

Clarence Hanselman of Dexter, Kiwanis lieutenant-governor of Division VI, made his official visit to the Chelsea club Monday evening.

The meeting took place in the social center of the Methodist church.

Hanselman summed up objectives of Kiwanis International for 1960, saying the theme for the year is "Freedom is Up to You."

The nine-point program of aims is as follows:

1. Exemplify the highest moral and spiritual values.
2. Stimulate youth to strive for responsibility.
3. Whose parents wish them to participate. Broaden all youth activities and emphasize Key clubs and Circle K clubs.
4. Organize and support effective programs for senior citizens.
5. Generate individual concern for safety. Improve traffic laws and information.
6. Demand sound fiscal policies in all phases of the economy.
7. Promote free enterprise and foster labor-management co-operation.
8. Increase knowledge of world affairs and promote the rule of law in international relations.
9. Lt. Gov. Hanselman also installed Floyd Fowler as a new member of the Chelsea club.

Guests at the meeting included Clarence Strauser of St. Johns, R. Risinger of Chelsea Products, Inc., and Olin Wyman, Tom Hopke, Bob Russell and Paul Otter of Belleville, who were here for an inter-club meeting.

The Chelsea club and the Ann Arbor club have been invited to meet at the Methodist Home Monday evening, March 14. The invitation was extended by the Rev. E. J. Weiss, superintendent of the Home.

Paul F. Niehaus will be in charge of the program which will include solos by Gene Oliver of Ann Arbor; a clarinet quartet, Sharon Smyser; Carol Cameron, Kathy White and Judy Grove; and a drum trio, Ted Wilson, Donna Sherman and Marilyn Pajot, with Sherry Frisinger as accompanist.

G-DAY
is Thursday
March 10

day of the
BIG 100

Gambles
FIRST annual
perennial
CENTENNIAL

AT YOUR
Gamble
STORE

Headquarters for The Handyman!

Here's a checklist of items that can put the finishing touch on your workshop project.

- ✓ **WOODTAPE...**
A thin slice of real wood, 96" long, 1" wide. Used for covering plywood edges.
- ✓ **PUTTY STIK...**
12 varied natural shades for filling nail holes in natural wood the easy way.
- ✓ **SPRED PATCH...**
A latex-based moist patching material, works like butter. Won't shrink. For surfaces that will be painted.
- ✓ **ADHESIVES, all types PLUS...**

The Most Complete Selection of Wood Finishes You'll Find

- ★ DEWT
- ★ REZ
- ★ FABULOY
- ★ GLIDTONE STAINS

"Where the Home Begins"

CHELSEA LUMBER CO.

DIAL GR 5-3391

SWINN BICYCLES

Now on display New 1960 Models

Here's top-flight Schwinn styling at a low, low price. Famous Schwinn Quality construction. Comes in 28, 24 and 20-inch models. SEE IT NOW!

\$37.95 to \$69.95

TERMS - TRADE-INS

MERKEL BROS.

giant

Master Oven

23" WIDE | cooks an oven meal for 30... all at one time

16" high | 18" deep

big capacity SPACEMAKER 30"

pushbutton electric range

REMOVABLE OVEN DOOR
Oven cleaning is so easy! Just lift the door off and reach in without bending or stretching over a door! Door goes back on easily, locks in place.

Model J-300
Choice of 5 colors or white

BIG RANGE COOKING IN COMPACT SPACE
A big oven like this makes big dinners a breeze... and a big buy like this makes it easy to start cooking better electrically right now! This 30-inch space-saving, money-saving G-E range gives you full scale G-E speed cooking and wonderful new G-E features, too.

- "No-Drip" Cooktop Edge
- Pushbutton Controls
- Extra Hi-Speed 8" and 6" Griddle Surface Units
- Focused Heat Broiler
- Enclosed Oven Units

\$149⁹⁵

with trade

FRIGID PRODUCTS

L. R. HEYDLAUFF

113 N. Main St. Phone GR 9-6651

TONIGHT! GAMBLE TV SPECTACULAR
Starring **HERB SHRINE!**
CHANNEL 6
7:30 P.M.

Workshop Space Offered Handicapped

A meeting of Washtenaw county handicapped residents and senior citizens, announced last week to be held at the Senior Citizens Guild office, was held instead at 7:30 o'clock last night in the conference room of the Ann Arbor Public Library.

The meeting was scheduled for the purpose of organizing a workshop for self-employment. A problem of work space for the organization was solved last week when the Senior Citizens Guild offered its facilities at 323 Packard St., Ann Arbor.

The new group, known as CAP, Inc., is for handicapped persons who have a maximum capability to operate their own business, according to John Walton, Washtenaw county representative of the state vocational rehabilitation service.

Walton, who is chairman of the advisory committee established last week to help organize the workshop, said the meeting last night was to include an explanation of HOPE, a workshop for handicapped persons in Howell.

Adoption of a charter, election of a board of directors and discussion of future plans also were scheduled. Persons attending were to be able to make applications for membership and work in CAP.

The workshop plan developed about the first of February when Mrs. Vanita Dickerson of Seio township, made a public appeal for quarters for her proposed plan to benefit people, like herself, who, though handicapped, could do some work. Mrs. Dickerson is paralyzed from the waist down.

Tiger Baseball To Be Aired on Station WPAG

Detroit Tiger Baseball games will be broadcast this year on Radio Station WPAG in Ann Arbor. The broadcast of all daytime games, beginning with the exhibition schedule March 12, will be heard on WPAG, with night games to be heard on WJR, Detroit.

The exhibition schedule will feature week-end daytime games. The regular season games will begin in April. WPAG announced starting time for exhibition games as 1:30 p.m. beginning on March 12.

Parma Man Killed in US-12 Crash

Russell J. Mangus, 36, of Parma, was pronounced dead on arrival at University Hospital, Ann Arbor, Saturday afternoon following a traffic accident on US-12 near Freer Rd.

According to reports of the accident, a car driven by Mangus, headed west, and an eastbound pickup truck operated by Gordon Frazer, 32, of Jackson, were involved in a head-on collision.

Frazer suffered injuries to his right foot and cuts and bruises. Both vehicles were extensively damaged.

The Atlantic entrance of the Panama Canal is 27 miles west of the Pacific entrance. Thus, a ship travels east, to move westward.

The hardest job is the one that you put off until the last minute.

Sup. Leonard Is Treasurer Candidate

Augusta Supervisor Seeks County Post On Republican Ticket

Sylvester A. Leonard, supervisor for Augusta township for the past seven years, announced last week that he is a candidate for Washtenaw county treasurer on the Republican ticket in the Aug. 2 primary.

Leonard, 62, is the first person to announce his candidacy for any county office on either ticket. William F. Verner, county treasurer for the past 12 years, has not announced officially whether he will seek his seventh two-year term. Verner also is a Republican.

A resident of Washtenaw county for 38 years, Leonard is chairman of the special services committee of the Supervisors Inter-county Committee and is a member of the drain, health, planning and legislative committee of the Washtenaw County Board of Supervisors.

Leonard said he believes that his duties in making out the tax rolls "and other connections the supervisor's job has with the county treasurer's office would be most valuable experience" for the post he seeks.

He was a member of the Board of Education of the Lincoln School in Augusta township for five years when he was elected township supervisor in 1952. He is a member of the board of directors of the Washtenaw chapter of the American Red Cross and is chairman of the zoning committee of the Milan Area Planning Commission.

Leonard also is vice-president of the Willis Kiwanis Club, a member of the Washtenaw County Farm Bureau and treasurer of the Stoney Creek Grange. He is a member of the Whitaker E.L.B. Church.

He was born June 28, 1907, in Macosta county and was graduated from Lincoln High School in June 1927. He was manager of a large chain store, employed by the Wayne County Road Commission and later by the Ford Motor Co. in the skilled trades for 15 years.

Married and the father of three sons, all at home, and a married daughter living in Germany, Leonard lives on a poultry farm in Augusta township.

Junior Chamber of Commerce RECREATIONAL SURVEY

Your favorite recreation:

What facilities should be added?

When would you prefer to use facilities?

What do you think is most important facility needed?

Bring or mail to Box JCC, c/o The Chelsea Standard

Former Chelsea Resident Dies at Battle Creek

Mrs. Goldie Brown of Battle Creek, formerly of Chelsea, died Monday, Feb. 29, and funeral services were held Friday at Gaudie, Ky., where she was born.

Mrs. Brown's survivors include two nieces and a nephew here, Mrs. A. J. Hale, Mrs. Clyde Martin and Luther Hale.

Mrs. Hale and Luther Hale attended the funeral services.

Telephone Your Club News to GR 5-3581

Brother-in-Law of Mrs. Julius Reule Dies at Michigan Center

Mr. and Mrs. Julius Reule, Linda Meehan and Paul Reule were in Jackson Monday to attend the funeral of Mrs. Reule's brother-in-law, Albert Kuykendall, a Michigan Center barber the past 30 years. He died of a heart attack Thursday night.

Mr. Kuykendall was an uncle of Connie Zimmerman, well known here as organist at Community Fair programs.

HEADQUARTERS for "DO IT YOURSELF" materials

We're always interested in helping you with small projects—big ones too. Tell us what you have in mind—we'll help you to start.

DIAL GR 5-3391
"Where the Home Begins"

CHELSEA LUMBER CO.

Week's Mystery Farm Is Home of Hugo Ottoman and Sons on Waterloo Road

A photograph of Mystery Farm No. 88, which appeared in the March 3 issue of The Standard for readers to identify is the Ottoman place at 12745 Waterloo Rd. All but a small portion of the 300-acre farm is in the township, the remainder being in Sylvan township.

Recently tiled to assure drainage, practically the entire acreage now is tillable. Ottoman has owned the farm for over 40 years.

The main house is the home that on the farm when Ottoman first placed but all other buildings, except the barn were destroyed by him. The barn has been recently remodeled.

Two of Ottoman's six sons now live on the farm in partnership and both have built the new homes which appear at either side of the original house.

Joseph Ottoman and his wife and three children, Joan, Roger and Karen, live in the new home at center front of the photo, which is east of the old home, while Clarence and his wife and two children, Susan and Theresa, live in the new home to the west.

The Ottomans are members of St. Mary's Catholic church and the men are members of the church's Holy Name Society. They are also members of the Knights of Columbus. Their wives are members of St. Mary's Altar Society. Both families are also members of the Wolverine Farm Bureau group of Dexter township.

The Ottomans do general farming and raise cows, pigs and chickens.

The Hugo Ottoman family of six sons and one daughter, in addition to Clarence and Joseph, are Rudolph Ottoman of Ann Arbor, who is employed at Federal Screw Works here, Walter Ottoman of Island Lake, Edward Ottoman, a Stockbridge farmer, Albert of Highland Park, who is employed by the city, and Mrs. Mary Kittel of Ann Arbor. Mrs. Hugo Ottoman died five years ago.

People who called in the correct identification of the Ottoman farm are the men at Blaess Elevator Co.; also, Charles Curtis, Arthur Paul and Mrs. Raymond Eger.

Hugo Ottoman bought the farm from Charles Balfanz. Dexter township tax rolls first list Balfanz as the owner in 1907.

According to an 1888 tax roll listing, George Wheatman was the owner and, 15 years later in 1898, the owner's name was given as Catherine Loeffler.

Records of owners prior to 1888 were not available.

Two Chelsea Notaries Re-Appointments Listed By Secretary of State

Secretary of State James M. Hare has announced the names of two Chelsea residents who have been appointed or re-appointed as Notaries Public during the past three months. They are: Florence L. Fox, and Ann W. Wood.

According to Hare, an applicant for appointment as Notary Public must be 21 years of age or older, be a resident of Michigan, and a resident of the county for which he or she desires to be appointed.

"A fee of \$1.00 must be sent in with the written application to the Governor," Hare said, "and the application must be endorsed by a member of the Legislature, or a Circuit or Probate Judge of the county district or circuit in which the applicant is a resident."

"This statutory fee of one dollar was established on April 17, 1871, almost 100 years ago," Hare reminded. "In those days a dollar would buy a first-class seven-course dinner. Governmental salaries were lower too. Perhaps it is time that elected public officials consider adjusting these century-old fees to realistically match today's governmental operating costs."

30 CHS Students Take First Of Merit Scholarship Tests

Approximately 80 students at Chelsea High School took the National Merit Scholarship Qualifying Test (NMQST), Principal Charles Lane has announced. The test was administered at the high school at 9:00 a.m. Tuesday, March 8.

All students who wish to be considered for Merit Scholarships to be awarded in 1961 were required to take the test at this time.

The National Merit Scholarship Qualifying Test is a three-hour measure of educational development and college aptitude. Emphasis is on broad intellectual skills, and on understanding and ability to use what can be learned, rather than on sheer knowledge of facts.

The test is the first step in the sixth annual competition for Merit Scholarships provided by some 100 corporations, foundations, professional societies and individuals, as well as by the National Merit Scholarship Corporation itself. Over \$15,000,000 has been awarded in the first four years of the program.

The number of scholarships awarded in any year depends upon the extent of sponsor participation. The basic continuing program is for \$1,000,000 a year (for ten annual programs). It is estimated that sponsor participation this year will add over \$2 million in sponsored Merit Scholarships. It is also expected that various

outside-the-program sources will increase the present amounts offered to high scoring students by several million dollars.

For students taking the test on March 8, results will be reported to all participating schools before the end of the spring semester in time for use by class advisors. The scores may also be used in many high schools to help students make decisions about college and the most appropriate courses to major in. Many students throughout the country who do not expect to win have registered for the test in order to learn more about their individual strengths and weaknesses.

Some 10,000 semifinalists, the highest scorers in each state, will be named early next fall. Names of semifinalists are published in a booklet which is widely distributed among colleges and other scholarship agencies.

Each semifinalist will be asked to take a second examination. Those who repeat their high performance in the second examination will become finalists in the Merit Program. Winners of Merit Scholarships will be selected from this group of finalists on the basis of school records and recommendations, test scores, extracurricular and outside-of-school interests and accomplishments, and other indications indicating future promise.

(Continued on page 13)

BANK AUTO LOANS ARE BEST!

FOLLOW THE POPULAR CHOICE. A Bank Auto Loan will enable you to finance your next car economically, and arrange your insurance coverage where you can get local attention.

3% NOW PAID ON ALL SAVINGS DEPOSITS

CHELSEA STATE BANK

Member Federal Reserve System

Member Federal Deposit Insurance Corp.

Royal Values 22" cut POWER MOWER

ONLY \$49.88 IN CARTON

COMPARES WITH MOWERS SELLING AT \$65.95.

USE OUR EASY PAY PLAN

We have many other OUTSTANDING POWER MOWERS. Come in and look over our line before you buy or trade. WE CAN SAVE YOU MONEY!

New built-in power booster governor that increases engine power as much as 30% at the blade where the power is needed.

MERKEL BROS.

CAR-TUNES

"INCLUDING FEDERAL AND STATE TAX OUR FREE ESTIMATE NOW COSTS \$3.50"

Nothing like this ever happens here, nor ever will! When we say our estimates are FREE, we mean exactly that. There's no obligation on your part either. We welcome the opportunity to give a firm estimate on any job of servicing or repair. YOU then decide if you want us to do the work.

Alber Motor Sales, Inc.

GULF PRODUCTS — DE SOTO — PLYMOUTH

295 SOUTH MAIN STREET CHELSEA, MICH.

(POLITICAL ADVERTISEMENT)

- VOTE -

DONALD BALDWIN FOR TRUSTEE

HARVEY LIXEY FOR TRUSTEE

GEORGE WINANS FOR CLERK

STEPHEN CLARK FOR TRUSTEE

THOMAS SMITH FOR ASSESSOR

WALLACE WOOD FOR TREASURER

MARIBETH SOULE FOR LIBRARY BOARD

MABEL FOX FOR LIBRARY BOARD

INDEPENDENT

Established 1879 **The Chelsea Standard** Telephone GR 5-5241
General Excellence Award by Mich. Press Ass'n, 1951-1953-1956-1959
Walter P. Leonard—Editor and Publisher

Published every Thursday morning at 108 East Middle Street, Chelsea, Mich., and entered as second class matter at the postoffice at Chelsea, Mich., under the act of March 3, 1879.

Subscription Rates (Payable in Advance):
In Michigan: One Year \$3.00 Six Months \$1.75 Single Copies \$.10
Outside Michigan: One Year \$4.00 Six Months \$2.25 Single Copies \$.10
Service men or women, anywhere, 1 year \$3.00
RETURN POSTAGE GUARANTEED

South American Tourist Finds Amazing Similarities in Chile, U. S.

As President Eisenhower took off from the capital early of a snowy Washington's birthday morning on his South American tour, the thoughts of many of his fellow citizens took wing with him—away, for a brief vacation from the threats of the Kremlin, the problems of Paris and Bonn and the feuds of the middle east.

Of the four capitals in which the President urged his "good partner policy" (which seems to be a sort of non-belligerent Monroe Doctrine with economic overtones), the average North American would doubtless feel most at home in the Chilean metropolis. In writing of this "stringbean land" that extends from the Peruvian border to Cape Horn in a narrow strip between the Andes and the Pacific, an article in the current issue of National Geographic Magazine says in part:

"Chileans in temperament are much like North Americans—industrious, bustling, sober. They are aptly called the Yankees of South America. And the blue eyes, fair skin, and blond hair of many of the residents bear witness to heavy infusions of the same Anglo-Saxon and Teutonic blood that predominates in the United States."

"For a thumbnail sketch of this 'narrowest country on the globe,' here, again, the author says: 'I saw wasteland drier and more lifeless than the Sahara, yet Croesus-rich in minerals; fruitful farmlands where topsoil measures 800 feet thick; lake and mountain scenery as breath-taking as any in the Alps, with smoking volcanoes thrown in for good measure; and fjord and glacier country as rugged as that of Norway. Dominating it all rose the Andes, the loftiest of mountain chains after the mighty Himalayas.'"

The arid north, which once furnished most of the world's fertilizer from the only natural nitrate deposits on the globe, is now producing much of its copper, and contains the earth's largest known deposits of this strategic metal. At the far end of the stringbean, in Tierra del Fuego, the oil strike of 15 years ago provides feverish activity and furnishes two-thirds of the nation's crude requirements—from which Chile refines all its gasoline. In between, an integrated steel mill, using high-quality Chilean ore, produces half a million tons of ingot a year. And from end to end, abundant electric power is turning the wheels of more and more new and diversified industries.

All this, plus friendly, energetic people, makes Chile the land of Manana—in the most progressive sense.

Researchers Recommend Larger Auto License Plates . . . Not Small Tabs!

The Highway Research Board in Washington, D. C., has just received a report from the University of Illinois on the first national study of auto license plates. The study, undertaken at the request of the Illinois secretary of state, reveals what license plates should be and do.

Tags should be bigger, the researchers say. They should be 6 by 14 inches instead of 6 by 12 inches—the recently established national standard. To make plates easier to read, advertising slogans should be removed from them and the numbering systems, on them simplified, the researchers reported.

Another significant part of the study claims that plates should be reflective so they are easier to see. Covered with a material that reflects headlights, such tags may be seen from as far away as 2,000 feet.

Seven states now issue these "safety" plates to all their registered motorists, and 14 other states issue them to some cars, truck and buses.

Considering the difficulties of driving at night and the problems police officers have in reading license plates, we think any recommendations for simplicity and visibility contained in the Illinois study should be followed in all 50 states and in Michigan, particularly, where we now have a tiny tab in the corner of the plate to designate the year, done in the guise of economy at the expense of safety.

JUST REMINISCING

Items Taken from the Files of The Chelsea Standard

4 Years Ago . . .

Thursday, March 8, 1956—

Homer Stoffer, former Lyndon township supervisor, died Saturday evening.

CHS FFA parliamentary procedure eligible to compete at state contest after winning regional contest at Britton.

14 Years Ago . . .

Thursday, March 14, 1946—

T. Kent Walworth and Julius N. Strieter who have been partners in the Walworth & Strieter hardware store since 1914 have dissolved the partnership and Strieter is now the sole owner.

Paul F. Redbert, stationed at Roswell, N. Mex., promoted from captain to major and has been honorably discharged from military service.

Margaret Beaman and George Prinsing are Chelsea students enrolled for the second semester at Western Michigan.

24 Years Ago . . .

Thursday, March 12, 1936—

Only 87 votes were cast in Chelsea's annual village election; the

quietest recorded in many years. Elected and re-elected, all on the independent ticket, are Roy Harris, president; James Munro, clerk; Ed. Miller, treasurer; Conrad Lehman, Wilbur Hinders and F. W. Merkel, trustees for two years; Ed. Kousch, assessor. Trustees remaining in office are J. E. Weber, H. B. Murphy and Ernest Adam.

In the 34 Years Ago column (March 13, 1902): The banks in the cities of Ann Arbor and Ypsilanti and the villages of Chelsea, Manchester and Milan had on deposit at the close of business Feb. 26, approximately \$6,000,000. Of this amount \$827,801.29 was in Chelsea banks.

34 Years Ago . . .

Thursday, March 11, 1926—

Numbered among the younger industries of Chelsea but promising to develop into an undertaking of major proportions is that of fox farming by J. D. MacManus, who operates the Chelsea Silver Black Fox Ranch on M-17 west of Chelsea.

With Bell Telephone Co. celebrating its 50th anniversary, Chelsea notes that the first telephone in Chelsea was a toll line at Glass

(Continued on page 14)

Sky Display



MICHIGAN MIRROR

By Elmer E. White, Secretary, Michigan Press Association

Angels of mercy in Michigan think his bill for doctors, hospitals, drugs and medical insurance is increasing too rapidly as it is. "Everyone I've talked to blasts the doctors," reported one person.

Support of the MD's will be very important to the RN cause. Nearly all 20,000 registered nurses in Michigan work directly for a doctor, in a hospital controlled by doctors or indirectly under the supervision of a doctor.

There are 15,000 more registered nurses who are not working in the medical profession. Some of these have married and are raising families. Others left for higher wages and better working conditions in other fields says MSNA. The nurses organization is sure that many of this group could be interested in returning to the patient's bedside if the pay schedule were realistic.

"The seriousness of the growing nurse shortage will depend upon how fast something is done to make the profession one where a woman can perform her important duties proudly and for an adequate salary," said Miss Walsh.

"Unless something happens to bring this about, conditions will worsen."

More than 100 Michigan communities now have industrial development corporations to construct buildings for sale or lease to industry they invite to move in. At least 20 have actually played a part in building plants this last year.

Don C. Weeks, director of the Michigan Economic Development Department, says that the great service a state development agency can perform is to help communities do a better job helping themselves, and he points with pleasure to the success record of many Michigan communities.

Here is a list of fruitful accomplishments:

South Haven built a new plant for the Lovejoy Flexible Coupling

Co. of Chicago. This is the fourth industrial building project undertaken in that city in recent years.

The Owosso Development Organization built two additional factory buildings in 1959, one for the Shiawassee Metal Finishing Co. and the other for the Owosso Container Co. Muskegon, which has a record of assistance to industry going back many years, added another accomplishment during 1959 by assisting in the construction of Brunswick-Balke-Collender Company's new automatic pinsetter production facility.

The village of Elk Rapids, which obtains basic financing through one-dollar-a-week contributions from members of a development corporation, built its fourth new factory building last year. This plant was constructed for the Clinton Division of Snyder Tool Company of Detroit, as a facility in which to make precision machinery for use by pharmaceutical manufacturers.

Among other communities which took part in constructing new plants through industrial development corporations or similar organizations in 1959 were: Berrien Springs which built a new plant for the Welcraft Company of New Carlisle, Ind.; Brown City for Frank Motor Homes, Inc.; Marys-

ville for Pre-Cast Concrete Co.; Caro for Weldments-Pacific Inc.; Inlay City for Federal Press Steel Co.; Kingston for Mariette Enterprises, Inc.; Cadillac for Plymouth Industries; Lexington for Redall Industries; Mariette for Metalcraft Inc.; Rogers City for Nicolay Dancy Co.; Traverse City for Arza Products Co.; Crystal Falls for Cleveland Metal Fabricators Inc.; West Branch for Evans Products Co.; Sandusky for the Elkton Box Co.; and Gagetown for C & B Industries.

Although this list of communities is probably not complete, it gives an indication of the wide spread interest by development groups throughout the state in the local industrial development corporation as a device for assisting industries already located in the community or in bringing new industries which also contribute to the area's growth.

By FRANK C. MORRIS

Magic of Williams' Charm Departed

Michigan and the United Automobile Workers have come now to the crossroads. With the magic of Gov. Williams' charm swept from the platform, the people can make a clear, bold decision next November about the road their state is to follow.

Even the most radical dreamer of the crew-cuts surrounding the Governor has noted that the majority of the voters did not swing to the Democratic party because of the platform written for it by the UAW.

Like Walter Reuther, incumbents in the state government have realized that Williams alone led them to victory by the sheer force of his personal appeal.

No politician in the history of the United States understood better than Williams the knack of stepping down among the people and making them feel important. By dancing and cracking jokes and handing out green ties, Williams created a relationship that has been little short of real love.

It is a paradox of politics that the Governor's decision not to run again has created a keen sense of loss among hundreds of thousands of citizens who are violently opposed to the socialistic aims of the UAW.

So the voters next November will be able to make a clear choice between the road being paved for them by Solidarity House and the path away from group dictatorship. Their decision will be made free from the personal attraction of a popular leader.

As the 1960 election draws close, the goals of the two political parties will be crystallized for the first time since Hicks and Martha Griffiths came out of a basement meeting in their Detroit home carrying a banner with the strange device: "Soapy For Governor."

That was in 1948. Walter Reuther and his union associates were not parties to the scheme. But when Williams won the nomination from Victor Bucknell, backed by the AFL, and from the late Burnett J. Abbott, backed by the "regular" Democrats, the UAW jumped aboard the bandwagon.

There was in 1948, Walter Reuther and his union associates were not parties to the scheme. But when Williams won the nomination from Victor Bucknell, backed by the AFL, and from the late Burnett J. Abbott, backed by the "regular" Democrats, the UAW jumped aboard the bandwagon.

There was in 1948, Walter Reuther and his union associates were not parties to the scheme. But when Williams won the nomination from Victor Bucknell, backed by the AFL, and from the late Burnett J. Abbott, backed by the "regular" Democrats, the UAW jumped aboard the bandwagon.

Although this list of communities is probably not complete, it gives an indication of the wide spread interest by development groups throughout the state in the local industrial development corporation as a device for assisting industries already located in the community or in bringing new industries which also contribute to the area's growth.

Williams won the election that year by 1,154 votes over former Gov. Harry F. Kelly following a recount. The union took command. The loyal Governor submitted, because he believed in the program prepared by Reuther and the socialistic Americans For Democratic Action, of which he had been a founding member in Michigan.

Williams realized, too, that he needed the potential political power of the union if he was to be re-elected. The development of the union's

—by CARL MELM

From my front porch . . .

. . . I watch the world go by!

I've stood stiff at Attention, heart sweating, spine tingling, on foreign battlefields as our band played The Star Spangled Banner and The Flag was run up the staff.

There we had fought and many had died; Old Glory at the top of the mast, proudly flying, ever meant much more to us than just another parade formation. Our National Anthem, therefore, has kept its hold deep in the heart of me and every veteran—even though its words are hard to remember and its music is all but un-singable except for trained voices.

Even so, lately I've been invariably thrilling to the more and more frequent renditions of "The Battle Hymn of the Republic" and, I believe, with good reason. Most inspiring of all, perhaps, is the fine recording made by the great Mormon Tabernacle Choir of some 300 voices.

Once again, as in younger days, my heart has swelled, my spine tingled; I had all but forgotten the sensation. I've been moved to my depths by that powerful, stirring music that any band can play, any voice can sing.

Listen to its memorable words: they have such meaning for us today when atheistic Communism boasts to destroy us—and all democracies: "As He died to make men holy, let us live to make men free—Our God is marching on."

"Glory—Glory Hallelujah!" Every American man, woman, child—can sing that great chorus. Every grade school, every high school, every hometown band in the land, can play it. Let's sing it as often as we can—and mean it!

—CARL MELM

There is nobody busier than they who have nothing to do. Jonathan Swift.

An income tax form is like laundry list—either you use it or your shirt—Fred Allen.

There is nobody busier than they who have nothing to do. Jonathan Swift.

There is nobody busier than they who have nothing to do. Jonathan Swift.

There is nobody busier than they who have nothing to do. Jonathan Swift.

There is nobody busier than they who have nothing to do. Jonathan Swift.

There is nobody busier than they who have nothing to do. Jonathan Swift.

There is nobody busier than they who have nothing to do. Jonathan Swift.

There is nobody busier than they who have nothing to do. Jonathan Swift.

There is nobody busier than they who have nothing to do. Jonathan Swift.

There is nobody busier than they who have nothing to do. Jonathan Swift.

There is nobody busier than they who have nothing to do. Jonathan Swift.

There is nobody busier than they who have nothing to do. Jonathan Swift.

There is nobody busier than they who have nothing to do. Jonathan Swift.

There is nobody busier than they who have nothing to do. Jonathan Swift.

There is nobody busier than they who have nothing to do. Jonathan Swift.

There is nobody busier than they who have nothing to do. Jonathan Swift.

There is nobody busier than they who have nothing to do. Jonathan Swift.

There is nobody busier than they who have nothing to do. Jonathan Swift.

There is nobody busier than they who have nothing to do. Jonathan Swift.

There is nobody busier than they who have nothing to do. Jonathan Swift.

There is nobody busier than they who have nothing to do. Jonathan Swift.

There is nobody busier than they who have nothing to do. Jonathan Swift.

There is nobody busier than they who have nothing to do. Jonathan Swift.

There is nobody busier than they who have nothing to do. Jonathan Swift.

There is nobody busier than they who have nothing to do. Jonathan Swift.

There is nobody busier than they who have nothing to do. Jonathan Swift.

There is nobody busier than they who have nothing to do. Jonathan Swift.

There is nobody busier than they who have nothing to do. Jonathan Swift.

There is nobody busier than they who have nothing to do. Jonathan Swift.

There is nobody busier than they who have nothing to do. Jonathan Swift.

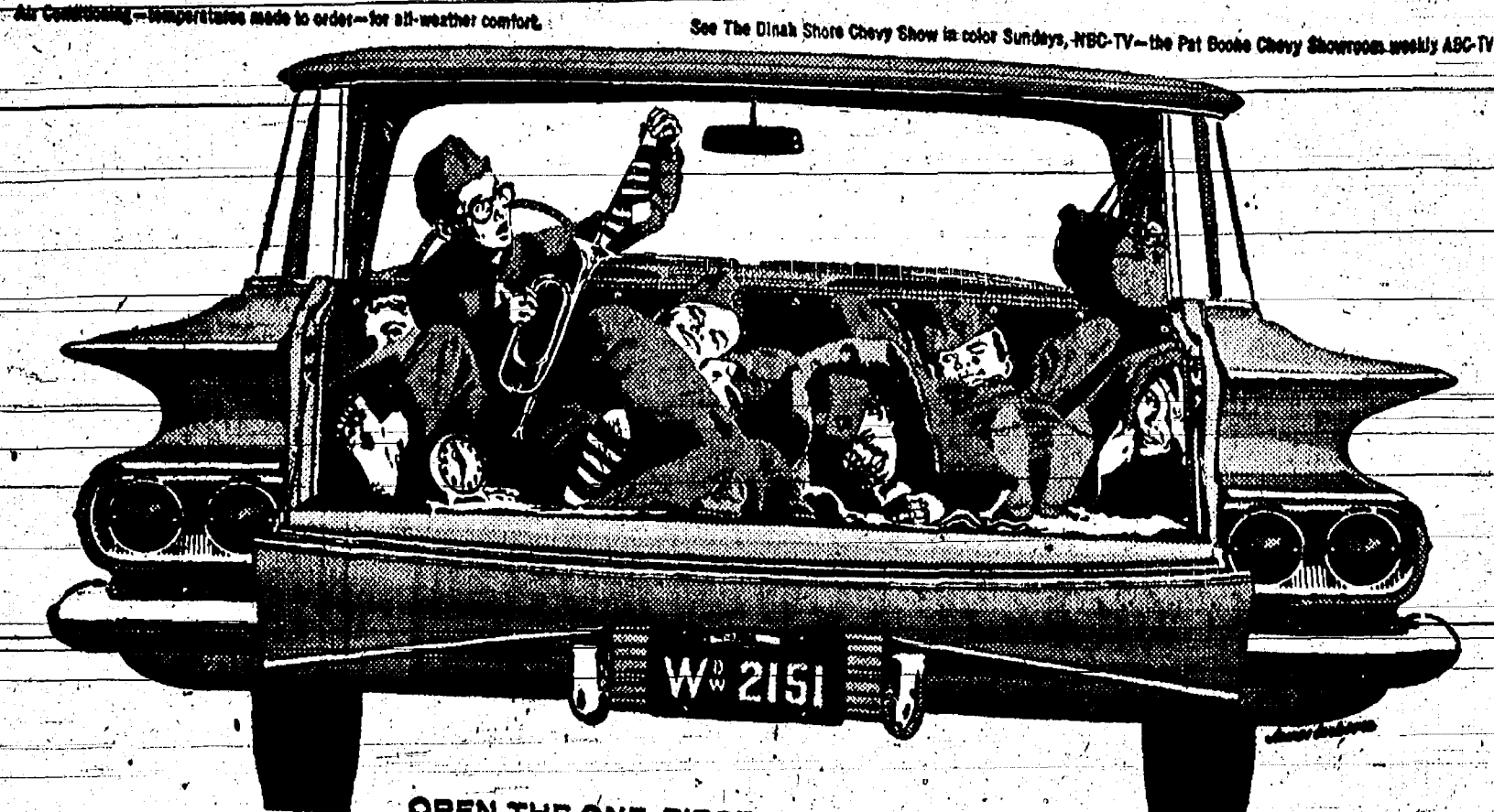
There is nobody busier than they who have nothing to do. Jonathan Swift.

There is nobody busier than they who have nothing to do. Jonathan Swift.

There is nobody busier than they who have nothing to do. Jonathan Swift.

There is nobody busier than they who have nothing to do. Jonathan Swift.

There is nobody busier than they who have nothing to do. Jonathan Swift.



OPEN THE ONE-PIECE TAILGATE—SEE THE
WIDE INSIDE

DIFFERENCE IN A CHEVY WAGON!

Chevy wagons are widest where wagons should be—with the widest seating, the widest cargo space and the widest choice of power teams in the low-price field. Check any of the five handy, handsome new models at your dealer's. You won't find those versatile advantages in any other wagon near Chevy's size and price!

- Widest seating, front and rear—up to a full 3.1 inches wider in front, up to 4.3 inches in the rear.
- Widest cargo area—a load platform's a whopping 5 1/2 feet wide, designed for a wide variety of cargo.
- Widest area between wheel housings—allows more room for bulky loads.
- Widest choice of engines and transmissions—24 combinations in all, to give you peak performance with any kind of load.
- Full Coil springs that ride right loaded or light—no other wagon near Chevy's price and size.
- More road and ramp clearance—you can take full loads over bumps and grades without scraping bumpers.
- Truly practical 9-passenger model—with roomy rear-facing third seat and electric roll-down rear window.

See your local authorized Chevrolet dealer for fast delivery, favorable deals!

SPAULDING CHEVROLET SALES & SERVICE
CHELSEA, MICHIGAN

BOWLING NEWS

Ladies' Sylvan League

Standings as of March 2

	W	L
Colonial Manor	78	28
Wilson Dairy	67 1/2	38 1/2
Sylvan Lanes	67	37
Palmer's T-Birds	63 1/2	40 1/2
Balmer's Brake Service	61 1/2	42 1/2
Chelsea Milling	61	43
Foster's Men's Wear	48	56
Patty Ann Shoppe	46	58
Jiffy Mixers	40	64
Chelsea Drug	36	68
Frigid Products	32	72
Twin Pines Dairy	25 1/2	78 1/2

High team series without handicap: Colonial Manor, 2,184.

High team series with handicap: Palmer's T-Birds, 2,114.

High team single game without handicap: Colonial Manor, 728.

High team single game with handicap: Palmer's T-Birds, 725.

450 series and over: P. Poertner, 481; D. Green, 468; J. Huston, 468; M. Breitenwischer, 464; D. Kinsey, 462; B. Christwell, 454; E. Hummel, 453; M. E. Sutter, 450.

400 series and over: B. Hatley, 448; M. Scott, 446; J. Fletcher, 445; A. Knickerbocker, 440; R. Wenz, 435; N. Kern, 428; R. McGibney, 426; P. Shoemaker, 424; G. Wheeler, 419; R. Pierce, 417; J. Meikel, 415; A. Boham, 400.

Spitts picked up: M. Neal, 4-5-7; R. McGibney, 3-10; J. Fletcher, 3-10; D. Fouty, 3-10; J. Appel, 5-7; G. Wheeler, 5-10; E. Wallnitz, 3-10; M. Scott, 3-10; N. Kern, 2-7; A. Boham, 5-7; J. Meikel, 5-6; J. Harris, 4-5; M. E. Sutter, 3-10; R. Winchester, 3-10.

Thursday Night League

Standings as of March 3

	W	L
Sylvan Lanes	82	34
Merkel Bros.	80 1/2	35 1/2
Palmer's T-Birds	54 1/2	41 1/2
Detling's Marathon	53	43
Gieske TV	49	47
Chelsea Spring	48	48
Lou & Sam	46 1/2	49 1/2
Chelsea Mfg. No. 2	44	52
Wolverine Tavern	42	54
Research Fuel	41 1/2	54 1/2
Frank's Bar	41	55
Jiffy Mixers	38	60

200 games: L. Appel, 237-208; C. Koenigter, 226-212-202; D. Albrecht, 213; D. Hatley, 212; P. McGibney, 211; S. Hayden, 201.

500 series: P. McGibney, 547; D. Hatley, 547; R. Wurster, 547; S. Hayden, 520; D. Albrecht, 517; W. Wilkerson, 510.

600 series: C. Koenigter, 640; L. Appel, 615.

Monday Night League

Standings as of March 3

	W	L
Alber Oil Company	64	86
Chelsea Drug	59 1/2	40 1/2
Sylvan Center	58 1/2	41 1/2
Stop & Shop	57	43
Chelsea Mfg. No. 1	55	44
Chelsea Grinding	55	45
Foster's Men's Wear	53 1/2	46 1/2
Schneider's	52	48
Chelsea Products No. 2	42 1/2	57 1/2
Spaulding Chevrolet	39	61
Chelsea Products No. 1	35 1/2	64 1/2
The Pub	27 1/2	72 1/2

200 games: C. Balze, 244; D. Larson, 236; G. Knickerbocker, 235; C. White, 223; D. Alber, 214; L. Appel, 205; P. McGibney, 203; A. Keeser, 201.

500 series: C. White, 588; L. Appel, 585; C. Schneider, 555; C. Balze, 550; R. Koch, 549; G. Winchester, 548; D. Alber, 538; W. Worden, 532; C. Kruse, 532; G. Knickerbocker, 526; S. Policht, 519; G. Lawrence, 515; F. Klobuchar, 513; P. DeFanti, 507; A. Keeser, 503; W. Eisenbeiser, 503.

Chrysler Proving Ground League

Standings as of March 7

	W	L
Dexter Bowling Club	62	40
Wolverine "Kegs"	57	43
Wolverine "Taps"	55 1/2	44 1/2
Tison Motor Sales	46 1/2	53 1/2
Rieth's Plumbing	46	54
Foor's Service	46	54
Detling's Marathon	46	54
Frigid Products	41	59

High 3 games team: Dexter Bowling Club, 2,432.

High single game team: Frigid Products, 895.

High 3 game, individual: R. Kiel, 676.

High single game, individual: L. Dann, 218.

200 scores: Dann, 218; Poertner, 212; R. Kiel, 205, 203; C. LaRoe, 203; Padgham, 202.

Sunday Mixed League

Standings as of March 6

	W	L
Jelly Balls	64	28
Gutter Balls	49 1/2	42 1/2
King Pins	44	48
Rockets	42	50
Runts	40	52
Four Pins	38 1/2	55 1/2

Men, 200 games: M. Appel, 234; D. Larson, 200.

500 series: M. Appel, 572; D. Larson, 566.

Women, 400 series: R. Pierce, 466; A. Larson, 415; A. Fahrner, 414.

The heaviest artillery barrage ever heard on the Western Hemisphere was released on July 1, 1959, when 218 cannon were in action at Gettysburg.

The best literature in the world is a paragraph in the home town paper about you.

CAPABLE — EFFICIENT — PROGRESSIVE THE PEOPLE'S PARTY

DONALD ALBER For President

DON (DOC) ALBER, incumbent candidate for president, resides at 423 McKinley Street. Born in Chelsea, 33 years ago. Married and father of four children. Is a graduate of St. Mary's School and Chelsea High School. Attends St. Mary's Church. Is a past president of Kiwanis Club of Chelsea, member of Knights of Columbus, Holy Name Society. Has served three years as Village President.



SYLVIA FERGUSON For Treasurer

SYLVIA FERGUSON, candidate for treasurer, has been resident of Chelsea area for more than 20 years, now residing in the Village of Chelsea. Was graduated from Dexter High School and Cleary College. Held positions at Eastern Michigan College and University of Michigan and more recently in the offices of A. D. Mayer and John P. Keusch in Chelsea. Husband is employed by Chelsea Products, Inc. Four children, all of whom were graduated from Chelsea High School. Member of Congregational Church, Women's Club of Chelsea, and the North Lake Extension Group.



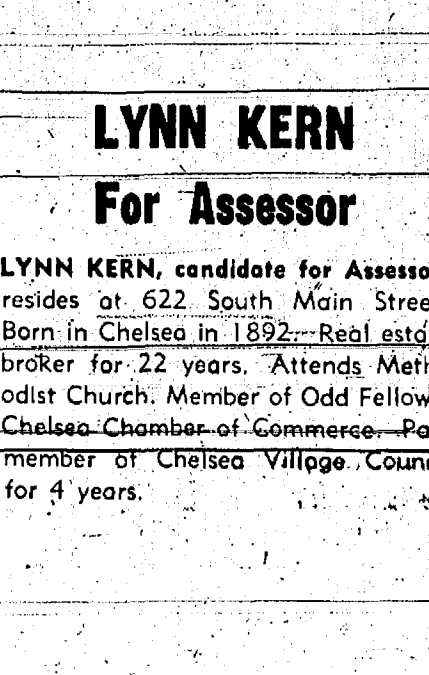
WILLIAM K. BLAESS For Trustee

WILLIAM K. (BILL) BLAESS, incumbent candidate for trustee, 36 years old, resides at 730 Taylor Street. Married and father of four children. Graduate of Ann Arbor High School. Past Commander Herbert J. McKune Post 31, American Legion, Past Washtenaw County Commander of the American Legion, Past President Chelsea Chamber of Commerce. Member of St. Paul's E. & R. Church. Co-partner in Blaess Elevator Co. of Chelsea. Has served as trustee for two years.



JOHN PIERSON For Trustee

JOHN PIERSON, candidate for trustee, age 35, was born and educated in New Jersey, and has been a resident of Chelsea for the past 12 years. Married to the former Marian Eisele. Served in the U. S. Navy for 3 1/2 years during World War II. Has been in the building business for 16 years and is president of Chelsea Associated Builders. Member of St. Paul's Church, Masons, American Legion, V.F.W., Rod and Gun Club and is on the Board of Directors of the Chelsea Chamber of Commerce.



VICTOR KOHSMAN For Trustee

VICTOR KOHSMAN, incumbent candidate for trustee, resides at 246 Park Street. Born in Rogers City, Mich., in 1901. Attended Rogers City Schools. Married, father of two children. Previously affiliated with Sinclair Oil Co. in Chelsea. Has previously served as village trustee for four years. Member of Chelsea Rod and Gun Club. At present is a village trustee.



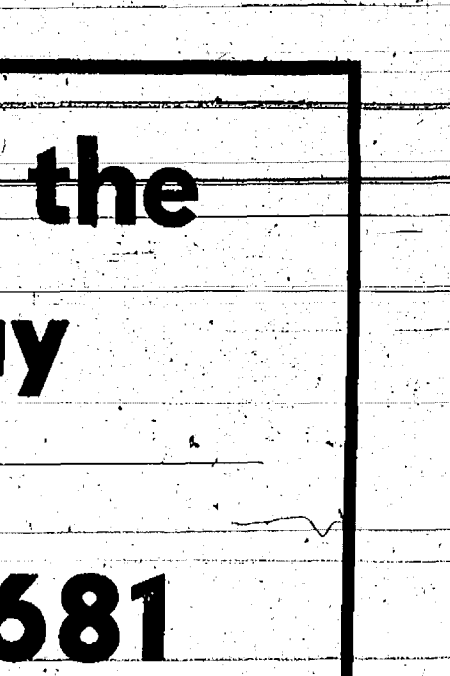
LYNN KERN For Assessor

LYNN KERN, candidate for Assessor, resides at 622 South Main Street. Born in Chelsea in 1892. Real estate broker for 22 years. Attends Methodist Church. Member of Odd Fellows, Chelsea Chamber of Commerce. Past member of Chelsea Village Council for 4 years.



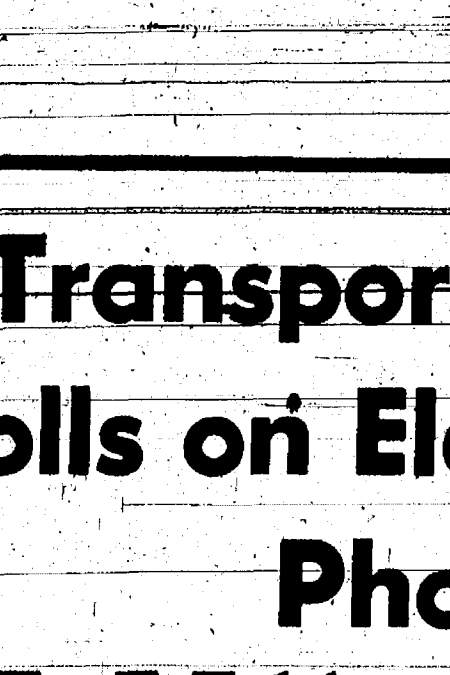
JAMES D. SHADOAN For Library Board

JAMES D. SHADOAN, candidate for Library Board Trustee, resides at 385 Washington, and practices medicine in Chelsea. He is married, father of 3 children. Was born and raised in Trenton, Mich., and served in the Air Force during the Korean conflict. His education was at Eastern Michigan College, U. of M. Medical School and St. Joseph Mercy Hospital, Ann Arbor. Member of St. Paul's E. & R. Church and Chelsea Rod and Gun Club.



DOROTHY NIELSEN For Library Board

DOROTHY NIELSEN, candidate for Library Board Trustee, Born in Blissfield. Attended Standish High School. Resides at 404 Garfield with her husband, a former village president. Attends Congregational church, member of Naam! Chapter of Congregational Women's Society. Member of Chelsea Community Farm Bureau group.



COMMENT on SPORTS

Winter Olympics

Washington D. C.—The Russians piled up a smashing victory margin in the winter Olympic Games held in California. There is no reason to believe they will not add to their laurels in the summer games later in the year.

This is not a surprise and it should stimulate American officials and sports organizations to renewed thought on the amateur sports question. We are not suggesting that amateurs be paid for sports performances but—if we are to get into the picture on an equal with Russian chances—we might have to devise a way for amateurs to be compensated for their costs.

Or there might be some way for our amateurs who have accepted some pay or performed in some events which now bar them from Olympic teams to be included in our future Olympic squads. If out-and-out pros, this would bar participation, but if they are largely amateurs, with minor exceptions, there may be a way to use their talents.

It is not all-important to win the Olympic Games, of course. The United States should not sacrifice the principle of the games to win. But if there are ways in which our chances could be improved without doing violence to our amateur concepts (which have retarded the advance of tennis, as one example) we should move forward along this line.

The Russians have carried out a massive physical training program and they have concentrated on sports preparation for the Olympic Games to a far greater degree than we have. The results are obvious. They won in 1956 and they are going to win both games this year unless the summer games are a complete surprise.

For one thing, the Russian women far excel the U. S. females and they pile up enough points in this field alone to insure victory over the United States.

All of which brings to mind the warning of Admiral Hyman Rickover, who says that our school and college sports programs, featuring teams of stars playing other school teams, is a poor second to a massive program designed to achieve the physical conditioning of every student.

Our schools and colleges could help our Olympic chances with sports programs more in line with Rickover's suggestion.

A man used to vicissitudes is not easily defeated.—Samuel Johnson.

County-Wide 4-H Party Set Saturday

A county-wide 4-H party is being held at the Tappan Junior High School, 2201 East Stadium Blvd., Ann Arbor, at 8:15 p.m., Saturday, March 12. The Washtenaw County 4-H Club sponsors this annual party which features group games, entertainment and square dancing. This event brings to a close the annual 4-H Club Week—March 1 through 12. All 4-H members, parents, and service club members are encouraged to attend this party.

Fossils of 29 species of prehistoric reptiles were found in one mile in Belgium, 750 feet underground.

Jerusalem lives on the tourist trail and has more travel agencies than grocery stores.

GULF GULFANE
L.P. GAS STATION

Wholesale Gas Service
We Have a Large Stock of

SPACE HEATERS
FLOOR FURNACES
IN-THE-WALL HEATERS
WATER HEATERS
RANGES
DRYERS
INCINERATORS

We install and service all types of gas equipment.

PHONE NO 5-6161
Gallup-Silkworth Co., Inc.
111 So. State St. Ann Arbor

HEADQUARTERS for "DO IT YOURSELF" materials

We're always interested in helping you with small projects—big ones too. Tell us what you have in mind—we'll help you to start.

DIAL GR 5-3391
"Where the Home Begins"

CHELSEA LUMBER CO.

Here's Your Once-in-a-Lifetime Chance to **SAVE BIG MONEY**

on famous **Porter-Cable** Quality **POWER TOOLS!**

SAVE 5.00 **All Purpose ELECTRIC HAND SAW** with Exclusive Orbital Action. REG. 54.95 **49.95**. Complete Kit... Reg. 59.95—Now! 54.95. Cuts lumber, plywood, laminated plastics and metal with greater ease and speed than any other comparable saw. Exclusive Orbital Action means that the blade teeth contact the work on the upstroke only... cuts 3 times faster, up to 30 times longer blade life.

SAVE 7.00 **The tool used most often 1/4" ELECTRIC DRILL**. REG. 26.95 **19.95**. This popular model with precision gear chuck, man sized pistol grip, trigger switch with lock button, self lubricating bronze bearings, and full 2300 RPM speed, can be yours at this low price!

NEW! Quality at a LOW PRICE! 6 1/2" POWER SAW Now Only **39.95**. New and Powerful! An excellent saw for the home-craftsman. Big motor performance plus all of Porter-Cable's advanced safety features! KickProof clutch, Safety Telescoping Guard to eliminate jamming, permanent self-lubricating bearings and instant depth and bevel adjustments. Try it for yourself!

MERKEL BROTHERS

For Transportation to the Polls on Election Day

Phone: GR 5-5511 or GR 9-7681

— Cast a Straight People's Party Ballot —

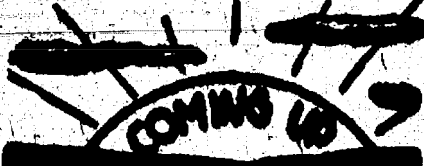
at the VILLAGE ELECTION MONDAY, MARCH 14

The Hi-Light

Edited by Students of the Chelsea High School Journalism Club

Co-Editors

Jill Barkley and Tassy Cavadas



March 11—Journalism dance, 7:30 to 11:00 p.m.

March 14—Senior class meeting.

March 15—Sophomore class ring committee.

March 16—PTA Cafeteria.

March 18—Freshman-sophomore dance, 7:30-11:00 p.m. All-hi after 9 p.m.

Journalism club wishes to invite all CHS, both junior and senior branches, to their dance to be held March 11, from 7:30 to 11:00. The prices will be 35 cents and 50 cents. Three committees were chosen: Linda Burghardt is in charge of publicity; David Lixey of cleanup; and decorations will be planned by chairman Barbara Lewis, aided by Nancy McCalla and Barbara Goforth.

Student Council activities for the week include approving two party plans. The senior class sponsored a dance last Saturday night after the tournament game. The French club will sponsor a dance April 20 with the prices being 25 cents and 35 cents.

The Hi-Ly club has decided to purchase a 210-lb. Healthway Barbell set for the use of the high school.

The boys also decided at their last meeting to hold a fun night at the end of the Lenten season at the YMCA either in Jackson or Ann Arbor.

Art I and II classes, under the direction of Mr. Hummell, are presently working on tinfoil designing. Tinfoil is stretched over a piece of cardboard and a design etched in. Classes had previously done tempera landscapes, and modern art pictures on poster board, some of which are displayed

in the school library. They have had art lectures and instruction on proportional drawing and have made book covers. Everyone enjoys working under the able guidance of Mr. Hummell.

Chelsea Band members went to Manchester Saturday evening, Feb. 27, to join the Dexter and Manchester bands in a preview for the contest which was held March 5 at Chelsea. Each band played their required numbers and then combined into a mass band for several numbers. The mass band was conducted by Dr. George Wilson, who also acted as their judge and critic and instructor.

The preceding Wednesday the band had given a morning concert at Dexter, lunch at Dexter, and had given an afternoon concert at Pinckney. In each case they heard their host band, met the players, got some pointers. At both places Charles Cameron won hearty acclaim for his baritone solo "Beautiful Colorado," as did the ensembles at Dexter the brass sextet, and at Pinckney clarinet quartet No. 1.

On Tuesday, March 1, Dexter band came to Chelsea to practice in the room where the Saturday contest would be held and to give CHS a short assembly program. Several beautiful numbers were played.

Movies have been somewhat neglected lately. PTA members saw a film about teaching as an occupation; biology saw one suitable to their course of study; social science classes saw "Red Nightmare" about the growth of Communism in Europe.

Seventh graders have been working hard so far to try to improve their marks over last semester. In English they have been practicing oral demonstrations and speeches, to get used to talking before groups.

Chorus has been working on folks songs, which they greatly enjoy. Several people are still struggling to make select choir.

Junior High Journalism has the universal difficulty—assignments are hard to get in, especially "in" on time.

Rocket Club now has nine members—Danny Kephart, who was recently elected president; Roy Lange, George Gary, Gregory Kuhl, Mike Shepherd, Lanny Carr, Gary Cook, and Kenny Rhinehart. They have used their collected dues to buy a model rocket which they plan to fire some time next summer. George Gary is the treasurer.

Eighth grade called a reluctant halt to basketball season. They had 3 victories, 6 losses, and a cancellation when they finally turned in their suits to Coach John McGill.

Juniors announce the presentation of their annual play "The Great Big Door Step" on April 8 and 9. The play was selected by a student committee. Rehearsals were held March 1, and a committee headed by Mrs. Finch, the

director, chose a cast which includes Mary Jane Harris, Judy Sner, Eddie Brown, Peter Flintoff, Carol Cameron, Danny Mayer, Lynn Lipphart, Carolyn Miller, Ed Lauhom, Sue Eisenbeiser, Marketa Young, and George Kleis.

Sophomores are happy to report that the first two gross of cans of chocolate covered almonds and chocolate covered pecans are selling very well. They expect to reorder so that none may be disappointed.

LEARNING BY DOING 4-H CLUB
Learning By Doing 4-H club members, at their regular meeting Saturday, March 6, made plans for a dress revue to be held at the home of their leader, Mrs. Lewis Haselesworth, at 3 o'clock Saturday, March 12. Mothers of club members have been invited to be guests at the revue.

Also invited are home economics teachers of Chelsea and Dexter high schools and the Washtenaw county home extension club agent, Mrs. Anna Brown.

Saturday's meeting was held at the home of Carol and Laurie Reddeman.

The two hostesses served refreshments at the close of the meeting.

CAT TALE
Nantwich, England—The congregation of the old parish church in Nantwich has one member that is not human—a cat named Holy Joe.

After the church bells peal on the Sabbath, the big white-and-black cat is usually the first to arrive for services. He never misses a Sunday service and often turns up for funerals, too.

(Political Advertisement)

VOTE INDEPENDENT



DONALD BALDWIN

For Trustee
Lives at 1023 Freer Road. Married. Attended Eastern Michigan College. Has been employed at Rockwell-Standard Corp. for the past 10 years. Don is a past master of the Masons, active in the Boy Scouts and the Methodist Church, Kiwanis Club, Community Chest and the American Society for Personnel Administration.

Vote Independent Ticket at Village Election
Monday, March 14

Rural Correspondence

• Items of Interest About People You Know •

SALEM GROVE

Mr. and Mrs. Kenneth Proctor were Sunday callers of her mother, Mrs. George Bennett in Northville. They also attended a birthday party for Russell Proctor at the home of Mr. and Mrs. Russell Proctor in Livonia.

Mr. and Mrs. James Beal and family, of Saline, were Sunday evening supper guests of her parents, Mr. and Mrs. Oscar Kalmbach.

Sunday dinner guests of Mr. and Mrs. Fred Layher and Mr. and Mrs. Charles Lindstrom of Ypsilanti, Mr. and Mrs. Richard Layher and children, of Ann Arbor, and Mr. and Mrs. Duane Layher and children. The group enjoyed tobogganing during the afternoon.

UNADILLA

The Women's Missionary Society met Wednesday with Mrs. Eratton Clarke.

Jack and Kent Pickett were Sunday dinner guests of Mrs. Jennie Pickett.

Mr. and Mrs. Charles Sullivan and family were Sunday visitors of Mr. and Mrs. Clara Barnum.

Mr. and Mrs. Otto Brooks of

Garden-City

were Sunday dinner guests of Mr. and Mrs. Ralph Wright.

The Father and Son banquet will be held at the Unadilla Memorial Hall Saturday evening, March 12 at 7:00.

Faye Roepeke of Santa Barbara, Calif., spent a week ago last Saturday with his parents, Mr. and Mrs. Barney Roepeke.

Mr. and Mrs. Barney Roepeke attended the 20th wedding anniversary. Sunday of Mr. and Mrs. Carl Heminger. Mrs. Roepeke's niece, in Perry.

Officers and teachers of the Sunday school attended a meeting at the Calvin West Presbyterian church in Detroit, Monday evening.

Mr. and Mrs. Edwin Corser called Sunday on Mr. and Mrs. Wilson Scott in Saline.

Mr. and Mrs. Edwin Corser are the owners of a new Ford station wagon.

CAVANAUGH LAKE

Mr. and Mrs. Jerry Ball, Mr. and Mrs. Jerry Lesser and Mr. and Mrs. Melvin Lesser, all of Munith, George Steele and John Steele, Jr., of Chelsea, were Sunday dinner guests of Mr. and Mrs. Emerson Lesser.

LIMA TOWNSHIP

Mr. and Mrs. J. C. Bradbury and daughter, Patty, were Sunday dinner guests of their son-in-law, and daughter, Mr. and Mrs. Rolano Eder.

Mr. and Mrs. John McClain of Saline were Sunday afternoon callers of Mrs. Anna Reichert.

Mrs. Amanda Schiller of Chelsea was a Sunday afternoon and evening caller of Mr. and Mrs. Albert Schiller.

Mrs. Harry White and Miss Katherine Miller, of Ann Arbor, were Sunday afternoon callers of their mother, Mrs. Caroline Miller.

Mr. and Mrs. Fritschaff Salinas of Saginaw were Saturday afternoon and evening callers of their mother, Mrs. Caroline Miller.

Mr. and Mrs. Ernest Wilcox of Saginaw were Saturday visitors at the H. G. Gage home. Saturday evening callers were Mr. and Mrs.

Don Labo of Flint, and Mr. and Mrs. Elba Gage of Chelsea.

Mr. and Mrs. Jack Bradbury attended the wedding and reception Saturday evening at Edwin Coy and Frances Visel at St. Paul's church, in Saline.

Sunday afternoon visitors of Mrs. Edward W. Kipfmiller were her mother-in-law, Mrs. Edward J. Kipfmiller, and her parents, Mr. and Mrs. Harry Cole.

Sunday visitors of Mr. and Mrs. H. G. Gage and family were Fred White, Arthur Sias, Mr. and Mrs. Ed. Eastorle and Mr. and Mrs. Al-

ton Schneider, all of Dexter.

Mr. and Mrs. Charles Schneider and Mr. and Mrs. Reuben Schneider attended the Builders' Banquet in Detroit on Sunday.

ROGERS CORNERS

Mr. and Mrs. Theodore Tish Dexter were Sunday afternoon callers of his sister, Miss Linda Tish.

They get around: Butcher Dexter were Sunday afternoon callers of his sister, Miss Linda Tish.



Firestone CHAMPION TIRES

SIZE	BLACK	WHITE
6.00-16	11.95	12.95
6.70-16	12.95	13.95
7.10-16	14.95	15.95
7.00-15	10.95	11.95

*plus tax and responsible tire

Balmer's Brake Service

140 West Middle St.

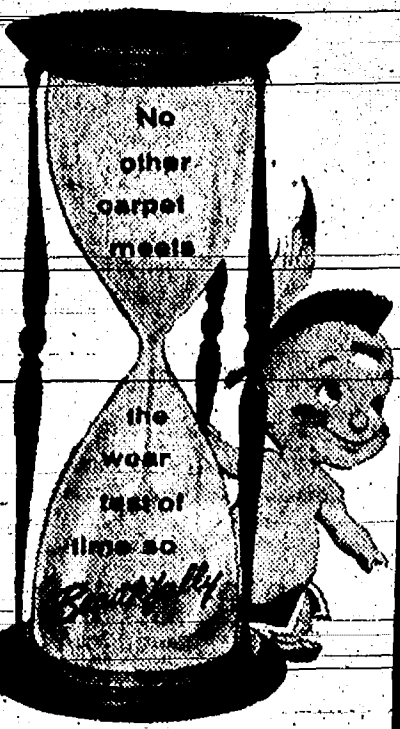
Phone GR 5-5131

GO GO GO SEE A BIG MOVIE
PATRONIZE YOUR LOCAL THEATRE



Spans the miles like a map
MARATHON SUPER-M® GASOLINE
Marathon goes farther to make friends

You Can Get Fine Marathon Products and Services at This Station:
DETLING'S MARATHON SERVICE PHONE GR 5-7881
Corner South Main and Old US-12



Mohawk's FABULOUS

Trendtex
U. S. Patent No. 2,531,716



Dense All-Wool Pile

As little as \$10.00 a month carpets 3 average rooms wall-to-wall. Price includes carpet, carpet cushion and COMPLETE INSTALLATION.

ONLY \$119.00 for 9x12 Room Size

JUST \$9.95 per sq. yd.

MERKEL BROS.



FREE HOME TRIAL

TRY THE ALL NEW
Sunbeam DUAL DELUXE VACUUM CLEANER

Big 1 1/2 horsepower Sunbeam Quality-built motor
14 1/2" in diameter—ONLY 7 1/2" high
Rugged construction yet weighs only 16 lbs.
Rolls on large wheels set in a wide-track design. Never tips or catches door sills or rugs.

• POWERFUL • COMPACT • EASY-TO-USE • LIGHTWEIGHT

SUNBEAM TURBINE BRUSH
Makes your Sunbeam Dual Deluxe Vacuum Cleaner a powered brush upright. Cleans rugs and carpets with revolving brush thoroughness.

MERKEL BROS.

VILLAGE OF CHELSEA AUDIT REPORT

December 31, 1959

Honorable, the Village Council
of Chelsea, Michigan
We have examined the statement of financial condition of the Village of Chelsea as of December 31, 1959, and the related statement of receipts and disbursements for the year then ended. Our examination was made in accordance with generally accepted auditing standards and such other auditing procedures as we considered necessary in the circumstances.

In our opinion, the accompanying statements of financial condition and statement of receipts and disbursements present fairly the financial condition of the Village of Chelsea at December 31, 1959, and the results of its operations for the year then ended, in conformity with generally accepted governmental accounting principles applied consistently with that of the preceding year.

Very truly yours,
Iceman, Johnson & Hoffman

COMMENTS
STATEMENT OF FINANCIAL CONDITION (Exhibit A)
Unpaid property taxes at December 31, 1959, amounted to \$787, representing \$361 due for 1959 and \$426 due from prior years. Special assessments unpaid at December 31, 1959, amounted to \$1,446. Of this amount, \$939 represented 1959 unpaid assessments and \$507 represented unpaid assessments from prior years.
The amount of the 1959 tax levy for the Chelsea Public Library was \$2,300. This amount was paid by two warrants drawn on the Chelsea State Bank on January 1, 1960.
An amount of \$60 is due from Waterloo Township on the Civil Defense contract.
In August, the electorate approved the issuance of \$235,000 in bonds for the sewerage disposal improvement bonds. The bonds, dated October 1, 1959, will be repaid over a 27 year period by sewerage revenues.
In addition to the assets of the Capital Fund was a Civil Defense Radio in the amount of \$1,812 purchased for the Fire Department. The total cost of the radio equipment was \$2,624 with the balance of government paying 50% or \$1,312. The remaining additions to the Public Works Equipment Fund.
The Parking Meter Fund repaid the Electric and Water Department \$4,000 on the Foster property. In addition \$207 was expended on improvements to parking facilities.
The Fire Truck Fund received \$1,000 from the General Fund as interest from the Chelsea State Bank.
The Public Works Equipment Fund received \$2,000 from the Chelsea State Bank. On August 3, 1959, a 1959 Chevrolet Truck was purchased for \$4,244. A dump unit was added to the 1959 truck on September 1, 1959 for \$1,303. On November 4, 1959, a snow-plow was purchased for \$1,017. These purchases were added to the Capital Fund.

RECEIPTS AND DISBURSEMENTS (Exhibits B and C)
During 1959, General Fund receipts totaled \$158,674, while disbursements totaled \$157,851, resulting in a net increase of \$823 in cash balance. Receipts included transfers of \$35,000 from the Electric and Water Department and a reimbursement for employee benefits of \$5,300 from the Electric and Water Department. Collections of 1959 property taxes amounted to \$56,270, representing 83.3% of the total assessments. A comparison of the actual receipts and disbursements with the budgeted amounts is presented in Exhibit D.

EXHIBIT A—VILLAGE OF CHELSEA STATEMENT OF FINANCIAL CONDITION DECEMBER 31, 1959

ASSETS

Cash in Chelsea State Bank	\$ 2,294.00
Real property, 1959	\$ 351.00
Real property, 1958	\$ 210.00
Real property, 1957	\$ 208.00
Special assessments	\$ 1,446.00
Accounts receivable, fire service:	
Waterloo Township	\$ 100.00
Lyndon Township	\$ 200.00
Saron Township	\$ 270.00
Silver Township	\$ 2,000.00
Accounts receivable, other:	
Waterloo Township on Civil Defense contract	\$ 50.00
TOTAL—GENERAL FUND	\$ 7,127.00

LIABILITIES AND MUNICIPAL EQUITY

General Fund	\$ 1,435.00
Fire fighting equipment	\$ 4,017.00
Automotive equipment (Schedule A-1)	\$ 46,170.00
Municipal building, original cost and improvements	\$ 58,229.00
Municipal building, furniture and equipment	\$ 2,565.00
Office equipment	\$ 202.00
TOTAL—CAPITAL FUND (Note B)	\$112,618.00
Fire Truck Fund	\$ 7,564.00
Property and improvements	\$ 15,814.00
Parking meters	\$ 8,142.00
TOTAL—PARKING METER FUND	\$ 31,520.00
Truck Fund	\$ 5,215.00
Cash in Chelsea State Bank	\$ 988.00
Public Works Equipment Fund	\$ 988.00
Cash in Chelsea State Bank	\$ 988.00

Note A—The general fund cash deficit amounted to \$3,880, the excess of current liabilities over cash.
Note B—Assets of the Chelsea Electric and Water Department are not in the Capital Fund. They are included in a separate audit report for that department.

LIABILITIES AND MUNICIPAL EQUITY

Accounts payable	\$ 6,174.00
Represented by cash (Note A)	\$ (3,880.00)
Represented by taxes	\$ 787.00
Represented by special assessments	\$ 1,446.00
Represented by receivable fire service	\$ 2,570.00
Represented by accounts receivable	\$ 60.00
TOTAL—GENERAL FUND	\$ 7,127.00
Capital Fund	\$112,618.00
Municipal equity represented by land	\$112,618.00
TOTAL—CAPITAL FUND	\$112,618.00
Fire Truck Fund	\$ 7,564.00
Property and improvements	\$ 15,814.00
Parking meters	\$ 8,142.00
TOTAL—PARKING METER FUND	\$ 31,520.00
Truck Fund	\$ 5,215.00
Public Works Equipment Fund	\$ 988.00
Cash in Chelsea State Bank	\$ 988.00

SCHEDULE A-1—VILLAGE OF CHELSEA CAPITAL FUND—AUTOMOTIVE EQUIPMENT DECEMBER 31, 1959

1959 Chevrolet truck	\$ 3,105.00
1959 Chevrolet truck	\$ 5,000.00
1959 Chevrolet truck	\$ 1,087.00
1959 Chevrolet truck	\$ 411.00
1959 Chevrolet truck	\$ 544.00
1959 Chevrolet truck	\$ 10,730.00
1959 Chevrolet truck	\$ 2,587.00

C. I. tractor with back hoe	\$ 3,881.00
Hydro-power sweeper	\$ 3,771.00
Hydraulic scraper	\$ 1,541.00
Chevrolet pick-up truck	\$ 1,839.00
Cement mixer	\$ 800.00
1959 Chevrolet truck	\$ 2,424.00
Dump unit for 1959 Chevrolet truck	\$ 1,303.00
Snow plow	\$ 1,017.00
TOTAL (Exhibit A)	\$ 46,170.00

EXHIBIT B—VILLAGE OF CHELSEA GENERAL FUND STATEMENT OF RECEIPTS AND DISBURSEMENTS YEAR ENDED DECEMBER 31, 1959

Receipts:	
Taxes:	
Property, current year including penalties, fees, and excess of roll	\$ 56,270.00
Property, delinquent	\$ 1,188.00
Special assessments	\$ 1,267.00
Special assessments, delinquent	\$ 1,748.00
Interest	\$ 45.00
TOTAL RECEIPTS	\$ 60,520.00

Disbursements:	
Transfer from Chelsea Electric and Water Department	\$ 35,000.00
Transfer from Chelsea Electric and Water Department Fringe Benefits	\$ 5,800.00
Rural fire service	\$ 5,415.00
Maintenance of state highway	\$ 2,190.00
Village share of state licenses and fees:	
Intangibles tax	Note A
Licenses	Note A
Sales tax	\$ 21,000.00
Weight and gasoline tax	\$ 22,500.00
Local licenses and permits	\$ 819.00
Law enforcement:	
Traffic violations	\$ 1,789.00
Deputy sheriff fees	\$ 272.00
Miscellaneous:	
Property owners reimbursement	\$ 1,170.00
Refunds from vendors	\$ 604.00
Civil defense radio fees	\$ 600.00
Rent, trailer camp	\$ 597.00
Gasoline tax refunds	\$ 386.00
Reimbursement from parking meter fund	\$ 350.00
Other	\$ 183.00
TOTAL DISBURSEMENTS	\$158,074.00
Total cash disbursements (Schedule B-1)	\$157,851.00

Excess of receipts over disbursements	\$ 823.00
Cash, Chelsea State Bank, January 1, 1959	\$ 1,471.00
Cash, Chelsea State Bank, December 31, 1959	\$ 2,294.00

Note A—The Village share of the state intangibles tax and beer licenses was not received during 1959.

SCHEDULE B-1—VILLAGE OF CHELSEA GENERAL FUND—DISBURSEMENTS YEAR ENDED DECEMBER 31, 1959

Salaries	Material	Wages	Supplies	Other	Total
Administration:					
General	\$ 5,940.00	\$ 250.00			\$ 6,190.00
Legal and auditing					\$ 827.00
Services of Chelsea					\$ 1,028.00
Protection:					\$ 31,512.00
Police	\$ 19,143.00	\$ 90.00			\$ 19,233.00
Auto operation					\$ 3,705.00
Fire	\$ 5,101.00	\$ 42.00			\$ 5,143.00
Vehicle operation					\$ 440.00
Equipment					\$ 1,312.00
Transfer to Fire					\$ 1,000.00
Public works:					\$ 78,418.00
Streets and curbs					\$ 84,722.00
Flynn Contracting					\$ 80.00
George's Tree					\$ 1,427.00
Service					\$ 3,186.00
B. Kurzy					\$ 2,889.00
T. Merkel & P. B. Dreau Contracting					\$ 2,868.00
Other	\$ 25,587.00	\$ 5,710.00			\$ 31,297.00
Auto operation					\$ 2,868.00
Transfer to Public Works:					\$ 2,000.00
Equipment Fund					\$ 4,888.00
Street lighting					\$ 4,798.00
Sidewalks					\$ 4,598.00
Earl Schultz					\$ 113.00
P. Kurzy					\$ 149.00
Other					\$ 569.00
Supplies					\$ 238.00
Other					\$ 4,116.00
Insurance					\$ 7,788.00
Health:					\$ 7,788.00
Garbage and rubbish removal					\$ 2,971.00
Municipal building operation					\$ 14,992.00
Other:					\$ 4,350.00
Chelsea Public Library taxes					\$ 1,088.00
Building inspector fees					\$ 1,205.00
Miscellaneous					\$ 2,184.00
Social security					\$ 5,238.00
State of Michigan Em.					\$ 232.00
Police Pension plan					\$ 153.00
Parks					\$ 153.00
Library					\$ 153.00
TOTALS	\$55,771.00	\$ 6,092.00	\$98,440.00	\$160,303.00	

Increase in accounts payable:

Accounts payable, December 31, 1959	\$ 6,174.00
Accounts payable, January 1, 1959	\$ 8,723.00
TOTAL	\$ 2,452.00

EXHIBIT C—VILLAGE OF CHELSEA PARKING METER, FIRE TRUCK AND PUBLIC WORKS EQUIPMENT FUNDS STATEMENT OF RECEIPTS AND DISBURSEMENTS YEAR ENDED DECEMBER 31, 1959

Receipts:	
Parking Meters	\$ 7,210.00
Disbursements:	
Payment of Electric and Water Department	\$ 5,000.00
Foster property	\$ 207.00
Parking lot improvements	\$ 300.00
New York Central R. R.—lease	\$ 306.00
Parking meter maintenance	\$ 18.00
Parking lot maintenance	\$ 50.00
Chelsea State Bank—counting receipts	\$ 5,881.00
Total disbursements	\$ 11,357.00

Excess of receipts over disbursements

Cash, Chelsea State Bank, January 1, 1959	\$ 1,329.00
Cash, Chelsea State Bank, December 31, 1959	\$ 8,238.00
Cash, Chelsea State Bank, December 31, 1959	\$ 7,564.00

FIRE TRUCK FUND

Receipts:	
Transfer from General Fund	\$ 1,000.00
Interest	\$ 58.00
TOTAL RECEIPTS	\$ 1,058.00
Disbursements	\$ 0.00
Excess of receipts over disbursements	\$ 1,058.00

Cash, Chelsea State Bank, January 1, 1959	\$ 4,122.00
Cash, Chelsea State Bank, December 31, 1959	\$ 5,215.00

PUBLIC WORKS EQUIPMENT FUND

Receipts:	
Transfer from General Fund	\$ 2,000.00
Disbursements—purchase of equipment	\$ 5,012.00
Excess of disbursements over receipts	\$ (3,012.00)
Cash, Chelsea State Bank, January 1, 1959	\$ 4,000.00
Cash, Chelsea State Bank, December 31, 1959	\$ 988.00

EXHIBIT D—VILLAGE OF CHELSEA GENERAL FUND—BUDGET COMPARED WITH ACTUAL RECEIPTS AND DISBURSEMENTS YEAR ENDED DECEMBER 31, 1959

	Budget	Actual	Over (Under)
Receipts:			
Cash in bank, January 1, 1959	\$ 1,471.00	\$ 1,471.00	\$ 0.00
Taxes:			
Current	\$ 56,000.00	\$ 56,270.00	\$ 270.00
Delinquent	\$ 0.00	\$ 1,188.00	\$ 1,188.00
Special assessments	\$ 3,000.00	\$ 3,010.00	\$ 10.00
Interest and penalties	\$ 0.00	\$ 45.00	\$ 45.00
Electric and Water Dept. (Note A)	\$ 35,000.00	\$ 40,300.00	\$ 5,300.00
Rural fire service	\$ 5,000.00	\$ 5,415.00	\$ 415.00
Maintenance of state highway	\$ 2,000.00	\$ 2,190.00	\$ 190.00
Village share of state taxes	\$ 47,000.00	\$ 43,500.00	\$ (3,500.00)
Local licenses	\$ 600.00	\$ 819.00	\$ 219.00
Law enforcement	\$ 2,500.00	\$ 2,080.00	\$ (420.00)
Miscellaneous (Note B)	\$ 2,000.00	\$ 3,870.00	\$ 1,870.00
Library refund—1958	\$ 0.00	\$ 0.00	\$ 0.00
TOTALS	\$154,471.00	\$160,145.00	\$ 5,674.00

Disbursements:			
Administration	\$ 10,000.00	\$ 10,828.00	\$ 828.00
Police	\$ 20,000.00	\$ 23,438.00	\$ 3,438.00
Fire	\$ 8,000.00	\$ 6,782.00	\$ (1,218.00)
Public works:			
Streets and curbs	\$ 77,000.00	\$ 81,228.00	\$ 4,228.00
Sidewalks	\$ 5,000.00	\$ 4,798.00	\$ (202.00)
Sewers	\$ 2,000.00	\$ 728.00	\$ (1,272.00)
Garbage collection	\$ 7,687.00	\$ 7,788.00	\$ 101.00
Parks	\$ 5,000.00	\$ 252.00	\$ (4,748.00)
Equipment Fund	\$ 2,000.00	\$ 2,000.00	\$ 0.00
Tree trimming	\$ 1,500.00	\$ 80.00	\$ (1,420.00)
Insurance	\$ 3,500.00	\$ 4,118.00	\$ 618.00
Municipal building operation	\$ 1,500.00	\$ 2,971.00	\$ 1,471.00
Other	\$ 7,000.00	\$ 9,790.00	\$ 2,790.00
Library	\$ 4,350.00	\$ 4,350.00	\$ 0.00
Civil defense	\$ 1,000.00	\$ 1,312.00	\$ 312.00
Increase in payables	\$ 0.00	\$ (2,452.00)	\$ (2,452.00)
Cash on hand, December 31, 1959	\$ 3,434.00	\$ 2,294.00	\$ (1,140.00)
TOTALS	\$154,471.00	\$160,145.00	\$ 5,674.00

Note A—The amount of \$40,300 represents transfers to the General Fund from the Electric and Water Department of \$35,000 from operations and \$5,300 for reimbursement of fringe benefits paid by the general fund. A separate audit report for the utility has been submitted.

Note B—For details of the amount \$3,870, see Exhibit B.

CHS Students . . .

(Continued from page nine)
Each finalist in addition to being considered for a scholarship is awarded a Certificate of Merit attesting to his outstanding performance.
Four-year scholarships are awarded to the winners with stipends depending on financial need. Minimum award in 1961 will be \$100, the maximum will be \$1,500. The average stipend in 1959 was \$743. Supplementary cost-of-education grants are usually made to the colleges and universities which the scholars attend.
An additional 25,000 students selected without regard to state quotas are awarded letters commending them for their superior performance on the National Merit Scholarship Qualifying Test. These students are asked to complete brief personal data cards, and are considered for special awards made through the facilities of NMSC. Names along with test scores of both semifinalists and the students in the commended group will be sent without charge to the colleges indicated as either a first or second choice by the participant.
The National Merit Scholarship Program is a nationwide search for students who demonstrate extraordinary ability to benefit from a college education. More than a

FOREIGN AID

The Administration has decided to increase aid to India by at least 50 per cent and probably more.
It has decided also to make a significant increase in aid for Pakistan and is considering more help for Taiwan, conditioned upon the willingness of the Chiang Kai-shek Government to adopt certain measures.

LIKE SCORES GENERALS

President Eisenhower has termed "parochial" the views of generals who say "the bosses know nothing about it."
The President's rebuke was delivered at a recent news conference. He was commenting on the renewed appeal by Gen. Thomas S. Power, head of the Strategic Air Command, for the airborne alert plan that the Administration has rejected.

VOTE INDEPENDENT

(Political Advertisement)

Basement Pipes RUSTY?

Don't let rusty pipes destroy the appearance of your basement! Brush Rust-Oleum 769 Damp-Proof Red Primer right over those rusty pipes—after wirebrushing rust scale and loose rust away! Use Rust-Oleum aluminum, black, gray, green or other attractive Rust-Oleum finish colors to beautify as you protect! Ask us for Rust-Oleum, today!

RUST-OLEUM STOPS RUST!

Don't let rusty pipes destroy the appearance of your basement! Brush Rust-Oleum 769 Damp-Proof Red Primer right over those rusty pipes—after wirebrushing rust scale and loose rust away! Use Rust-Oleum aluminum, black, gray, green or other attractive Rust-Oleum finish colors to beautify as you protect! Ask us for Rust-Oleum, today!

MABEL FOX For Library Board

Lives at 216 Jefferson Street. Mabel has been a teacher at Chelsea High School for the past 21 years. A member of the First Methodist Church and Chairman of the Official Board of that church for the past 7 years. She is a life member of the Michigan Education Association, having held many offices in that organization. Mabel has been a member of the Library Board since 1945 and president of the board since 1959.

Vote Independent Ticket at Village Election

Monday, March 14

MERKEL BROS.

FINANCIAL REPORT OF THE MCKUNE MEMORIAL LIBRARY 1959-1960

Receipts:	
Balance on hand, Feb. 1, 1959	\$2,127.27
Received from:	
One mill tax	\$4,850.00
Townships	\$85.00
Lost books	\$22.00
Book fund	\$38.24
Fees	\$11.00
Fines	\$4

Services in Our Churches

CONGREGATIONAL CHURCH
The Rev. Philip Rusten, Pastor
Thursday, March 10—
4:00 p.m.—Junior choir rehearsal.
7:30 p.m.—Senior choir rehearsal.
Sunday, March 13—
10:00 a.m.—Worship service and church school.
Tuesday, March 15—
9:30 a.m.—Lenten study group. Chat'n'Seal to meet in evening at home of Mrs. Harold Knott.
Wednesday, March 16—
8:00 p.m.—Union-Lenten service. Congregational church, hosts. "My Faith and Hope." The Rev. Edwin J. Weiss, preacher.

ST. PAUL'S EVANGELICAL AND REFORMED CHURCH
The Rev. Paul M. Schnake, Pastor
Thursday, March 10—
8:00 p.m.—Study committee meeting at home of Charles Lancaster.
Sunday, March 13—
8:15 a.m.—First worship service.
9:30 a.m.—Second worship service.
2:30 p.m.—Men to leave for spring rally. Brotherhood at Bethlehem church, Ann Arbor. To be home again by 7:30 p.m.
Tuesday, March 15—
7:30 p.m.—Mission Circle at the home of Amanda Koch. Alma Messers, leader.

If it's a job for Bottled Gas IT'S A JOB FOR SHELLANE

Product of the Shell Oil Company

HILLTOP PLUMBING
BOB SHEARS
201 S. Main St. Ph. GR 5-7201

It pays for itself in 1 using!

THE REVOLUTIONARY NEW Shetland AUTOMATIC DISPENSING RUG-CLEANING FLOOR POLISHER
SCRUBBER • WAXER • BUFFER

A Completely Automatic Method of FLOOR & RUG CARE
\$29.95
THOUSANDS SOLD NATIONALLY THIS YEAR AT \$29.95
NOW SAVE 10
COMPLETELY with All Purpose Brush, Wool Pellet Buffer Pads, Rug Cleaning Unit and Automatic Liquid Shampoo. Sample Vanishing Foam Rug Shampoo.

AUTOMATICALLY DISPENSING RUG SHAMPOO
You can shampoo any 6 x 12 rug in less than one hour and for less than 50¢, with professional results. You can shampoo more than 100 rugs for the entire cost of the Shetland.

AUTOMATICALLY DISPENSING RUG WAX
Spreads on a thin, even coat of wax that is power polished, leaving a lasting six months finish which imbeds between rug fibers and keeps rug clean and sparkling.

AUTOMATICALLY DISPENSING RUG SOLUTION
Saves time, effort, power, glide no-scratch action removes old wax and dirt.

MERKEL BROS.

FIRST METHODIST CHURCH
The Rev. S. D. Kinde, Pastor
Thursday, March 10—
7:15 p.m.—Youth choir rehearsal.
8:00 p.m.—Senior choir rehearsal.
Sunday, March 13—
10:00 a.m.—Confirmation class in church office.
12:30 p.m.—Senior adult potluck dinner in the social center.
8:30 p.m.—Couples club bowling party. Social gathering at home of Mr. and Mrs. Dale Smith, 98 Cedar Lake.
Sunday, March 13—
10:00 a.m.—Nursery, kindergarten, primary and junior Sunday school departments.
10:00 a.m.—Worship service. Sermon topic: "Jesus Chose Thaddeus." Anthem by Junior choir.
11:00 a.m.—Fellowship coffee hour.
11:10 a.m.—Junior, senior and adult Sunday school departments.
5:30 p.m.—Confirmation class in church office.
6:00 p.m.—Senior high MYF.
6:00 p.m.—Junior high MYF.
Monday, March 14—
8:00 p.m.—Official Board.
Tuesday, March 15—
8:00 p.m.—Evening Philathea circle in social center. Hostesses: Mrs. J. Wilbur Smith, Co-hostess, Mrs. Kenneth McManis; program chairman, Mrs. Charles Cameron; devotional leader, Mrs. Arthur Schmuck. Guests will be members of Afternoon Philathea Circle.
Wednesday, March 16—
9:00 a.m.—Deborah Circle at the home of Mrs. William Marsh 312 Washington St. Mrs. William Storey, co-hostess. Mrs. Eldon Gorton, program chairman and Mrs. James Daniels, devotional leader.
Wednesday, March 16—
9:00 a.m.—Morning Philathea Circle in social center. Mrs. Guy Hulee and Mrs. Theodore Bahmiller, hostesses. Program chairman, Mrs. Harry Litteral; devotional leader, Mrs. Theodore Bahmiller.
12:30 p.m.—Afternoon Philathea circle at Methodist Home. Hostesses are members of the circle in the home. Chairman, Mrs. Edwin Weiss; devotional leader, Mrs. A. Value; program, Mrs. Walter Mohrlock.
8:00 p.m.—United Lenten service at First Congregational church. "My Faith and Hope." The Rev. Edwin J. Weiss, preacher.
Saturday, March 10—
8:30 p.m.—Mary Martha Circle to entertain husbands at a progressive dinner.

ST. BARNABAS' EPISCOPAL CHURCH
Old US-12, Community Fairgrounds
The Rev. Allan W. Reed, Vicar
Thursday, March 10—
6:15 p.m.—Bishop's Lenten program at St. Andrew's Episcopal church, Ann Arbor.
Sunday, March 13—
11:00 a.m.—Morning prayer, sermon and church school.
Wednesday, March 16—
8:00 p.m.—Lenten service—"My Faith and Hope." First Congregational church, The Rev. Edwin J. Weiss, preacher.

ST. MARY'S CATHOLIC CHURCH
The Rev. Fr. Leo Laige, Pastor
Sunday, March 13—
8:00 a.m.—First Mass.
10:00 a.m.—Second Mass.
ASSEMBLY OF GOD CHAPEL
1164 1/2 South Main Street
The Rev. H. J. Moppell, Pastor
Sunday, March 13—
10:00 a.m.—Sunday school.
11:00 a.m.—Morning worship.
Tuesday—
7:45 p.m.—Prayer meeting in chapel.

CHURCH OF CHRIST
M-92 1/2 Mile South of Old US-12
Stanley Hudgins, Minister
Sunday, March 13—
10:00 a.m.—Sunday school and Bible study.
11:00 a.m.—Morning worship.
8:00 p.m.—Evening worship service.
Thursday Evening—
7:30 p.m.—Bible study. The Bible is our guide to heaven. Come study it with us.

UNADILLA PRESBYTERIAN CHURCH
The Rev. William Tauch, Pastor
Sunday, March 13—
10:30 a.m.—Morning worship.
11:30 a.m.—Sunday school.
NORTH SHARON COMMUNITY BIBLE CHURCH
The Rev. Richard Doot, Pastor
Sunday, March 13—
9:45 a.m.—Morning school.
10:45 a.m.—Sunday school.

WATERLOO VILLAGE CHURCH
(Evangelical United Brethren)
The Rev. Dale Ferris, Pastor
Friday, March 11—
7:30 p.m.—Local conference, the Rev. Leisner, district superintendent in charge. Also meeting of pastor-parish committee—Wilbur Beeman, Virginia Walter and Annabelle Woolley of Village church. Will Parks and Jennie McGuffie of North church.
Sunday, March 13—
10:00 a.m.—Sunday school.
11:15 a.m.—Morning worship. Nominating committee for election of officers—Leigh Beeman, Mrs. George Pluck and Mrs. Annabelle Woolley.

ST. JOHN'S EVANGELICAL AND REFORMED CHURCH
(Rogers Corners)
The Rev. Donald H. Voss, Pastor
Sunday, March 13—
9:45 a.m.—Sunday school.
11:00 a.m.—Morning worship followed by carry-in dinner and council meeting.
Thursday, March 17—
7:30 p.m.—Lenten service.

NORTH LAKE METHODIST CHURCH
The Rev. Harry Pyscher, Pastor
Sunday, March 13—
10:30 a.m.—Worship service.
10:30 a.m.—Sunday school.
GREGORY BAPTIST CHURCH
The Rev. W. T. Cochran, Pastor
Sunday, March 13—
10:00 a.m.—Morning worship.
11:15 a.m.—Sunday school.
6:45 p.m.—Training Union.
8:00 p.m.—Evening worship.

SALEM GROVE METHODIST CHURCH
US-12 at Notten Road
The Rev. Harry Pyscher, Pastor
Sunday, March 13—
10:00 a.m.—Sunday school.
11:15 a.m.—Morning worship.

COMPLETE building service
DIAL GR 5-3397
Chelsea Lumber Co.

CHELSEA BAPTIST CHURCH
Wilkinson Street
The Rev. David A. Wood, Pastor
Sunday, March 13—
10:00 a.m.—Sunday school.
11:00 a.m.—Morning worship.
6:30 p.m.—Young people's meeting.
7:30 p.m.—Evening service.
GALILEAN BAPTIST MISSION
Lima Center Hall, Lima Center
The Rev. W. W. Wenzel, Pastor
Sunday, March 13—
10:00 a.m.—Worship service.
11:00 a.m.—Sunday school.
7:30 p.m.—Evening service. Midweek services each Wednesday at 8 p.m.

BETHEL EVANGELICAL AND REFORMED CHURCH
(United Church of Christ)
Freedom Township
The Rev. T. W. Wenzel, Pastor
Sunday, March 13—
9:11:30 a.m.—Confirmation class.
Sunday, March 13—
10:00 a.m.—Worship service.
11:00 a.m.—Sunday school.
3:00 p.m.—Men's meeting at Bethlehem church, Ann Arbor.
Wednesday, March 16—
8:00 p.m.—Lenten service. The Rev. Donald Eaton of Dexter to be guest speaker.

ST. JOHN'S EVANGELICAL AND REFORMED CHURCH
(United Church of Christ)
(Francisco)
The Rev. Donald H. Voss, Pastor
Sunday, March 13—
9:30 a.m.—Morning worship.
10:30 a.m.—Sunday school.
Wednesday, March 16—
7:30 p.m.—Lenten service.

ZION LUTHERAN CHURCH
(Rogers Corners)
The Rev. C. J. Renner, Pastor
Thursday, March 10—
8:00 p.m.—Brotherhood meeting. Film strip: "Two Island churches," in addition to a special feature. Saturday, March 12—
9:30 a.m.—Junior catechism class.
10:45 a.m.—Senior catechism class.
Sunday, March 13—
9:05 a.m.—Sunday school and special showing of film strip: "Two Island Churches."
10:30 a.m.—Morning Worship. Sermon topic: "Christian Living."
7:00 p.m.—Adult instruction class.
Monday, March 14—
8:00 p.m.—Junior choir rehearsal.

FIRST CHURCH OF CHRIST SCIENTIST
1885 Washtenaw Ave., Ann Arbor
Sunday, March 13—
9:30 a.m.—Sunday school.
11:00 a.m.—Morning worship. Lesson-sermon: "Substance."

A Russian scientist recently dug through 60 feet of ice in Siberia, and found a stable made of logs hewn by crude axes, containing the well-preserved bodies of 10 horses, saddled and bridled.

34 Years Ago...
(Continued from page ten)
zier's Drug Store, installed in 1883 through the efforts of George F. Glazier. Present operators and personnel of the telephone company are Gladys Klumpp, Clara Hutzel, Margaret and Norma Schiller, Beatrice Avery, Edna Harrison, Inez Bagge and Jennie Walker.
Adolph Duerr has purchased the C. E. Bowen home on East street. As of March 1, substantial reductions in both water and power rates went into effect as a result of recommendations made by the village council at the March 11 meeting.

SUBSCRIBE TODAY TO THE CHELSEA STANDARD!

ONE-PACKAGE POLICIES

In homeowners' and comprehensive insurance with full coverage, including personal liability and medical expenses, available at a saving to you; also, sickness and accident policies.

Phone GR 5-5181

MARTIN E. MILLER
522 McKinley St.
CHELSEA MICH.

FREE INSTALLATION
TIRES, BRAKES, MUFFLERS, SHOCKS AND COMPLETE EXHAUST SYSTEM
B & T SALES & SERVICE
QUALITY IS OUR FIRST INTEREST AT THE BEST PRICES
OUR TIRES AND MUFFLERS CARRY A WRITTEN LIFE-TIME GUARANTEE
10% Discount Given with Ad Clipping
318 N. First St., Ann Arbor Phone NO. 5-7604, Nights 3-044

For a Complete Line of

DEPENDABLE FERTILIZERS
Enrich your soil with quality Farm Bureau Fertilizer. Place your order now.

FARMERS' SUPPLY CO.
ANTON NIELSEN — SEEDS, FEEDS, FERTILIZER
DAIRY AND POULTRY EQUIPMENT
ACROSS FROM DEPOT — PHONE GR 5-5511 CHELSEA

Gambles
The Friendly Store

from the Office of the President

WE'RE CELEBRATING OUR 100th ANNIVERSARY...

Sixty-five years too soon so we can bring you our 100 Best Buys!

In the year 2025 Gamble Stores will be 100 years old. That's 65 years from now. How can we celebrate our 100th Anniversary when actually we are only 35 years old?

Well, why not? In the year 2025, we are not likely to be here — many of the people among our suppliers probably won't be here — and most important of all, many of our good customers may not be here, either! So why not do it now so we can all enjoy it? Why not bring to you these tremendous values while you are here to take advantage of them?

Zany, you say? Well, yes, it probably is. But the more we thought about it, the more plausible the whole idea seemed.

Our buyers liked it. They said, "If the company celebrates our 100th Anniversary in 1960, we'll find 100 of the most outstanding merchandise values this nation has ever seen."

And that was the birth of the "Big 100." Beginning this week, and throughout the year, Gambles will offer 100 special items ranging in price from 17¢ to \$479.95. And they will far outdo anything we have ever presented in our entire 35 year history.

Our buyers did a grand job. Several went overseas to find "Big 100" items. When we approached the Presidents of our regular suppliers — with whom we have done many millions of dollars in business over many years — they said, "Your idea certainly is refreshing and maybe a little crazy, but let's go!"

The result — the "Big 100" — 100 items of merchandise we'll be extremely proud to show you. Never have we assembled so many outstanding values. Never has there been such an opportunity for our customers to save and save and save.

How did we do it? All these things helped to make the "Big 100" outstanding values:

We placed orders for many times normal quantities — this helped lower costs for our manufacturers, and assures enough merchandise for every customer.

We asked our manufacturers to go to their suppliers to help lower prices.

We agreed with our sources to off-season production, and this helped save money.

We're making great savings in distribution by shipping by carload and trainload and thus bringing merchandise more directly to you.

For example, we ordered 30 trainloads (20 to 25 cars each) of two-door combination freezer-refrigerators. These quantities enable us to offer unbelievably low prices and in addition to this, we will buy your present refrigerator. This means that you too can own one of these beautiful, convenient Coronado freezer-refrigerators without making a cash down payment.

So here is a 100th Anniversary Celebration 65 years too soon! It brings you — our good customers — an opportunity to buy your needs at deeply cut prices with savings you will long remember.

Sincerely,

B. E. Hambley

President and Chairman of the Board

